

VICTORIA. HAM'S QUEEN-ON-THRONE 1852-1854.

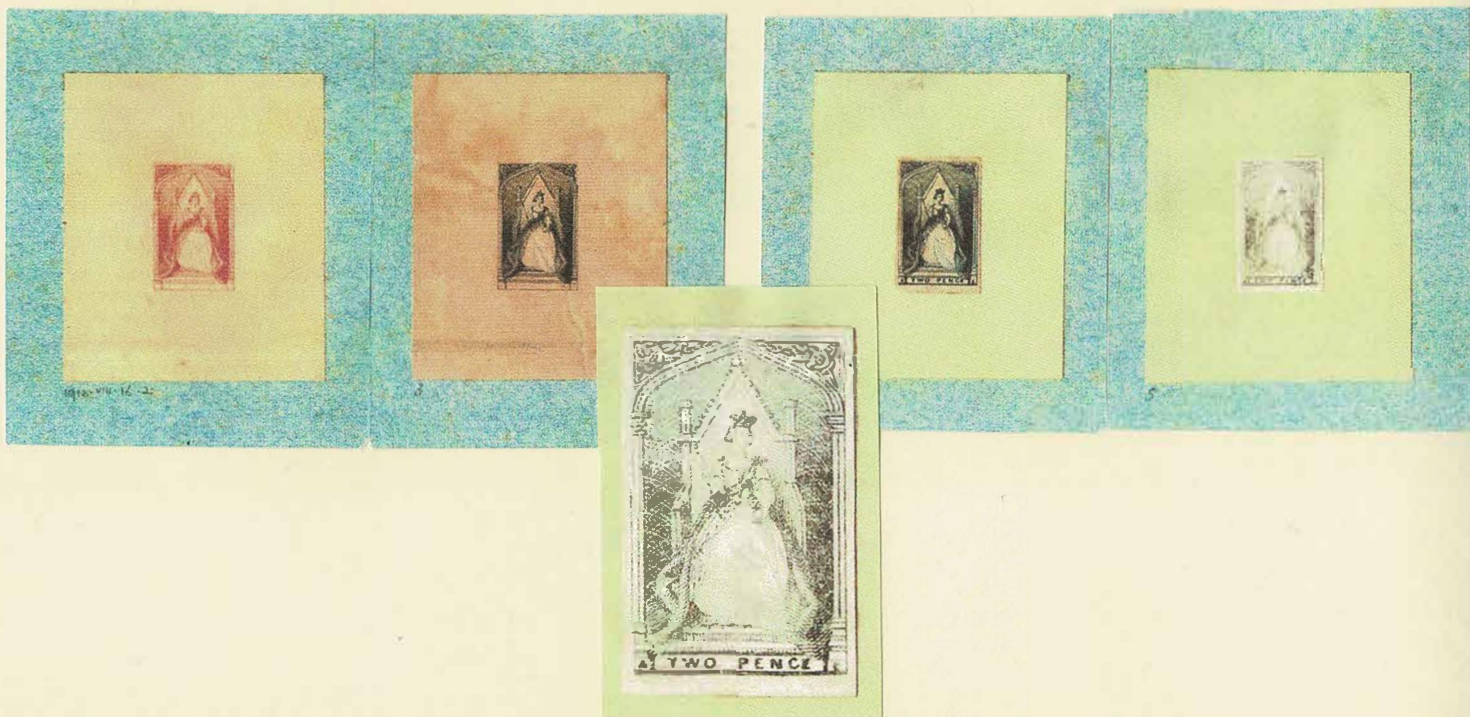
This exhibit shows the development of the Queen-on-Throne design by Perkins Bacon & Co. and how it became incorporated into the 1852 Victoria 2d stamp designed by William Strutt and printed by Thomas Ham of Melbourne, Victoria. It shows the stamps as issued including the shades, from the damaged plate and how they were used on posted items.

The Queen sitting on the Coronation Chair vignette is one of the few original artworks commissioned by Perkins Bacon & Co. from the distinguished artist Edward Henry Corbould.

William Strutt's original sketch book was purchased from the artist in London in 1907 at a cost of £120. On page 40 two items are missing, and their location was unknown. In one space a note reads "Two designs for postage stamps missing when I took over duty as Parliamentary Librarian in 1926. My predecessor Mr J A Finnie, informed me that they were missing when the volume was presented by the Hon. The Premier in 1909.

The Librarian – 22/10/35"

When researching the works of Strutt in 2013 the exhibitor found these missing items in the British Museum Prints and Drawings Collection. This find was subsequently presented in a paper published in the London Philatelist that year and then later in Philately from Australia.



The original artworks found by the exhibitor unrecognised in the British Museum Prints and Drawings Collection.

Plan of the study –

- The genesis by Perkins Bacon & Co. of the original artwork by Edward Henry Corbould,
- The history of the damaged Half-Length die-plate requiring a replacement die.
- The new design by William Strutt and use of the Perkins Bacon & Co. banknote vignette.
- Local proofs and printings by Thomas Ham in Melbourne. Earliest recorded use of the stamp.
- The printed shades, stamps from the rusted plate and the stamps as used for postage.

References – Percy de Worms - Perkins Bacon Records. J R W Purves – Original album pages and notes, G Kellow - The Stamps of Victoria, I P Greig - The 2d Queen-on-Throne stamps missing from the Victorian Parliamentary Library, G Kellow and J Shawley - The 2d Queen-on-Throne stamps of Victoria 1852-57. I P Greig - Postage Rates between Melbourne and Sydney from 1 February 1852 to 1 May 1854.

VICTORIA

HAM'S QUEEN-ON-THRONE, 1852-1854.

The design of the British Monarch sitting on the Coronation Chair had been used for many generations by Kings and Queens for their Great Seals of the Realm. Perkins Bacon & Co. produced a die of this design for use as a vignette in their security printings.

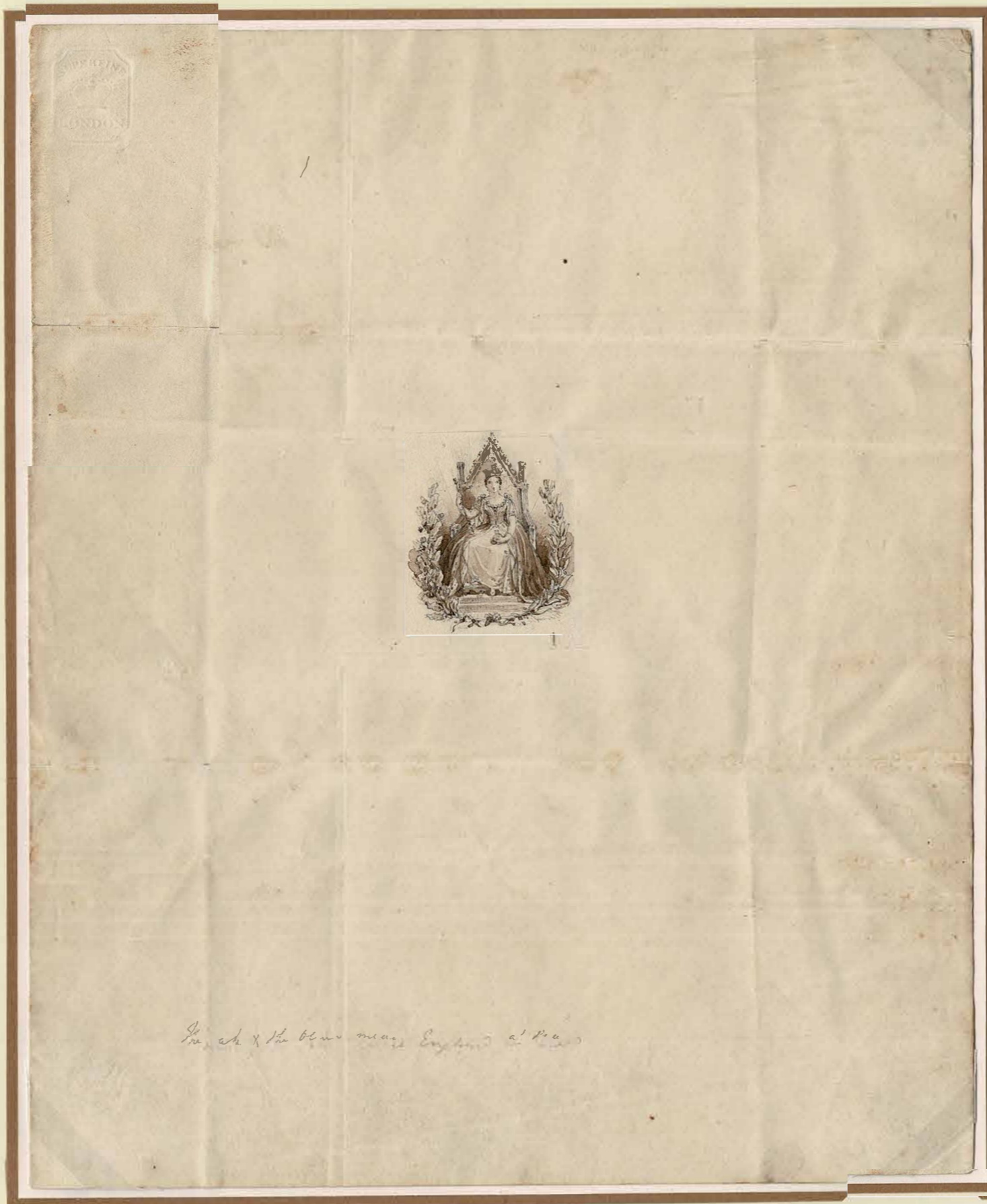


An early die proof with heavy radiating lines. This proof is on thin paper, with China white paint added. It is adhered over a proof of the Chalon Portrait vignette, which shadow can be detected displaced left of the former. (Ex. Perkins Bacon & Co. Archive)

The design is based on an artwork commissioned by Perkins Bacon & Co. from Edward Henry Corbould, a noted miniaturist and painter of the time.



As above but used as a progressive artwork and showing additional pencil lines reinforcing the lines around The Queen. (Ex. Perkins Bacon & Co. Archive)



VICTORIA

HAM'S QUEEN-ON-THRONE, 1852-1854.

Left - Original Edward Henry Corbould artwork in sepia wash and China white painted on superfine paper, wmk. J Thatman Turkey Mill 1837. The only original commissioned artwork in a private collection.

(Ex. Edward Corbould, Art Sale, July 1919, J Purves, R Perry and M Stanley)



The engraver's further attempt a radiating lines, showing the engraved version of the previous progressive artwork, this however provided an even less satisfactory result.

(Ex. Perkins Bacon & Co. Archive)

Perkins Bacon & Co. engravers had a further attempt at engraving the die but in a similar design to the earlier proof, this with light engraved lines achieves a much closer effect to the original artwork.



The adopted proof and copy from the Record Book showing reference numbering, "252" and "668".

(Ex. Perkins Bacon & Co, Archive and R Lee)

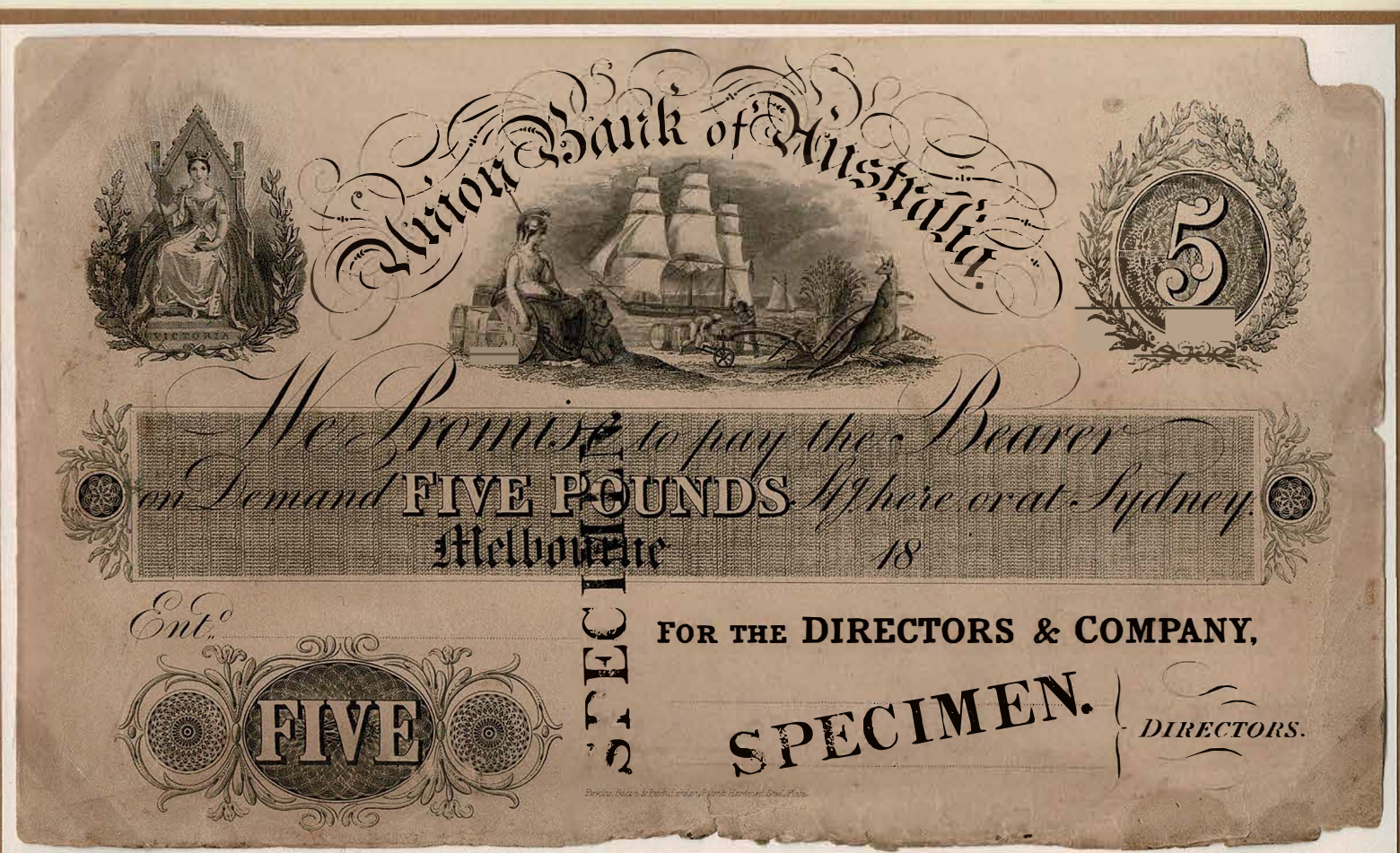
VICTORIA.

HAM'S QUEEN-ON-THRONE 1852-1854

The Union Bank of Australia, early in 1850 had ordered banknote plates from Perkins Bacon & Co. but the delivery was delayed.

A local printer, Thomas Ham was engaged to design and print temporary notes and although these were produced, they were not issued as the Perkins Bacon & Co. plates arrived 1851.

The banknote example shown is for use at the "MELBOURNE" branch. Records indicate only 18 copies of this banknote were printed. These notes were in circulation between 1851 to 1853.



The only recorded proof of the "Melbourne – Branch, Five Pounds, first issue, bank note for Union Bank of Australia. Printed in black ink on white unwatermarked paper, bonded to card and overprinted twice by SPECIMEN.

Although the "Queen on Coronation Chair" vignette was not used in the discarded Ham's banknote the stamp design they adopted clearly indicates W Strutt, Ham's designer had seen examples of Perkins Bacon & Co. banknotes. The new banknotes, likely to have been printed locally by Ham incorporated the vignette of the "Queen on Coronation Chair" incorrectly titled "Queen-on-Throne". This iconic vignette was incorporated by Strutt and Ham into the new "Queen-on-Throne" 2d stamp design, produced by them in December 1852 for Victoria.

VICTORIA.
HAM'S QUEEN-ON-THRONE 1852-1854

The original 1850 Ham Half-Length 2d design had been in circulation for two years. This value being the Internal Single Postage Rate for use within the colony, including New South Wales. The last printing of the Half-Length 2ds was from the eighth printing, the earliest known use from this printing is February 1850 and supplies of the 2d stamp are estimated to have been depleted the last week of 1852.

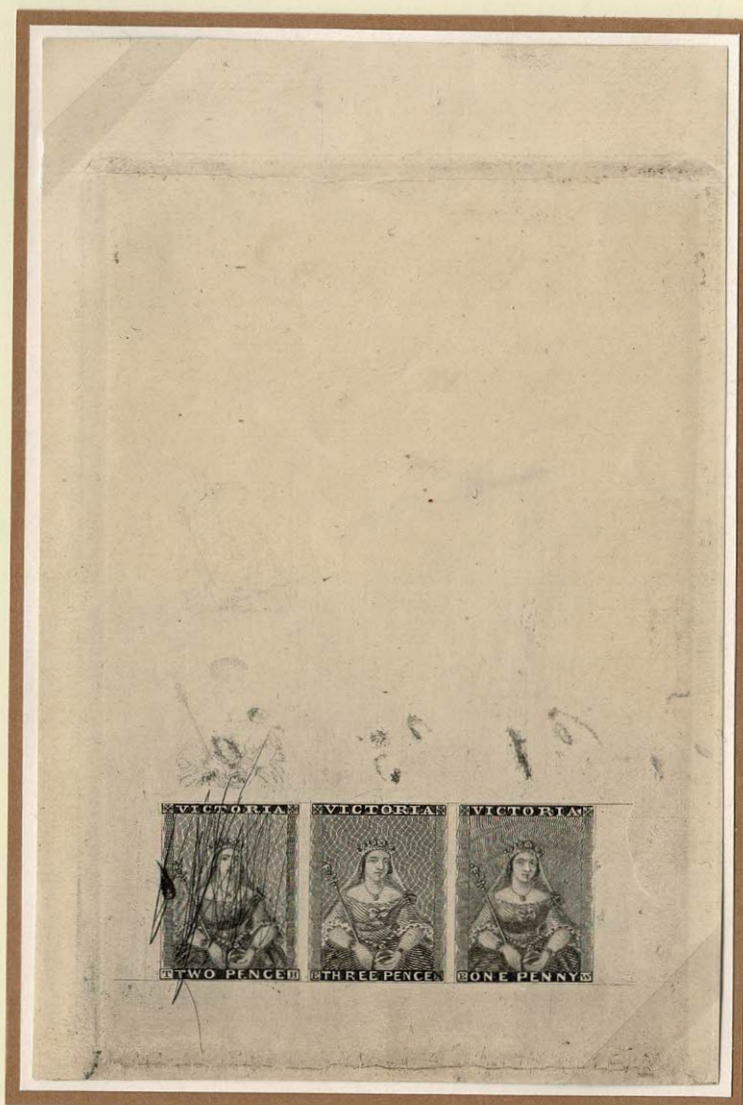


2d Cinnamon, 8th Printing, Stone C, on a 15 November 1852 cover from Geelong to Sydney.
2d internal postage rate included New South Wales until 1 May 1854.

The above cover dated 15 November 1852 is one of the last to use the original design 2d stamps and shows a clear printing as expected from the first sheets from the new stone and from the bottom of the printed pile of sheets of stamps as delivered to the Post Office.

VICTORIA.
HAM'S QUEEN-ON-THRONE 1852-1854.

As early as 1851 a supply of 2d stamps from a new engraved plate was considered but a tender for these was rejected and a further printing from the "existing plate" was called for. It seems however the 2d die was at that stage found to be damaged and so a new lithographic stone could not be produced.



Die-Plate Proof – Ham's Half-Length Design – (final state) showing the damage die. Pulled in 1901 for the Duke of York, later His Majesty King George V (four original copies recorded), Ex Pack and illustrated in his book, Purves, Diffen and illustrated in the Barwis and Moreton book.

In August with the die in an unusable state the previous tender was reconsidered, and a contract was entered into with Ham to produce a new engraved plate of fifty stamp impressions.

VICTORIA.
HAM'S QUEEN-ON-THRONE 1852-1854.

Thomas Ham employed an English artist who was residing in Melbourne called William Strutt to produce artworks for his projects. Four artwork proofs recently found by the exhibitor in the British Museum (Prints and Drawings Collection) are preliminary sketches for the design of this new 2d stamp and are clearly influenced by the bank note vignette.

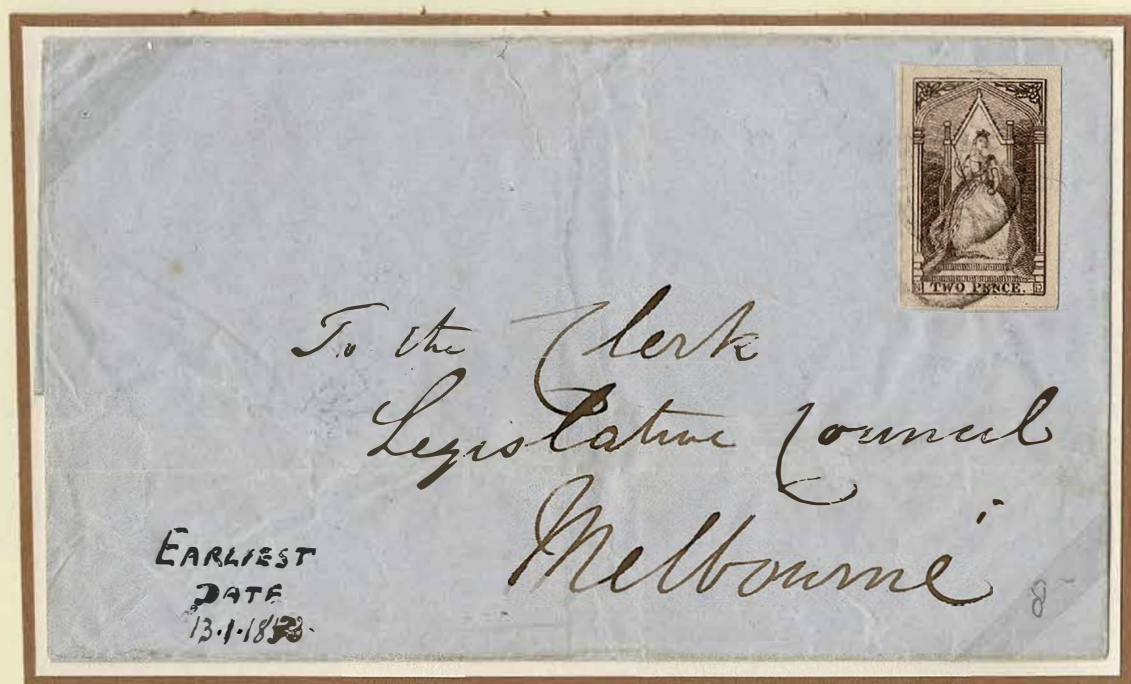


**Die-Plate Proof of 2d Queen-on-Throne with corner letters in warm reddish-brown, reconstructed block on toned card from third to fifth rows, right hand edge of sheet.
Ex Harvey and Perry**

The detail of the design achieved on the stamp plate however does not match the quality in Strutt's proofs making the design look almost "primitive" and illustrates the problem Ham had in transferring multiple detailed images required to produce a quality stamp plate. The method of transferring the individual images was with the use a dot matrix as can be seen on the incomplete designs on the earlier Half-Length plate.

VICTORIA.
HAM'S QUEEN-ON-THRONE 1852-1854.

The new stamps were printed in October and 10,000 sheets were delivered to Post Office on 18 November 1852. The Postmaster-General instructions were that all the existing stamps were to be issued before the new design was used. It is estimated the Queen-on-Throne design was made available in the last week of December 1852.



**2d Queen-on-Throne, earliest recorded use of stamp
sent from Portland to Melbourne, 8 January 1853.**

Note the manuscript date on the front is the Melbourne receiving date. Ex C L Pack.

The above cover dated 8 January 1853 from Portland to Melbourne is the earliest recorded cover with a Queen-on-Throne stamp. The Portland cancellers both on the back and front are in a dry ink. It was posted at Portland on a Saturday and took 4 days to reach Melbourne. The Pack manuscript note on the cover is the receiving date in Melbourne - confirmed on the back of the cover.

VICTORIA.

HAM'S QUEEN-ON-THRONE 1852-1854.

The Issued stamps – as the basic letter rate over the period of use was 2d the use of multiples was restricted and are abnormal.



a) Reddish-brown.



b) Purple-brown.

Horizontal strip of 5 and the largest vertical strip recorded both Ex Purvis)

Stamps used from the three crossing points to other Colonies - Swan Hill (unrecorded), Border Post and Maidens Punt.



c) Chestnut shades.

A small part of the printing, the deeper shades approach the Red-brown shade Deep Chestnut – Bright Chestnut (only recorded pair) – Pale Chestnut (dry ink)

VICTORIA.
HAM'S QUEEN-ON-THRONE 1852-1854.

The plate is of steel and is 12 by 9 inches and 1/12 inch thick.

The fifty individual images are hand engraved on the plate and took almost a year to complete.

The formation of the letters in the corners has been speculated for many years however two of the recently found Strutt proofs show the letters "A and E" added in pen to the bottom corners and it seems he selected this combination which was used on the first stamp and then it was worked along in alphabetical order, with a few letters missed out.

Although no official confirmation is known it is thought that the engravers were Ernest Wilkinson and Cyrus Mason.

The last image in the printed sheet has two apparently random letters of "W" and "M" which may confirm this.



Double Prints – so called Kiss Prints
Three examples recorded, one of these is in The Kings Collection.
Reddish-brown – position QV.
From the bottom row doubling of bottom of design only.



Double Prints – so called Kiss Prints
the second of the three examples recorded in private hands.
Purple-brown – position KP.
from the in fourth row doubling to full design
(Ex J R Purves)

Engraved on Steel by Thomas Ham. Melbourne.

A reconstruction of the stamps in Purple-brown from Ham's engraved plate with a reproduction of the imprint.
Only two letters from the original imprint from this printing are recorded but the same imprint is found on both the 1891 and 1901 reprint sheets.

VICTORIA.

HAM'S QUEEN-ON-THRONE 1852-1854.

Towards the end of Ham's contract, the printed stamps showed flaws caused by "rust" or corrosion on the plate. The shapes indicate that the catalyst for this damage were moist fibres left in contact with the plate. There are about 40 examples with these flaws recorded, 3 of the 4 pairs are show. Ham denied responsibility for the damage and claimed it took place after the plate had been handed back to the authorities at the end of his contract. These stamps disprove this and show the damage was extensive occurring over the whole plate.

Many of the positions shown are the only rust flaw examples record.



BF (2) – top row.



YC-XD (24-25), YC-XD-AF-BG (24,25,26 and 27) - third row.

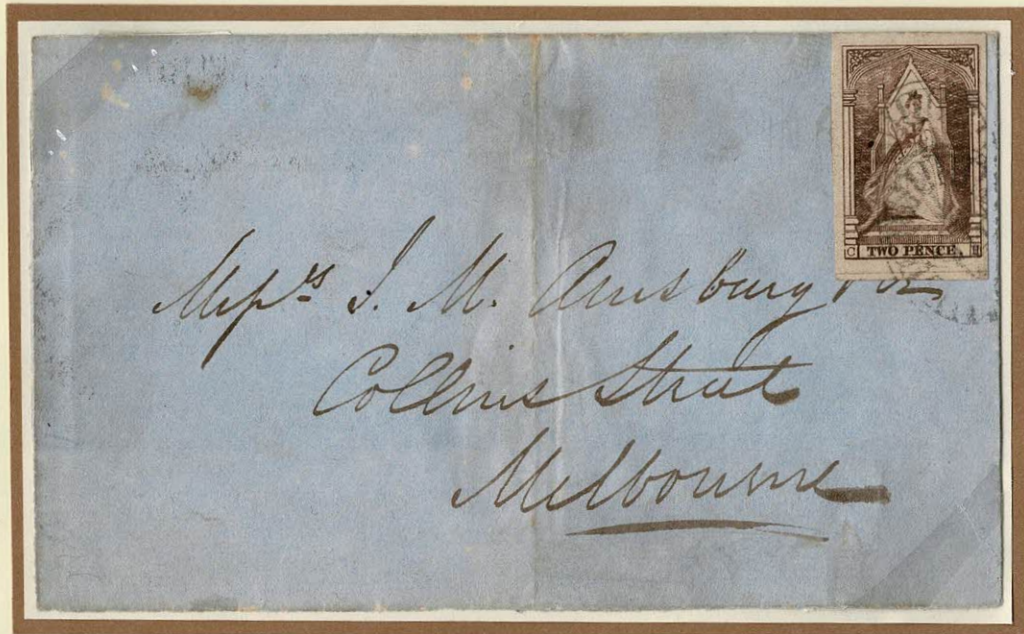


EK (30), GM-HN (32-33), HN-IO (33-34) and IO (34) – bottom row.



QV-RW (41-42), SX (43) and WZ (46).

VICTORIA.
HAM'S QUEEN-ON-THRONE 1852-1854.



2d Purple-brown on cover paying the up to ½ oz.
internal postage rate. Cover sent from Geelong to Melbourne.
Back GEELONG, MA 9, 1853, VICTORIA - MELBOURNE, MA 9, 1853, VICTORIA



2d Reddish-brown on cover paying the up to ½ oz.
inland postage rate. Cover sent from Port Fairly to Elyer
Back PORT FAIRLY, NO 22, 1853, VICTORIA - MUSTON'S CREEK, NO 22, 1853,
VICTORIA and FIERY CREEK, NO 27, 1853, VICTORIA.
The cover was held at Muston's Creek but not called for so was forwarded to Fiery Creek.

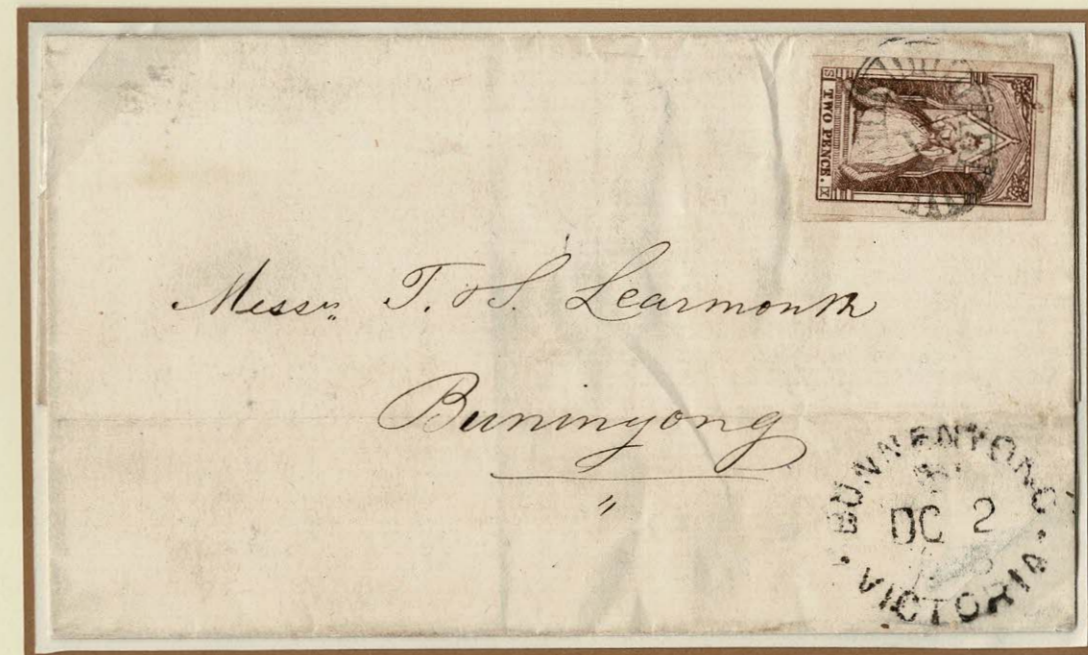
VICTORIA.
HAM'S QUEEN-ON-THRONE 1852-1854.



2d x 4 Chestnut on an OHMS cover paying the up to 2 oz. inland postage rate.
Cover sent from Barwon to Melbourne.
Back BARWON, AP 7, 1853, VICTORIA and MELBOURNE AP 7, 1853, VICTORIA.
(Largest multiple of Chestnut recorded and the J R Purves proving cover for Barwon).



2d Reddish-brown on cover paying the up to ½ oz. internal postage rate.
Cover sent from Melbourne to Gannawarra, Murray River
Back – no markings.



2d Reddish-brown on cover paying the up to ½ oz. internal postage rate.
Cover sent from Geelong to Buninyong
Back – GEELONG, DE 2, 1853, VICTORIA

VICTORIA.
HAM'S QUEEN-ON-THRONE 1852-1854.



2d Purple-brown paying the up to ½ oz. internal postage rate included New South Wales
Cover sent from Geelong to Sydney (New South Wales) via Melbourne.
Back GEELONG, OC 14, 1853, VICTORIA - MELBOURNE, OC 15, 1853, VICTORIA
and SHIP LETTER, OC --, 1853, SYDNEY.



2d Purple-brown and 3d Blue Half-length paying the up to ½ oz.
2d inland and 3d ship letter rate, 4d by sea in manuscript, unpaid.
Cover sent from Geelong to Hobartone (Van Dieman's Land) via Melbourne.
Back GEELONG, FE 28, 1853, VICTORIA - MELBOURNE, FE 28, 1853, VICTORIA
and SHIP LETTER, MA 8, 1853 (of Van Diemen's Land).