



Philately *from* Australia

Journal of the ROYAL PHILATELIC SOCIETY of VICTORIA Inc

130th Anniversary Celebrations



Surface Mail to Foreign Countries

The 1957 Christmas Issues





QUALITY AND SERVICE REBORN

Some items in our Feb 2023 Auction

Featuring Tim Morgan's stunning Canada 1928-29 Scrolls Collection



Imperf Between vertically - 5 sheets printed



'Man in the Mast' Imperf pair - 2 recorded



Plate Proof - Horizontal ribbed paper



Imperf Booklet Plate
5 sheets printed



Plate Number Block on FDC



Imperf between horizontally
5 sheets printed

PhoenixAuctions.com.au





Autumn General Auction Series

Geneva - December 5th-9th, 2022



David Feldman
International Auctioneers

Tel +41 22 727 07 77

info@davidfeldman.com
davidfeldman.com



- The "Art of Sperati" Collection
- The Hausman Collection of All World
- Indian States: Bundi
- Egypt - Part VII of the Joe Chalhoub Collection
- The "Bicentenário" Collection of the Dom Pedro Issues of Brazil
- The Eduardo Borberg Collection of Venezuelan Maritime Mail
- France and Colonies
- Great Britain and British Empire
- All World and Collections



Contents

Editorial	91
A Word from Your President	92
Honours Announced for Society Members: <i>John Shawley & Ted Gallagher</i>	92
Royal Philatelic Society of Victoria: 130 Years: <i>Richard Breckon</i>	93
Vale: Timothy Morgan FRPSV & Paul Peggie <i>Richard Breckon & Sean Burke</i>	94
Australia's Letter & Postcard Surface Rates of Postage to Foreign (non-British Empire) Countries, 1901-1971: <i>Richard Breckon</i>	95
A Study of the 1957 Christmas Issues: <i>Ted Gallagher</i>	98
A Previously Unrecorded Privately-Printed Newspaper Wrapper of Victoria: <i>Ian P. Greig</i>	101
'A Few of My Favourite Things', Number Thirteen: A Common Item in Uncommon Circumstances: <i>Gary Watson</i>	104
Early Registration Labels in Australia: - Western Australia, Part 1: The Experimental Labels: <i>Kevin J. Burt</i>	106
The Perf. 12 - 2d Naish Design Stamps of the 1880-1884 Period of Victoria: <i>Ian P. Greig</i>	108
Exhibition Awards for Society Members	109
Back Then: "Tea Wagon" at Melbourne Mail Exchange, circa 1950	111
100 Years & 50 Years Ago	111
Royal News & Society Syllabus	112

The Royal Philatelic Society of Victoria Inc. is not responsible for opinions expressed by contributors in this journal, nor do the views of contributors necessarily reflect the policy of the Society or the members of its Council. Every reasonable effort is made to check the accuracy of information published in the journal, but the Society cannot be held responsible for any inaccuracies or for any consequences arising from the publication of inaccurate information. Acceptance of an advertisement does not necessarily mean endorsement of the product or service. The Society has the right to refuse any advertisement without giving a reason.

EDITORIAL

Welcome to the final edition of the journal for 2022 as many of us try to ignore Covid despite its continuing presence. We have much good news to report this time with an account of the Society's 130th anniversary celebrations in August, two new Fellows being announced at the recent Annual General Meeting and further awards at national and international exhibitions. Unfortunately, this is tempered by the recent passing of one of our 50-Year members, Timothy Morgan and long-term member Paul Peggie (see *Vale* p. 94).

Richard Breckon has been busy continuing his research on Australian Post Office services, this time turning his attention to Surface postage rates for letters and postcards to foreign countries during the period 1901-1971. This area is complicated by exceptions made for some non-British Commonwealth countries, before a geographical classification of countries was introduced in 1971. As usual, the article is capped off with one of Richard's detailed postage rates tables.

With Christmas fast approaching, Ted Gallagher presents a timely study of the 1957 Christmas issues. He follows the process from the public invitation to submit designs in April 1956 to the eventual decision to use an earlier design by Donald Cameron of the Note Printing Branch as the basis. The production entailed the cutting of two separate dies which have minor differences; few varieties have been recorded.

In "My Favourite Things" No 13, Gary Watson takes us a relatively short sea/train journey from Sydney to St Louis, Missouri via San Francisco on the Oceanic Line's *Sonoma*. The 1902 cover addressed to the Louisiana Purchase Exposition establishes a link between Australia's only trans-Pacific postal service of the time and the approaching St Louis World's Fair of 1904, an event that attracted almost 20 million people.

In this edition, Kevin Burt has headed way out west with the first part of a three-part article on the Registration Labels of Western Australia. These labels are seen as the most challenging of all the states with some 39 basic types. Western Australia went its own way as far as label size and sheet format were concerned. As always, the article features a number of special early covers.

We are fortunate to have another two brief items from Ian Greig. The first explains how to identify the elusive Perf. 12 Naish design 2d brown and mauve stamp of 1880-1884. The second describes a previously unrecorded privately-printed newspaper wrapper of Victoria.

Finally, we publish the reports presented at the 130th Annual General Meeting held on 15 September. Particularly for those unable to attend, this is your opportunity to review in detail the Society's activities in what was another challenging year where operations were still partially impacted by the pandemic.

Royal Philatelic Society of Victoria Inc.

Purves House
303 High Street
ASHBURTON VIC 3147

General correspondence:

Royal Philatelic Society of Victoria Inc.
PO Box 490
ASHBURTON VIC 3147, Australia
TEL: (03) 9885 1483 (answering service)

Business Manager (sale of publications):

Peter Leitch
C/o Royal Philatelic Society of Victoria Inc.
PO Box 490
ASHBURTON VIC 3147, Australia
Email: pleitch@inet.net.au
TEL: (03) 9571 3686

Philately from Australia Committee:

Eric Frazer (Editor)
Richard Breckon (Assistant Editor)
Bill Lloyd-Smith (Assistant Editor)
Gary Diffen (Advertising Manager)

Editorial contributions:

Articles on any subjects of philatelic interest are welcome from contributors, whether or not they are RPSV members. Articles should be submitted as plain text in the body of an email or as an attachment in Word or Rich Text format. Please include a list of references or bibliography, as appropriate. Images should be supplied separately at 300 DPI or higher; quote source/permission for non-author images.

All contributions will be reviewed by the editorial team. Articles exceeding 3,000 words may have to be divided into instalments appearing in various editions of the journal.

Note that *Philately from Australia* does not normally reprint articles that have been published elsewhere.

Editorial submissions to: Eric Frazer
Email: eric.frazer@internode.on.net
Tel: 0412 489 958

Advertising submissions to: Gary Diffen
Email: garydiffen@gmail.com
Tel: (03) 9510 3291

Closing dates for submissions:

March 2023 Pfa:

Editorial: 6 January 2023
Advertising: 13 January 2023

June 2023 Pfa:

Editorial: 7 April 2023
Advertising: 14 April 2023

Designed by **A DESIGN** design@adesign.net.au,
M: 0425 825 145, Geelong, VIC

Printed by **PRINTGRAPHICS**,
Mount Waverley, VIC

www.rpsv.org.au



Journal of the
**ROYAL PHILATELIC
SOCIETY of VICTORIA Inc**



A Word from Your President

Hope everyone is keeping warm. As I write this column, it is 12°C in Melbourne, raining and there are major floods in Victoria, New South Wales and Queensland. Our thoughts are with all those who are affected by the floods.

On 15 September, we had our Annual General Meeting. The Council has remained unchanged and I am looking

forward to working with all Council members for another twelve months. At the AGM, Allen Shatten and Graeme Plaw were made Fellows of the Society. Congratulations to both on an award well deserved as they have devoted a lot of time to the Society.

I will be travelling to Wellington, New Zealand on 9 November for the WPS100 Stamp Show. The Australasian Challenge will be held there and I will taking the Victorian entries. Victoria is the reigning holder of the trophy so let us hope we can bring it back to Victoria.

On 2 September, we had Roger Elliott from the United Kingdom give, via Zoom, what I think was the best WW1 POW Internment Mail display I have ever seen. There was some remarkable and scarce material shown. For those who could not join us for the

Zoom presentation, it can be viewed via our website as can all the Zoom presentations that have been given during the year. The website is being improved by Allen Shatten all the time and I encourage members to visit it. All editions of *Philately from Australia* can be viewed and searched, and we have some remarkable exhibits that can be viewed.

I would like to remind members that the Hobart 2023 One Frame Exhibition will be held at the Hobart Town Hall during 19-21 May 2023 and the closing date for entries is 23 March 2023. More information can be found on the exhibition website <https://hobartstampshow2023.com>. Recent changes to One Frame Guidelines have removed some previous restrictions on what can be shown and made the class more approachable for new exhibitors. The One Frame Class is a good starting point for new exhibitors as not too much material is needed to make a 16-page exhibit. However, getting the narrow scope right can be tricky. The exhibition has provided some basic information on the class <https://hobartstampshow2023.com/about/>. The Royal Philatelic Society of Victoria is also having a joint meeting with the Tasmanian Philatelic Society on Thursday 18 May.

Finally, on behalf of the Council, I would like to wish all members a very Merry Christmas and a happy and healthy New Year.

Frank Pauer
LMRPSV, FRPSL

Honours Announced for Society Members

Congratulations are due to our two new Fellows (FRPSV), Graeme Plaw and Allen Shatten. These awards were announced at the Society's Annual General Meeting on 15 September 2022 after approval by Council.

Graeme Plaw FRPSV

Active participants are the life blood of any group. It is amazing that Graeme manages to be such an active member of the RPSV despite his deep involvement in Hand Tool collecting along with membership of Jaycees and Rotary. But participate in philately he does and he is a regular and active member in Day and Postal History meetings. In addition, he has been on the Publications Committee since 2010 and, most recently, was a keen proof-reader of our latest 500-page publication. Such devotion!

Graeme's interest in Philately commenced with being a Junior member of the Balwyn Philatelic Society, well before joining the RPSV in 2005. His current philatelic interests focus on Australian KGV and KGVII stamps, including on cover. His contributions to meetings are always well researched and presented and he readily shares his knowledge. Graeme well deserves recognition as a Fellow of our Society.

John Shawley LMRPSV, FRPSL

Allen Shatten FRPSV

Amongst other things, Allen is an accomplished collector of Tasmanian postal stationery. He is the co-author of *Tasmanian Postal Stationery* with Malcolm Groom RDP. He is also a regular contributor to *The Courier*, the Tasmanian Philatelic Society's journal.

He joined the Royal in 2014 and, since joining Council, Allen has spent many hours on the Royal's IT applications. This includes the installation and implementation of a new Library catalogue, design and installation of a new website and streamlining the Expert Committee's administration. A special feature of Allen's work on the website is the recent addition of archived copies of *Philately from Australia* since 1949, which can be read online or downloaded as a PDF.

Ted Gallagher FRPSV



Image courtesy Frank Pauer

Royal Philatelic Society of Victoria: 130 Years

Richard Breckon APR, FRPSV

The RPSV celebrated its 130th anniversary at the Society's daytime and evening meetings during August. A cake featuring commemorative inscriptions was produced for each meeting, the cake decoration being the work of Karen Pauer.

The (Royal) Philatelic Society of Victoria was established in Melbourne on 10 August 1892. It is not the oldest in Australasia – the Philatelic Society of South Australia (1888), the Royal Philatelic Society of New Zealand (1888) and the Royal Sydney Philatelic Club (1890) are older, but we are arguably Australia's leading philatelic society. Notably, the RPSV was the first philatelic society in Australia to acquire its own premises at 6 Avoca Street, South Yarra, 65 years ago.

It was "third time lucky" when the Philatelic Society of Victoria was born in 1892. Two earlier attempts to establish a Melbourne-based philatelic society were made in 1887 and 1890, but both efforts withered after a few months. The first gathering of the successful society was over dinner at the Vienna Café in Collins Street, Melbourne, on 7 July 1892, where the new society's formation was discussed by a group of local philatelists. The formal establishment of the Society occurred at a meeting in an

office building at the corner of Queen and Collins streets on 10 August 1892. Rules had been drafted which, after debate and some amendments, were adopted. Three office bearers were appointed to serve as President, Vice President and Secretary/Treasurer, along with three committee members.

The philatelists and dealers who joined the new Society included Charles Hesselmann, an importer whose Queen Street office was used for the inaugural meeting; David Hill, a Treasury official, who published the earliest archival research on Victoria's stamps, stationery and postal history; Walter Brettschneider, a sign writer and part-time stamp dealer; F.R. Godfrey, a grazier and company director; Charles Donne, a retailer of books and maps and a part-time stamp dealer; William Rundell, head of the Post Office Records branch, who sourced much information of philatelic interest (now held in the Royal's library); Maximilian Tannenberg, a lithographic artist who was successful in several stamp design competitions; and William Ackland, who acquired Melbourne's earliest dedicated stamp shop a couple of years after it first opened in 1890.



Max Stern & Co.
has a new address
on the web!
www.maxstern.com.au

**Australasia's most comprehensive
'new issues' list released monthly!**

All new issues are listed alphabetically by country from A-Z. Hundreds of issues arriving weekly including special products, thematics, souvenir sheets and more!

We also act as agents for over 26 Philatelic Bureaus including Canada, China, Great Britain and Islands, Hong Kong, Ireland, Israel, Macau, New Zealand, Sweden and many more.

Australian, A.A.T., Christmas Islands, Cocos Keeling islands, Nauru, Norfolk Island, P.N.G., Pitcairn Island and Great Britain are also fully listed together with SPECIAL SAVINGS on Collections.

Max Stern & Co.
271 Collins Street, Melbourne
(G.P.O. Box 997, Melbourne, Victoria, Australia 3001)
Phone +61 3 9654 6751 Fax +61 3 9650 7192
Email maxstern@maxstern.com.au
<http://www.maxstern.com.au>



STAMP NEWS

STAMP NEWS is an informative monthly magazine for philatelists with news stories from around Australia, New Zealand, the South Pacific and the rest of the world. Each issue runs to at least 90 pages with special features on Australian Commonwealth Philately, Postal Stationery, Investments, Cinderellas, Postcards, Collectibles and much more. Brought to you by our worldwide network of informed contributors and correspondents.

For a free sample copy of STAMP NEWS without obligation, write to us advising that you are a reader of *Philately from Australia*

STAMP NEWS P.O. Box 1290, UPWEY, VIC,
3158 Australia

Vale: Timothy Morgan FRPSV & Paul Peggie



Image courtesy Morgan family

Timothy Morgan FRPSV

Our 50-Year member, Tim Morgan, died in Melbourne on 20 July 2022, at the age of 82, following a lengthy illness. Tim was universally regarded as a “character” and his presence at Royal meetings involved plenty of friendly banter and conversation. His philatelic interests centred on Canada, particularly the “Large” and “Small” Queen’s Head stamps of the Nineteenth Century Dominion era. Tim joined the RPSV in 1970. His contributions to the Society – including service as the Exchange Superintendent (1972-82) – were recognised at the delayed 50-Year Members’ Lunch held on 4 April this year. Unfortunately, Tim’s health situation prevented his attendance at the function. In his professional life, Tim worked for Victoria’s Gas and Fuel Corporation. About 10 years ago, Tim donated the cost of installing the multi-frame wall unit at Purves House for the use of our displays at evening and daytime meetings – a typical example of his generosity.

Richard Breckon APR, FRPSV

Paul Peggie

It is with great sadness that we record the passing of RPSV member, Paul Peggie. He died on 10 October 2022, after complications associated with MND. Paul joined the Royal in 1992 and, although he came to few meetings, he did occasionally present at our meetings. A grape grower from the Yarra Valley, Victoria, Paul was a fine philatelist with a wide-ranging collection, including stamps and postmarks of the Australian States. His passion, however, was for the stamps and postal history of Rhodesia and Nyasaland, especially the early years – the British South Africa Company period. Paul co-authored two books on the postal history of the Paris Missionary Society in Barotseland (North-West Zambia) and wrote numerous articles on the subject in the *Journal of the Rhodesian Study Circle*. Paul exhibited at International exhibitions in Melbourne and New York and was elected as a Fellow of the Rhodesian Study Circle. To his wife, Karen, his sons, Andrew and Michael, and all the family, go our condolences. May his gentle soul rest in peace.

Sean Burke FRPSL



Paul Peggie on the left at Rhodesian Study Circle post-meeting lunch with friends (left to right): Ronnie Winchester, John Shawley, Ken Scudder, the late Don Napier, Justin Corfield, Richard Breckon and Adam Goulding.

Australia's Letter & Postcard Surface Rates of Postage to Foreign (non-British Empire) Countries, 1901-1971

Richard Breckon APR, FRPSV



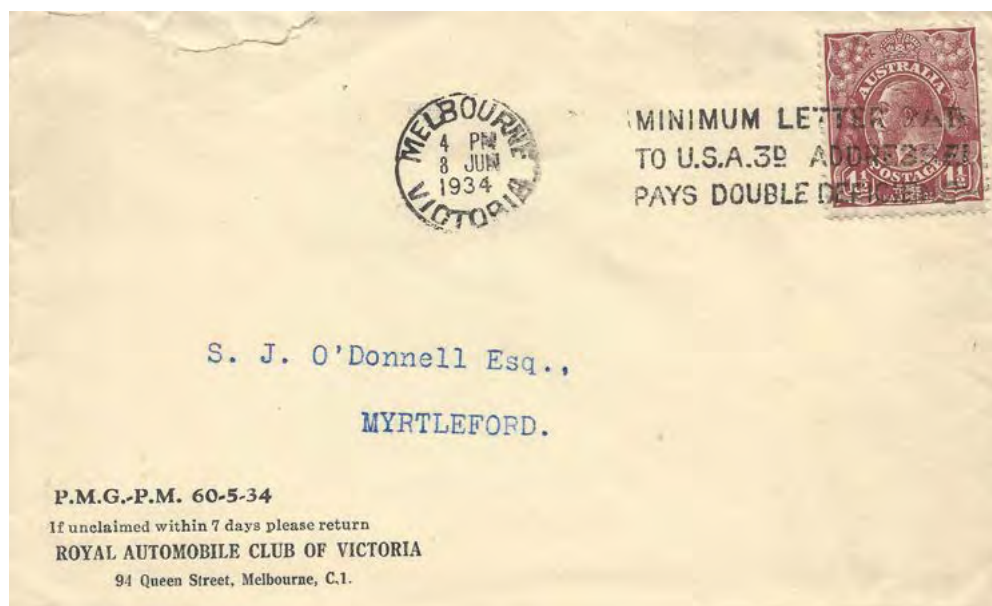
1931 Richmond, Vic., to United States featuring "Returned for additional postage" handstamp. When originally posted on 30 June 1931, the article featured 2 x 2d stamps, which was underpaid for a double-weight letter to a foreign country – 3d up to one ounce and 2d for each additional ounce. The local post office contacted the sender and the missing 1d stamp was added and postmarked the following day, 1 July.

Interestingly, certain countries outside the British Empire were accorded lower rates of postage.

At Federation, rates of postage to overseas countries were the same for British Empire and for foreign countries, these being the rates specified by the Universal Postal Union for letters and postcards transmitted in the international mail system. The UPU rate for letters was 25 centimes per 10 grams, which was converted by Australia to 2½d per half ounce. The UPU postcard rate was 10 centimes, but Australia converted this to a higher amount of 1½d, which was permitted for countries carrying the bulk of their overseas mail by ship over long distances.

Initially, Australia did not join the

For many decades, Australia's rates of *surface* postage to overseas countries were different for British Empire and for foreign countries, with postage to British Empire countries being at domestic rates of postage and postage to foreign countries at higher rates. The extension of domestic rates to British Empire countries – the terminology changed to "British Commonwealth" in 1958 – followed the introduction of Penny Postage within Australia and to the British Empire in 1911. This article discusses the rates of surface postage for letters and postcards to non-British Empire countries.



1934 Melbourne to Myrtleford, Vic., featuring the slogan postmark "MINIMUM LETTER RATE TO U.S.A. 3D ADDRESSEE PAYS DOUBLE DEFICIENCY", indicating the frequency of underpaid mail to the United States and the necessity to remind the public of the correct postage.

Imperial Penny Postage scheme introduced by the United Kingdom in December 1898 for letters between British Empire countries. For the most part, Australia's domestic letter rates were 2d, so that a reduction to 1d for empire and domestic letters would have involved a significant loss of revenue. Letter postage from Australia to most empire countries was reduced to 2d in 1905-07 as an interim measure. A full reduction to 1d postage to all empire countries was adopted by Australia in 1911, together with a reduction to uniform domestic postage of 1d.

Commencing in 1911, Australia's overseas surface mail involved different rates of postage for British Empire and for foreign countries. A half-ounce letter from Australia to an empire country cost 1d, but a similar letter to a foreign

to foreign country postage in May 1962.

A year before the distinction between British Commonwealth and foreign countries was removed, an interim classification involved various foreign countries in Asia and Oceania being accorded the lower postage applying to British Commonwealth countries. On 1 October 1970, overseas countries were divided into two zones:

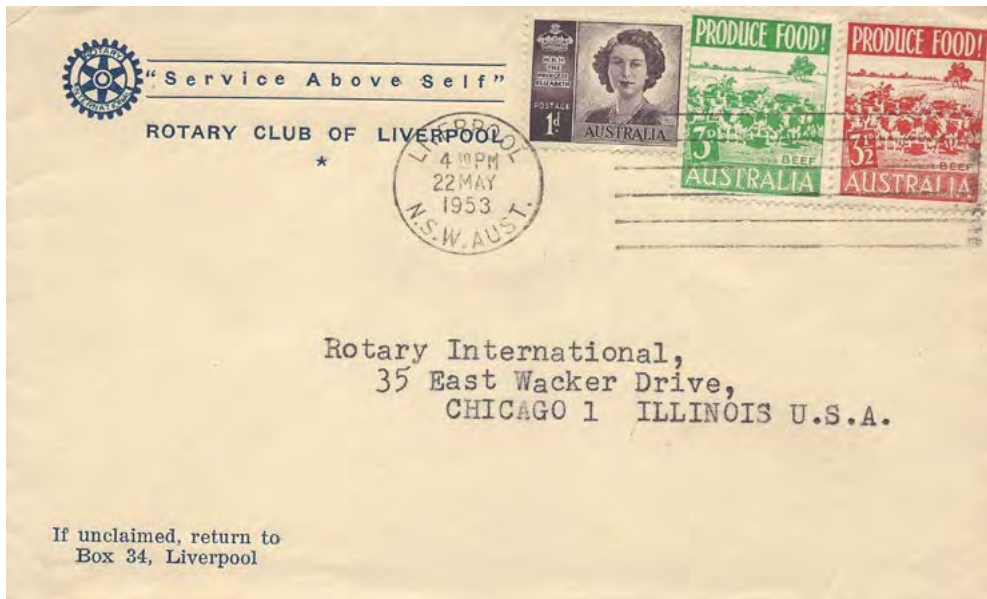
- All British Commonwealth countries in the world and selected foreign countries in Asia-Oceania;
- All other foreign countries.

Foreign countries in Asia-Oceania that were now grouped with the British Commonwealth for the purpose of lower postage comprised:

- *Asia:* Bhutan, Burma, Cambodia, Indonesia, Japan, Korea (South), Laos, Macau, Maldives, Nepal, Philippines, Portuguese Timor, Ryukyu Islands, South Yemen, Taiwan, Thailand, Vietnam (South).
- *Oceania:* Caroline & Marshall Islands, French Polynesia, Mariana Islands, New Caledonia, US territories in the Pacific.

On 1 October 1971, all overseas countries, irrespective of their status as members or non-members of the British Commonwealth, were divided into "Asia-Oceania" or "All Other Countries" for the purpose of applying overseas surface rates of postage. The

historic distinction between British Commonwealth and foreign countries had been replaced by a geographical classification of countries.



1953 Liverpool, NSW, to United States bearing 7½d postage up to one ounce to foreign countries.

country was 2½d, regardless of geographical location. For example, a letter could be sent to Canada for 1d, but to the United States it was 2½d.

Ireland was an exception to the empire/foreign division of the world. After Ireland became a republic on 18 April 1949 and leaving the British Commonwealth, Ireland was *not* treated as a foreign country by the United Kingdom, as well as by Australia. Ireland continued to enjoy Australia's British Commonwealth rates of postage until 1971. Although not a British Commonwealth country, Egypt was classified as such until about 1953 when foreign country postage applied. South Africa's departure from commonwealth membership followed the country becoming a republic in 1961; this led to the transfer of South Africa



1958 Hobart to United States, a postcard bearing 4½d postage to foreign countries. Note the use of the boxed area of the machine postmark for the purpose of cancelling a mass mailing of advertising to a global list of addressees.

Australia's Letter & Postcard Surface Rates of Postage to Foreign (non-British Empire) Countries, 1901-1971

One ounce (1oz) = 28g; one pound (1lb = 16oz) = 454g

1 Mar 1901 – 27 Oct 1918:
Letters 2½d per ½oz; postcards 1½d (1 May 1912 to 27 Oct 1918: postcards to USA 1d)
28 Oct 1918 – 30 Sep 1920:
Letters 2½d per ½oz + ½d war postage; postcards 1½d (no ½d war postage)
1 Oct 1920 – 31 Dec 1921:
Letters 3d per ½oz; postcards 1½d
1 Jan 1922 – 30 Sep 1923:
Letters 4d up to 1oz, 2d each additional 1oz; postcards 2d
1 Oct 1923 – 3 Aug 1930:
Letters 3d up to 1oz, 1½d each additional 1oz; postcards 1½d
4 Aug 1930 – 9 Dec 1941:
Letters 3d up to 1oz, 2d each additional 1oz; postcards 2d
10 Dec 1941 – 30 Jun 1949:
Letters 3d up to 1oz, 2d each additional 1oz + ½d war postage; postcards 2d + ½d war postage
1 Jul 1949 – 30 Nov 1950:
Letters 3½d up to 1oz, 2d each additional 1oz; postcards 2d
1 Dec 1950 – 8 Jul 1951:
Letters 5½d up to 1oz, 2½d each additional 1oz; postcards 3d
9 Jul 1951 – 30 Sep 1959:
Letters 7½d up to 1oz, 4½d each additional 1oz; postcards 4½d
1 Oct 1959 – 13 Feb 1966:
Letters 8d up to 1oz, 5d each additional 1oz; postcards 8d
14 Feb 1966 – 30 Sep 1970:
Letters 7c up to 1oz, 4c each additional 1oz; postcards 7c
1 Oct 1970 – 30 Sep 1971:
<i>Asia-Oceania foreign countries:</i> Letters & postcards 7c up to 1oz, 13c 1-2oz, 20c 2-4oz, 40c 4-8oz, 70c 8-16oz, \$1.20 1-2lb, \$1.90 2-4lb (max.)
<i>Other foreign countries:</i> Letters & postcards 9c up to 1oz, 16c 1-2oz, 25c 2-4oz, 50c 4-8oz, 90c 8-16oz, \$1.50 1-2lb, \$2.40 2-4lb (max.)
1 Oct 1971:
Postage rates to foreign countries merged with those to British Commonwealth countries

Sources:

Postmaster-General's Department, *Post Office Guide*, various editions up to 1969

Australian Post Office, *Postal Charges* (booklets), various editions 1966-71

Hobart Stamp Show 2023

19 – 21 May 2023

National One Frame Exhibition

ENTRIES NOW OPEN



The Hobart Stamp Show 2023 is conducted under the auspices of the Australian Philatelic Federation and organised by the Tasmanian Philatelic Society.

Where: Hobart Town Hall, Macquarie St, Hobart

When: 12:00 Friday 19th May – 3:30 pm Sunday 21 May

Entries Close: Mon 27 Feb 2023

Website: <https://hobartstampshow2023.com>

A Study of the 1957 Christmas Issues

Ted Gallagher FRPSV

BACKGROUND

Although a few countries had, on occasions, issued stamps that featured Christmas themes, in 1957 Australia became the first country in the world to commence annual issues of Christmas stamps. The idea of issuing a Christmas commemorative stamp evolved from earlier proposals from prominent churchmen, and others, to issue stamps with a spiritual significance. One of the most active advocates was the Reverend A. Wright, Superintendent Minister for the Elizabeth Circuit Mission of the Methodist Church in Adelaide. Others included His Eminence, Cardinal Gilroy of Sydney, the Australian Council for the World Council of Churches and the Cairns Chamber of Commerce.



A new policy for stamp design and production was evolved in late 1955 and announced by the Postmaster-General, the Honourable C.W. Davidson MP, in March 1956. This included the possibility of issuing stamps in 1957 illustrative of the spiritual significance of Christmas. The policy was included in the April 1956 issue of the Australian Post Office *Philatelic Bulletin* and invited the public to submit designs. The Australia Post Archives does not hold any designs submitted by the public. However, it does hold artwork prepared by the Note Printing Branch (NPB), (Figures 1-3 are examples), and by A. J. Shackel of the Postmaster-General's Department (Figure 4). In August 1956, the Stamp Advisory Committee reviewed all the submitted designs and concluded that none were felt to adequately convey the theme of the spiritual significance of Christmas.



Figure 1



Figure 2



Figure 3



Figure 4

SELECTION OF THE DESIGN

The Committee decided that the theme might best be conveyed by the reproduction of an appropriate work of art. A meeting in January 1957 with Dr Ursula Hoff of the National Gallery of Victoria led to a selection of eight works for consideration. The following month, the NPB prepared two designs based on:

- Sandro Botticelli's *The Mystic Nativity*, 1501, National Gallery, London, (Figure 5), and
- Hans Memling's *The Adoration of the Magi*, 1479, Trittico di Santa Columba, Monaco (Figure 6).



Figure 5



Figure 6

However, these designs were found to be too detailed for stamp production. An earlier design by Donald Cameron of the NPB (Figure 8), based on Sir Joshua Reynolds' *The Infant Samuel*, c 1776, National Gallery, London (Figure 7) was reconsidered. The NPB was asked to modify the design to horizontal format, to add the Star of Bethlehem and to show a denomination of "4d". Additionally, three inscriptions "CHRISTMAS 1957", "FAITH" and "FAITH AND BELIEF" were to be made as masks so as to gauge their affect.



Figure 7



Figure 8

DESIGN DEVELOPMENT

The NPB responded towards the end of May with the modified designs requested (Figures 9-11), together with a design based on Bertel Thorwaldsen's sculpture *Christ the Compassionate*, c1839, Vor Frue Kirke, Copenhagen (Figure 12), and another showing the Madonna and Child in outline before a window framing the Star of Bethlehem (Figure 13).

The Stamp Advisory Committee approved Figure 11. This was shown to church leaders in early July. As there were no objections, management endorsed approval of the design.



Figure 9



Figure 10



Figure 11



Figure 12



Figure 13

PRODUCTION

It had been decided that two denominations were required: 4d, being the letter rate within Australia and the British Empire, and 3½d, being the second class mail rate, which included greeting cards. Together, the two denominations added up to the surface mail postage rate to foreign countries.

In mid-July, the NPB was asked to cut dies for the two denominations. Donald Cameron prepared a key line drawing (Figure 14) and then engraved two dies. It is interesting to note that two separate dies were engraved, rather than one derived from the other. They are remarkably similar. However, there are minor differences, for example above the cross bar of the “H” of “CHRISTMAS” and Samuel’s upper lip. Refer to Figures 15 and 16. Two die proofs, in red and purple, of the 4d design were provided by the NPB (Figure 17 and 18) and were approved on 5 August 1957 for colour and for the 4d engraving. The engraving of the 3½d die (Figure 19) was approved the following week on 14 August 1957.



Figure 14

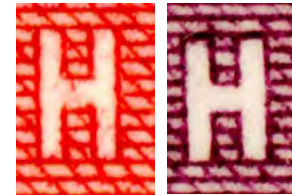


Figure 15

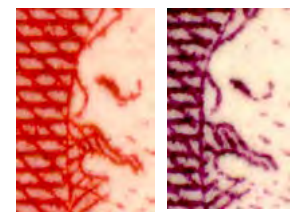


Figure 16



Figure 17



Figure 18



Figure 19

Steel master plates for each value were of 320 impressions, and comprised four groups of 80 (Sheets A, B over C, D), each 10 horizontal rows of 8. For the 3½d value, from a single alto plate, six nickel electrotype plates were manufactured, five of which were used for printing. For the 4d value, from a single alto plate, six nickel electrotype plates were manufactured and used for printing. Sheets of 80 were issued to post offices for sale from 6 November 1957.

VARIETIES

The Australian Commonwealth Specialists' Catalogue lists and illustrates two varieties for the 3½d value: Sheet A, 10/1 Re-entry to “ISTMAS”, “TRALI” and star, and Sheet C, 1/7 Retouch over “3”. Other minor varieties are recorded in various journals for each value, but none are worthy of note here.

Acknowledgements:

The author wishes to thank Richard Breckon APR, FRPSV for providing access to and scans from the Australia Post Archives and for his advice.

References:

Australia Post, *National Philatelic Collection*.

The Australian Commonwealth Specialists' Catalogue: Queen Elizabeth II, 2019 edited by Geoffrey Kellow, pp8/84, 85.

A Previously Unrecorded Privately-Printed Newspaper Wrapper of Victoria

Ian P. Greig FRPSV, FRPSL, FBSAP



A previously unrecorded privately-printed newspaper wrapper of Victoria has been found. The example is not recorded by *Higgins & Gage World Postal Stationery Catalog* or by Carl Stieg – *Victoria Postal Stationery 1869-1917*.

The embossed “stamp” is as the Carl Stieg type KE3 but is in the format produced for “Norwich Union Fire Office” as KE2.

Initially, I thought it was as KE2 which had been incorrectly identified in the book as the illustration is unclear, but a “Cancelled” copy of KE2 is illustrated in *The Specimens Stamps of Victoria* by Kellow, Turner and McCredie on page 85.

The example as illustrated (front and back) is used dated 1 April 1881 at Melbourne and is on white horizontally wove meshed paper. The wrapper has not been opened but printed, as seen in reverse under the shields on the back is “WITH MR YE... ..E COMPLIMENTS”. Unfortunately, the shields cover the middle of the text and the name cannot be read.

Used copies of any of the privately printed wrappers are rare but for an entirely new unrecorded example to emerge after 140 years is a little surprising.

References

Stieg C L, *Victoria Postal Stationery 1869-1917*, Maryland: Triad Publications, 2001

Kellow G N, Turner R and McCredie W, *The Specimen Stamps of Victoria*, Melbourne: Royal Philatelic Society of Victoria, 2013

Higgins & Gage World Postal Stationery Catalog

Commonwealth of Australia & The 'DUBOIS' Collection (part II)



CORINPHILA AUCTIONS – A TRADITION OF SUCCESS

As the oldest stamp auction house in Switzerland, situated in the international financial centre of Zürich, we at Corinphila Auctions really know the market.

The most specialised philatelic knowledge, fastidious presentation and an international customer base with strong purchasing power guarantee the highest prices.

Australian States to be offered in June 2023



www.corinphila.ch



CONSIGN NOW !

Next Corinphila Auction:

5-10 June 2023

Separate 'hard bound' Auction Catalogues for
'one country' or 'single owner' a specialty

We are quite willing to discuss larger holdings in
your own home.

Latest date for consignments: 5 March 2023



CORINPHILA AUKTIONEN AG
WIESENSTR 8 · 8032 ZURICH · SWITZERLAND
Phone +41-44-3899191
www.corinphila.ch



CORINPHILA VEILINGEN BV
AMSTELVEEN · NETHERLANDS
Phone +31-20-6249740 · www.corinphila.nl

'A Few of My Favourite Things', Number Thirteen: A Common Item in Uncommon Circumstances

Gary Watson FRPSV, FRPSL, FACCCofNSW, FBSAP

After a dozen contributions to this fine journal of record, my readers will have started to understand that I am passionate about all the aspects of both postal history and social history that combine to produce great covers. However, with most of my treasures locked-away in a currently unopenable safe (don't ask!), I decided it was time to demonstrate that even an outwardly modest piece can be entirely worthy of inclusion in the pantheon of My Favourite Things.

I have several rules, or perhaps guidelines is more accurate, that inform my decisions about what I should acquire for my several collections. A favourite aphorism is: "Common Items in Uncommon Circumstances".

For example, a base-rate envelope to Germany with a Kingsford Smith 3d blue tied by a Melbourne machine cancellation is unlikely to get anyone very excited. However, the same issue overprinted 'O S' - a rare item postally used, even off-cover - in combination with other stamps on a registered airmail cover from Canberra to Iraq will pique the interest of every postal historian who knows his or her onions.

On this occasion, my subject is a 1902 envelope paid at the foreign letter rate of 2½d per half-ounce to the United States. There are literally thousands of covers still in existence that conform to this description. However, relatively few of them bear attractive advertising, or were posted aboard ship, or were addressed to a major trade exposition.

I might have been happy to acquire a cover that belonged in any one of those enhanced categories. To have the opportunity to purchase a little beauty that ticked all those boxes was one of those opportunities that the modern-day hunter in me could not ignore.

So, to encourage you to also wax lyrical about My Favourite Thing for this quarter, without further ado, here it is, in all its green glory. Yes, I concede that it is a trifle soiled. But, it is nonetheless a turn-of-the-century work-of-art.



At this point, we do not know exactly when the envelope was posted. Volume Two of the marvellous *Australia New Zealand UK Mails* by Colin Tabcart RDP unfortunately (on this occasion) stops at the end of 1900, just before Federation [1].

The New South Wales stamps have been struck by a boxed

'LOOSE LETTER' marking of a New Zealand pattern, which is confirmed by the Auckland transit backstamp of 5AP02 that indicates a departure from Sydney (which is also confirmed by the sender's endorsement on the flap) a few days earlier. Turning to that remarkable online resource *Trove*, it is a simple matter to learn that one of the ships expected to depart from Sydney on 1 April 1902 was the *Sonoma*, bound for Auckland and San Francisco, via Honolulu [2]. In fact, it was the only ocean-bound departure out of Sydney on April Fools' Day. (To ensure this was not a seasonal joke, I did a similar check for the following few days and could find no other Sydney departure that could have carried this mail.)

Of course, my eagle-eyed readers will have already noted that the *Sonoma* is the middle ship of three illustrated on the face of the envelope.

So, let us take a slight detour and investigate the Oceanic Steamship Company (abbreviated to the 'Oceanic Line'), the publisher of the illustrated envelope. In 1881, the Oceanic Line was founded by John Diedrich Spreckels, a German-American industrialist who has been credited with being the driving force behind the growth of San Diego, a minor port in southern California, into a major city [3].

Colin Tabcart notes that, from 1885, the Sydney-San Francisco mail contract was held by a joint venture between the Union Steam Ship Company of New Zealand and the Oceanic Line. This arrangement lasted until 1900, after which and until 1907 the contract was held by the Oceanic Line alone [4].

Over time, the Oceanic Line owned 17 ships. As illustrated on our subject envelope, at the beginning of the 20th century, the *Sierra*, the *Sonoma* and the *Ventura*, all named after counties in southern California, were assigned to the trans-Pacific service. According to Wikipedia, all three ships were commissioned in 1900 [5].

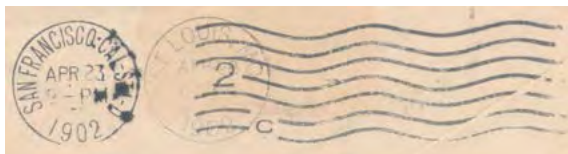
The same illustration, 'Our Sister Ships', was used extensively by the Oceanic Line in its advertising and promotional materials. On a c.1900 page from *Harper's Magazine*, shown nearby, the imprint 'WH BULL' is discernible at the lower-right above the word 'VENTURA'. The imprint was removed from the printing plate for the envelope.

William Howell Bull was a prominent commercial artist, perhaps best known



for his travel posters promoting America's south-west. I think you will agree that his commission to create this design was an inspired choice. The three ships, cutting through the waves, at full-speed, as seen through a pair of binoculars, makes for one of the most attractive advertising covers used from Australia.

In the Harper's advertisement, the company states that all three ships were built "especially for this service", and that "They will save five days in [*sic*] the voyage to Sydney, making the trip in twenty days."



The San Francisco machine datestamp on the reverse of the envelope is of 23 April 1902, twenty-two days after departure from Sydney. There may have been a delay, perhaps at Auckland or Honolulu, or 22 days may have been the scheduled 'homeward' trip, the two extra days being required because the voyage was all up-hill [6].

Surprisingly, it was another five days before the cover arrived, by rail, at its intended destination of St Louis, Missouri. Although the St Louis machine datehead was struck over and is obscured by the San Francisco marking, it is definitely of APR28/1902.

One of the defining events in the expansion westwards of the United States was the purchase from France in 1803 of its possessions in and around Louisiana. The resulting 'Louisiana Purchase' is something of a misnomer because the United States purported to acquire a vast swathe of land, some 828,000 square miles (more than 2,000,000 square kilometres) of it, stretching all the way from the Gulf of Mexico, northwards into Canada!

This is redolent of Captain Cook 33 years earlier sticking a flag in the sand and claiming the whole of the eastern half of Australia for Great Britain. These unrelated events represent the two largest imperialist land-grabs ever successfully consummated. Black fella and red man be damned.

Of course, history is written by the winners and, thus, a vast and imposing World's Fair was planned by White America to celebrate the centenary of the absurdity of the 'purchase' of one third of the continental United States, as seen on the highest denomination in the set of five stamps issued for the event.



10-cent red brown Map of Louisiana Purchase single (National Postal Museum: https://postalmuseum.si.edu/object/npm_2005.2001.69)

Again, courtesy of Wikipedia [7], we learn that St Louis (pronounced "loo/is", not "loo-ee") and Kansas City (400km to the west but still in Missouri, not Kansas), vied for the rights to host the celebrations. Kansas City lost out to St Louis,

where the municipal government raised the enormous sum of US\$5,000,000 from the sale of city bonds, and a further \$5,000,000 from private donors.

Major planning for the event began in 1899, with invitations to exhibit sent to nations and colonies around the world. The opening was actually delayed until 30 April 1904 to maximise the participation of foreign countries, of whom about 50 booked exhibition space, along with 43 of the then 45 States of the Union.

It might have been thought that the new Commonwealth of Australia would have been an eager entrant. However, the fact that momentum gathered before Federation, on the first day of the 20th century, seems to have encouraged the individual States, rather than the Commonwealth, to be involved. Certainly, New South Wales had a grandiose, if rather small, exhibit of agricultural produce.



The 1904 World's Fair, St. Louis, Missouri: an Australian exhibit: New South Wales agricultural produce, 1904 (Wellcome Library No. 572642i: <https://wellcomecollection.org/works/efnrvk5>)

Although it is not an article of official mail, it is possible that our subject envelope, addressed as it is to "Louisiana Purchase Exposition Co/Bureau of Publicity", contained a confirmation of the Premier State's intention to exhibit. Or perhaps it was a request to advertise the Oceanic Line during the Exposition, which was also home to the 1904 Olympic Games, a lacklustre affair barely worthy of the name, especially as only two Australians competed.

Regardless of the contents, this envelope provides a wonderful link between Australia's only trans-Pacific postal service of the time and an event that attracted almost 20 million people. Is it any wonder that this otherwise humble 2½d rate cover is one of My Favourite Things?

References & notes

- [1] *Australia New Zealand UK Mails, Volume 2, 1881-1900: Rates Routes and Ships Out and Home* by Colin Tabcart RDP, Fareham: Colin Tabcart, 2011
- [2] Trove Online Search Engine: *Sydney Morning Herald*, Tuesday 1 April 1902 at page 4: 'Projected Departures'
- [3] *The Man, John D. Spreckels*, biography by H Austin Adams, San Diego, Calif.: Press of Frye & Smith, 1924
- [4] Tabcart, cited above, at page 151
- [5] https://en.wikipedia.org/wiki/John_D._Spreckels
- [6] Indulge me!
- [7] For the record, Abacus Auctions happily contributes a voluntary annual 'subscription' towards Wikipedia's operational costs

Early Registration Labels in Australia: - Western Australia, Part 1: The Experimental Labels

Kevin J Burt FRPSV

Western Australia has been a real challenge to catalogue so that descriptions and classification work successfully and factually for collectors. The number of types and sub-types far exceeds those from the other states. There are some 39 basic types, not including the 15 different Compensation Labels.

This state certainly went on its own as far as label size and sheet format were concerned, and produced labels experimentally for a number of years in differing arrangements. This period extended from 1908 to around 1915 although large labels continued to be issued after that¹.

The earliest example of W1 seen so far is on a receipt. The label was printed in identically numbered pairs, horizontal or vertical. There were also three numbering machines used.

W1c, also with different numerals, has rouletting top and bottom and may have been printed in a strip, most likely of five, and not identically numbered³.

All rouletting is serrated - or zig-zag - gauging 13.5 if measured as perforations.



24 December 1908: W1a on a receipt, with a small fragment of its upper neighbour which would have gone onto the article.

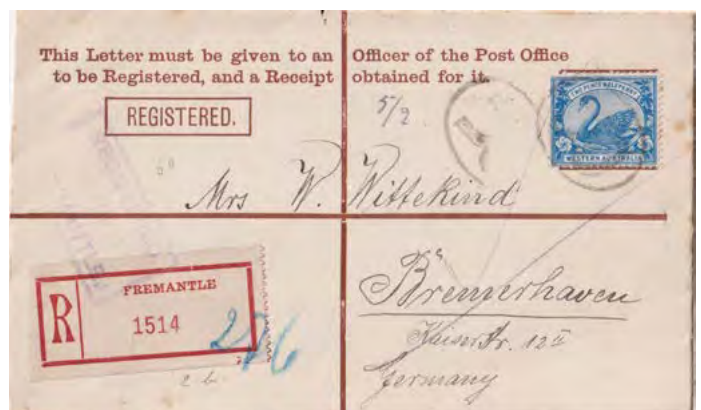
W1a was printed in a vertical pair, identically numbered, one for the receipt and one for the article, the rouletting being at the top or bottom of the label.

W1b was printed in horizontal pairs also identically numbered, the rouletting being at both ends or the left side only of the label.

It can be seen that W1b was numbered with a different machine. As these labels are very rare, it is not known whether W1a or W1b exist with both pairing formats.



11 August 1909: W1a on cover Boulder to New Jersey U.S.A., where it arrived on 22 September. This label has rouletting bottom and left side (to allow separation from the butt) only. So, its partner would have gone to the receipt.



5 January 1910: W1b on cover Fremantle to Germany, arrival date 5 February. Note that the label is rouletted sides only (the left side rouletting has been torn off - which would have been the butt). The different numerals are quite obvious.

W2 labels differed from W1 labels by the use of a different large "R". Otherwise numbering machines were the same, as can be seen from the two examples illustrated. There may be more differences "out there". These labels were issued in

horizontal pairs, identically numbered, one for the article, one for the receipt, same as W1b.



23 April 1910: W2a on cover Narrogin to Germany, arriving Charlottenburgh 21 May 1910.



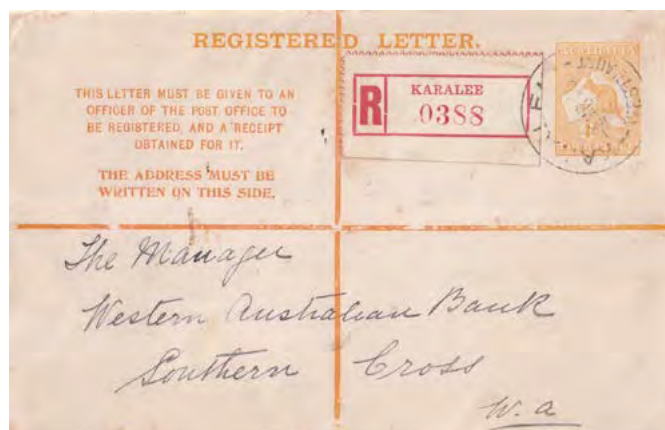
31 July 1912: W3a on domestic cover. To be a true W3a, roulettes should be present on the right side of the label. If on the left side, it could be either W3a or W3b.



1 February 1913: W2b on domestic cover Highgate Hill (an inner-north suburb of Perth) to Ashfield, Sydney, arriving 10 February.

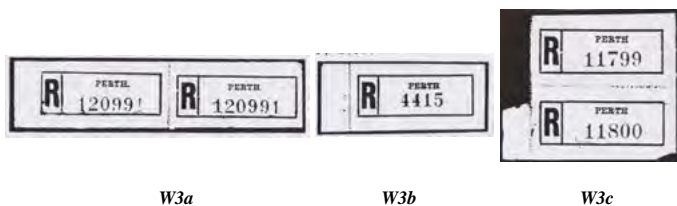


5 April 1913: W3b on cover from Brisbane St., to Philadelphia U.S.A., where it arrived on 15 May.



6 March 1916: W3c on domestic cover to Southern Cross, arrival date unknown.

Experimentation continued with the W3 labels. These were “normal” sized labels. W3a was issued in horizontal pairs, similar to W1b, numbered identically (120991). W3b was issued as a single label (4415). W3c was issued in vertical pairs, sequentially numbered. The three illustrations below are from the *Black Swan* magazine².



W3a

W3b

W3c

The W3 series of labels do not quite match the W1 and W2 series regarding their formats. The set-up of W3b is almost unique in Australian registration labels, the only other example being W5b. The earliest recorded date of usage of W3 was 3 October 1910² at Perth. That date places the series well within the experimental period.

The W3b and W3c format indicates that it was probably decided it was just as easy to write the number on the receipt as to stick on a label; this also uses less labels.

W4 was very similar to W3, the difference being in the size and position of the large “R”. Its format of issue is unknown, as a copy even off cover has not been seen. It is believed to have been issued to only three post offices around 1915. Turley omitted to list the other two². So, it is one of the major rarities of the registration label scene.



W4

References:

1. Burt, K.J. (2018), *Post Office Registration Labels of Australia and its Territories*, Melbourne, RPSV.
2. Dzelme, J. (1983), “Registration Labels of Western Australia”, *Black Swan*, Vol. 4 No. 7, September, pp. 80-83.
3. Turley, R. and Gavin, A.A. (1973), “Australian Registration Labels”, (11 part series), *Australian Stamp Monthly*, January to November.

The Perf. 12 - 2d Naish Design Stamps of the 1880 - 1884 Period of Victoria

Ian P Greig FRPSV, FRPSL, FBSAP

As a service to collectors, this article was also published in The Bulletin (British Society of Australian Philately), Vol. 77 No. 5, October 2022, p. 180. –Ed

The identification of the Perforation 12 used on the C. Naish Design 2d Brown and Mauve stamps of the 1880 – 1884 period seems to cause challenges to many collectors and dealers alike. The interest is of course in that this machine was little used on these stamps and so stamps with this perforation are collectible and are catalogued at about 200 times the normal perforated stamp; everyone wants to find one!

The challenge is that some of the perforation machines used at this time were not consistent in spacing over the full length of line of perforation.

One machine in particular is so variable that with the larger stamps, such as the Stamp Duty stamps of this period, it is almost possible (especially in multiples) to plate the stamps from the perforations on the four sides.

One of these machines has a part of its length with spacings very close to the Perf 12 but they are characterised by small holes and blunt teeth, and usually only one or two sides show these characteristics.

The true single line Perf 12 machine (in fact 11½ - 12), the catalogue variety, is however consistently under 12 and is not difficult to identify. This machine, although it had been around many years, at the end of 1879 was given new pins and the holes drilled larger. Copies of these stamps thus have distinctive large holes and very sharp teeth as the example shown of the 2d brown, SG 210ab. The perforation is in fact between 11½ and 12, but never over 12. Some stamps do show less distinctive characteristics on some individual holes, this being as a result of wear on the machine teeth. However, from experience, other areas of the run of teeth on the same stamp still show the above large holes and sharp teeth characteristics.

If there is any doubt on the identification of this perforation, it is recommended a copy of the One Shilling Bell, SG 186 is used as a comparison as the blue paper helps with the identification. If you look at a number of the One Shilling Bell stamps, the Perf 12 stamps are easily identified from the above description.

I hope this helps with identification and, in future, stops so many stamps appearing in auctions incorrectly described as having this elusive Perf 12 perforation.



The usual 2d Brown Perf 12½



The 1/- Blue Perf 12 SG 186



The 2d Brown Perf 12 SG 210ab

Reference

L. L. R. Hausburg, "The Perforations of Victoria", *Stanley Gibbons Monthly Journal*, Vol XVII, No 203, 31 May 1907, pp. 230-233

Exhibition Awards for Society Members

Congratulations to RPSV members for their awards at INDONESIA 2022, ANPEX 2022 and LIBEREC 2022. RPSV members served at INDONESIA 2022 as Jury members, Bernard BESTON (Honorary President), Ian MCMAHON and Philip LEVINE (Apprentice Juror); at ANPEX 2022 as Committee members, Martin WALKER (President), David FIGG (Treasurer), Stuart WATTISON (Catalogue Editor) and John MOORE (APF Liaison), and as Jury members, Anthony PRESGRAVE (Chairman), Glen STAFFORD (Secretary), Charles BROMSER and Philip LEVINE; at LIBEREC 2022 as Jury member, Charles BROMSER (Apprentice) and as Commissioner, Stephanie BROMSER.

INDONESIA 2022, World Stamp Championship Exhibition, Jiexpo Kemayoran, Jakarta, 4–9 August 2022

- Jeanette BANFIELD**, Taxed from the Cradle to the Grave (Revenue, 7 frames): GOLD (91) + Special Prize
Glen STAFFORD, Nicaragua: Airmail Stamps 1929 to 1937 (Aerophilately, 8 frames): GOLD (90)
Glen STAFFORD, Bolivian Revenues to 1906 (Revenue, 5 frames): LARGE VERMEIL (85)
John DIBIASE, Postal Notes and Orders of Australia (Revenue, 5 frames): VERMEIL (83)
John MOORE, 1988 Australia Living Together (Modern Philately, 5 frames): VERMEIL (80)
Ross DUBERAL, British Military Administration of Malaya (Traditional, 5 frames): LARGE SILVER (76)

ANPEX 2022, National One-Frame Exhibition with Telegraphic Theme (150th Anniversary of the Overland Telegraph), Hectorville Community Centre, Hectorville, SA, 20–21 August 2022

- Frank PAUER**, 1954 Telegraph Centenary Australian First Day Covers: INVITED
Mark DISERIO, Australia – Lettercards Stamped to Order (Postal Stationery): LARGE GOLD (94)
Harry LOWER, The 1891 Surcharges of South Australia – Lettercards Stamped to Order (Traditional): LARGE GOLD (94)
Peter ALLAN, Tasmanian Free Mail 1853 to 1882 – Acts and Regulations (Postal History): LARGE GOLD (91)
Brian PEACE, Adelaide & Port Adelaide First Handstamps (Postal History): LARGE GOLD (91)
Martin WALKER, Half Penny GPO Definitive of South Australia (Traditional): LARGE GOLD (91)
John DIBIASE, Western Australian The Telegraph Forms (Telegraph): GOLD (89)
Philip ADAMS, Australia's Kangaroo and Map issue: the ½d Green (Traditional): GOLD (88)
Bernie BESTON, Ecuador Telegraph Forms (Telegraph): LARGE VERMEIL (83)
Martin WALKER, South Australian Telegraph Forms 1902–1917 (Telegraph): LARGE VERMEIL (83)
Martin WALKER, Discount and Saving Stamps issued by Australian Retail Stores (Cinderellas): LARGE VERMEIL (83)
Bernie BESTON, Queensland Electric Telegraph (Telegraph): LARGE VERMEIL (82)
Bernie BESTON, Ecuador Telegraph (Telegraph): LARGE VERMEIL (82)
David FIGG, Ted Ryko – Adelaide to Darwin by Bicycle (Picture Postcards): LARGE VERMEIL (81)
David FIGG, Circular Quay, Hub of Sydney (Picture Postcards): LARGE VERMEIL (81)
Martin WALKER, Australia's Radio Telegraph Services (Telegraphs): LARGE VERMEIL (81)
David FIGG, Brookes Limited (Picture Postcards): LARGE VERMEIL (80)
John DIBIASE, Monte Bello Islands (Cinderellas): VERMEIL (79)
David FIGG, The Independent Order of Rechabites (Picture Postcards): VERMEIL (79)
Ian FUARY, The Decimal Specimen Sets (Traditional): VERMEIL (79)

John DIBIASE, Royal Antediluvian Order of the Buffaloes (Postal History): LARGE SILVER (74)

Ian FUARY, Red and Green – 1938 to 1962 (Traditional): LARGE SILVER (74)

John MOORE, (Zanzibar) Jamhuri 1964 – The Locally Handstamped Overprints (Traditional): LARGE SILVER (74)

John WILKINS, Australia Post's Indigenous Designs (Traditional): BRONZE (57)

**LIBEREC 2022, European Stamp Exhibition and Polar Salon,
Wellness Hotel Babylon, Liberec, Czech Republic,
13–16 October 2022**

Simon RICHARDS, The Postal History of Savoy to GPU (Postal History, 5 frames): GOLD (91)

Mark DISERIO, Victoria 2d DLR Embossed Envelopes (Postal Stationery, 2 frames): LARGE VERMEIL (88)

John DIBIASE, The Lions of Persia (Picture Postcards, One-Frame): LARGE VERMEIL (88)

Bernard BESTON, Avis de Reception – Australia & Colonies (Postal History, 8 frames): LARGE VERMEIL (87)

Martin WALKER, US: 1933-35 Byrd Antarctic Expedition (Traditional, 5 frames): LARGE VERMEIL (85)

David FIGG, Antarctic QSL Cards (Polar Salon, 5 frames): VERMEIL (81)

Bernard BESTON, Panama: Semi Postal Issues 1939–1949 (Postal Stationery, 3 frames): VERMEIL (80)

Ian McMAHON, Canberra Tracking Stations (Astrophilately, One-Frame): VERMEIL (80)

Glen STAFFORD, Nicaraguan Postage Stamps – The Gold Currency Surcharge of 1913 (Traditional, 4 frames):
LARGE SILVER (77)

David FIGG, A Child's Plea – "Please Have you got a Cigarette Picture?" (Picture Postcards, One-Frame):
SILVER (72)

John MOORE, Lord Howe Island – A Traveller's Tale (Picture Postcards, 5 frames): SILVER (71)

Martin WALKER, Byrd's First Antarctic Expedition (Polar Salon, One-Frame): BRONZE (60)



Is **finding** insurance driving you **nuts?**



Contact H.W. Wood Pty Ltd for all your insurance needs.

Visit our website at www.hwint.com.au or
call us at (03) 9819 9122 or email us at admin@hwint.com.au

Chris Rainey Online

- British Commonwealth •
- Postal History •
- Thematic Postal History •

Visit my online shop
www.chrisrainey.com



Back Then: “Tea Wagon” at Melbourne Mail Exchange, circa 1950



The arrival of the afternoon “tea wagon” at the Mail Exchange building, Spencer Street, Melbourne, involved a cup of tea and two biscuits for each mail sorter.

The building also served as the city’s General Post Office until January 1964.

100 Years

Under the heading “A German Stamp Forger”, *The Australian Philatelist*, December 1922, reported an item that had appeared in *The Philatelic Magazine* (UK) that had been sent by the latter journal’s Berlin correspondent:

The Erfurt police have succeeded in capturing a professional forger said to be responsible for a great part of the bogus postmarks on German colonial stamps, which have, of late, been cropping up in ever-increasing numbers. The man, who in Erfurt, Leipzig and other German towns, had been selling counterfeit postmarked stamps of nearly all the former German colonies, was equipped with an excellent outfit for postmark forging. In his luggage were found no fewer than 18 exact bogus copies of German colonial postmarks, as well as a quantity of figure type destined to alter the dates of places That the otherwise well-informed forger sometimes made a slip is proved by the postmarks Buka and Namatanai [German New Guinea], the former showing the year 06 and the latter 02 and 11, while as a matter of fact, these two post offices were only opened in 1913 and 1912.

50 Years Ago

Our late 50-year member, Len Buchanan, who died shortly before his 100th birthday in 2018, presented a display of Australian Commonwealth at the Society’s Christmas meeting on 21 December 1972, before the traditional non-philatelic displays were introduced for this meeting. As reported in *Philately from Australia*, March 1973:

Mr L.W. Buchanan showed part of his extensive collection of Commonwealth varieties at the Christmas meeting. The display consisted of definitive issues of King George VI and Queen Elizabeth II, plus commemorative issues. Included were blocks of the £2 Arms with and without imprint showing the roller flaw and an imprint block showing retouch to the flaws on it. A large block of the 6d Kingsford Smith violet showed “Extra Islands” and re-entry. The Western Australian Centenary issue showed the two different plate re-entries in positional blocks, plus used copies of each, the Plate 2 being a cover. Several sheets showed flaws and retouches found on the 8d Tiger Cat stamp, and others showed varieties found on issues of the Australian Antarctic Territory, including retouches on the 2/- blue, both mint and used, the latter being on cover

Royal News

Annual General Meeting, 2022

The 130th Annual General Meeting of the Royal Philatelic Society of Victoria Inc. was held on Thursday, 15 September 2022 with 22 members in attendance. The usual order of business was followed – the President's Address; the presentation and adoption of reports; election of Council; and the appointment of the Auditor.

President's Report (Frank Pauer LMRPSV, FRPSL)

This year started as we left 2021; we were in lockdown due to the Covid-19 pandemic and this did not end until the end of October 2021. In July, August, September and October we had Zoom meetings and, in November, we tried a hybrid meeting where we had about 12 members at Purves House and 28 members via Zoom viewing Gary Watson's presentation, "The Empire Airmail Scheme 1938-1939". This combination worked well and we will endeavour to have more in the future.

Members have embraced the Zoom technology and Council has scheduled Zoom Meetings on the fifth Thursday of the months of March, June and September 2022. This has enabled us to have international exhibits presented as well as being able to have international and interstate members joining the meetings. All the meetings this year have been of a very high standard and very interesting. I thank all those who have displayed and presented.

Unfortunately, due to the pandemic and members being cautious in attending meetings, our Christmas meeting had to be cancelled so we had a Zoom Christmas meeting with members showing some of their Christmas-themed items. Due to members still being hesitant in attending face-to-face, the January meeting was also via Zoom. Our first meeting at Purves House was in February 2022.

We had 22 members and guests gathered at Melbourne's Riversdale Golf Club on Monday, 4 April 2022 to honour our 50-year members embracing 2020, 2021 and 2022. Covid restrictions had caused the planned luncheon to be postponed twice over the past two years. It was with great satisfaction that we held the lunch to recognise five 50-year members and, posthumously, a sixth with 49 years' membership. The five 50-year members involved in the celebrations were:- John Lucaci (1970), Tim Morgan (1970), John Trowbridge (1970), Ken Scudder (1970) and Hugh Morgan (1972); the 49-year member was the late Rod Perry (1971). Three 50-year members attended the lunch: John and Judith Trowbridge, Ken Scudder and Hugh and Elizabeth Morgan. Unfortunately, John Lucaci and Tim Morgan could not be present. Rod Perry's eldest children, Fiona and Myles Perry, attended at the Society's invitation.

On a sad note, the chapter has closed on one of our 50-year members. Tim Morgan passed away on 20 July; he had been a member of the Society for 52 years. Sadly, he missed the 50-year lunch due to illness. Tim has been described by some of our members as one of the "characters" of the Society, and that he was! He had been on Council and on various committees over the years. His jovial smile and humour will be sorely missed around the Society.

The highlight of the year was the Society celebrating 130 years. The occasion was celebrated at both the daytime and evening meetings with an Anniversary Cake and finger food as well some wine that was donated by John Shawley. The two meetings were well attended and the Anniversary fruit cake was enjoyed by all.

At the Newcastle 2022 Stamp and Coin Expo in May, the Second Royal Challenge was held. This is a competition between the Royal Philatelic Society London, the Royal Sydney Philatelic Club, the Royal Philatelic Society of New Zealand, and the Royal Philatelic Society of Victoria. Each Society had a team of four exhibitors and thank you to Gary Diffen, Bill Clark, Charles Bromser and Malcolm Groom for accepting the challenge to be on the Royal of Victoria's team. The Royal Philatelic Society London won the challenge, with the Royal of Victoria coming an honourable second.

The Society's Annual Competition was held on 16 June 2022, and we had three very good one-frame exhibits. All three exhibits were awarded a medal by the judges: Les Lanphear III (USA) – NSW Penalty Mail, awarded a Silver Medal; Mark Diserio – Australia, Letter Cards – Stamped to Order, awarded a Silver Medal; and Jon Fladeby – Norwegian Surcharge Issues, awarded a Bronze Medal. Congratulations to all three entries which can be viewed on our website.

Philately from Australia has maintained its usual high standard. Thanks to all the contributors as well as Eric Frazer and his editorial committee for bringing out the journal in their usual timely manner.

The Expert Committee has had a very busy and productive year and the fees earned made a considerable contribution to maintaining our finances.

Allen Shatten is doing a fantastic job in maintaining our website by keeping it current and making any tweaks that are necessary. Allen also took on the huge task of putting the Society's journal, *Philately from Australia*, on to the website. The journal can now be viewed by everyone except the last five years which are available to members only. This is a huge resource for our members and the philatelic community. Thank you Allen.

Finally, I would like to thank all members of Council and other Society members who have given freely of their time to undertake the work that is so important for the successful running of the Society.

Honorary Treasurer's Report (Frank Pauer LMRPSV, FRPSL)

I am pleased to present this report on the Society's audited Financial Statements for the year ended 30 June 2022. After the two difficult years due to the Covid-19 pandemic, the Society's finances have returned to some sort of normality.

The Statement of Comprehensive Income this year shows a loss of \$3,219 as compared to a loss of \$5,899 for the previous year, a decrease of \$2,680. The Society made an Operating Net Profit of \$3,791 but, after allowing for the decrease in the investments at market value for the year of \$7,010, the Society made, as previously mentioned, an overall Book Loss of \$3,219.

Our total income this year was \$57,702 compared to \$52,928 last year; this is an increase of \$4,774. This increase is mainly due to an increase in Expert Committee fees of \$4,353, an increase of \$3,945 in Bourse Souvenir income due to having two souvenirs this financial year with the 2021 Souvenir selling out, an increase in publications sales of \$1,651 which were mainly sales from our website, and an increase in advertising income from *Philately from Australia* of \$2,940. These increases were somewhat offset by a decrease of \$10,017 in donations. Subscriptions this year were \$23,025, which is 39.9% of our income, an increase of \$2,000 compared to 2021 of \$21,025 (39.7 % of our income).

Total expenditure was \$53,911 compared to \$80,282 in the previous year, a decrease of \$26,371. This decrease was mainly due to a \$24,819 Land Tax bill in the 2021 year. The major expenses were Insurance \$10,240, Journal Production \$11,455, Postage \$4,489, Rates \$3,401, and Website \$2,393.

In the 2022 financial year, the Society purchased a new fridge at a cost of \$505 and \$1,142 was spent on the purchase of new books for the Library.

The Society has \$175,000 on term deposit, \$19,481 cash at bank and \$58,420 invested in shares at market value. As at 30 June 2022, the net assets of the Society were \$3,434,082 with our building and Library totalling \$3,056,949.

As can be seen, we are only just surviving and need to find other sources of income. If we have an unexpected cost, we will need to dip into our reserves. One way members could help is to consider donating to the Society or a bequest.

Council kept the subscriptions for the 2022/2023 year the same as last financial year and they are: Metropolitan members \$120, Country and Interstate members \$110 and Overseas members \$135.

I would like to thank the members of the finance committee Ted Gallagher, Alan Grey and Gary Diffen, as well as John Shawley, for their assistance and advice during the year.

Business Manager's Report (Peter Leitch FRPSV)

At the start of the Society's year, Melbourne was still in Government-directed lockdown. Fortunately for me, the Post Office was still operating so I was able to process any book orders. In recent months, the lockdown restriction has been lifted. International mail service has not returned to pre-pandemic levels resulting in possible delays for overseas orders.

There was a steady stream of orders during the year. Once I am advised that we have received payment, the books are posted, often before lunch to catch the midday pickup from my local Post Office.

House Committee Report (Ted Gallagher FRPSV)

The Committee comprises: Ted Gallagher (Chairperson), John Shawley and Brian Fuller.

Only routine maintenance was carried out during the year. This included the lift.

Publications Committee Report (John Shawley LMRPSV, FRPSL, Acting Chairperson)

No books were published this year. However, several books are under development towards the end of the year.

The most developed text is Bob Hillman's "The Crowned Oval Datestamps of Victoria". The complete text is available and

currently subject to editorial discussions. The book should be published in the coming year.

A proposal from Jon Tiernan to produce a book on Victorian Pre-Decimal Parcel Stamps has been given a positive initial response subject to his developing an outline of its contents.

Richard Breckon continues to work on "Australian Commonwealth Postal Rates" and Gary Diffen has commenced producing a magnum opus on Australian Forces in WW1.

A target for the last three productions would be for them to be available at the Stamp Show planned for early 2024. This would mean the texts being complete and ready for production in mid-2023 which will be challenging, in particular for the WW1 book.

Sales of "The 2d Queen-On-Throne" and "Post Office Registration Labels" have exceeded the initial print runs and small additional print runs have been organised. Digital printing lends itself to relatively inexpensive small print runs.

The Publications Committee consists of Messrs. Breckon, Leitch, Lloyd-Smith, Pauer, Plaw and Shawley. The Committee will be busier over the year ahead.

Expert Committee Report (John Shawley LMRPSV, FRPSL, Chairperson)

The Committee comprises John Shawley (Chairperson), John Boykett, Gary Diffen, Ted Gallagher, Matt Hancock and Kevin Burt (Secretary). Bill Clark resigned during the year and the Committee thanks him for his services.

The results for the 2021/2022 year were much improved from the previous year with total billings of \$11043.60. The Committee enjoyed continued support from commercial philately. Twenty free opinions were issued to members.

During the year, the Committee commenced computerising the case management processes that support expertising, Allen Shatten providing guidance in this project. It is being done in stages, the first being record keeping. A spreadsheet now records the management of cases from receipt of item to its dispatch back to its owner and account generation, and replaces four handwritten record books. 53 cases have now been followed using it and the usual bugs have been mostly ironed out.

The Committee accepts stamps and postal history from Australian States, Commonwealth and Territories, and Pacific countries of the British Commonwealth.

Library Report (Richard Breckon APR, FRPSV, Librarian)

The Library Committee comprises Richard Breckon (Librarian), Eric Frazer, Peter Leitch, Allen Shatten and Ian Sadler.

The Maxus Library Catalogue Project, managed by Allen Shatten, continues to migrate the old Access database (the Library's contents as at early 2002) into the designated "fields" in the catalogue entries. All the Library's holdings of books, journals and most priced catalogues have been entered and backed up in the Library Catalogue database. In particular, Merylyn and Alan Grey have been cataloguing major auction catalogues (offering specific collections) and they have made much progress in this regard.

The Society's website features PDFs of most of the Library's holdings: the Australian Catalogue of Commonwealth and colonial era books, Non-Australian Catalogue of rest-of-the world books and Cumulative Indexes. During the year, all editions of *Philately from Australia* from 1949 were uploaded to the website. Anyone may access editions more than five

years old, irrespective of whether they are members or not. This work, managed by Allen Shatten as part of the Website development project, expands access to the Library's resources and I am grateful for Allen's commitment.

The acquisition of a compactus in the front room of the ground floor has been delayed by component parts yet to arrive in Australia from overseas. It is expected that we should have the compactus installed by early 2023.

I wish to thank members who donate material to the Library. We encourage donations, especially those that add to the books and fill the missing gaps in journals and auction catalogues. Duplicate library items were offered for sale at this year's Royal Bourse.

Although it has not been practicable to bind journals for the past three years, the work will recommence shortly.

Now that the Society's normal activities are restored, Library Afternoons have recommenced on the last Saturday of the month, and access is available during evening and daytime meetings, and at other times by appointment. It is good to see members making regular use of the Library's holdings again.

Philately from Australia Report (Eric Frazer FRPSV, Editor)

The journal has had an excellent year with a Vermeil award at Philanippon 2021 and a Large Vermeil at London 2022, testaments to its continuing high standard. Also, due to the tremendous efforts of Allen Shatten, all past editions of *Philately from Australia* are now available and searchable on the Society's website. Fortunately, pandemic restrictions have now eased and journal production is essentially back to "business as usual". All issues of the journal were produced on schedule this year, with an average of 34 pages in total (including advertisements).

The Editorial Team of Eric Frazer, Richard Breckon, Bill Lloyd-Smith and Gary Diffen has remained unchanged sharing a range of duties including author liaison, technical editing, reviewing, production scheduling, proof reading and advertising management. The presentation quality of the final product relies on our designer, Aggie Kacprzak (ADesign, Geelong, Vic.) and the professional printing team at Printgraphics (Mount Waverley, Vic.). All this is backed-up by dedicated support from John Shawley and Frank Pauer who ensure that the journal is finally despatched on time to financial members and subscribers.

Again this year, the journal has received a steady stream of both brief and extended research articles covering the broad scope of philately and postal history. Although the number of individual contributors has remained unchanged this year, there has been a healthy turnover of over 40% in authors which refreshes and extends the journal's content coverage. Articles have come from: John Barker, Richard Breckon, Andrew Brockett, Kevin Burt, John Curtis, Mark Diserio, Eric Frazer, Ted Gallagher, Ian Greig, Bill Lloyd-Smith, Frank Pauer, Brian Peace, Richard Peck, Graeme Plaw, John Shawley, Terry Smith, Russell Turner and Gary Watson. Long-running series have continued from the pens of Kevin Burt, Gary Watson, Ted Gallagher and Richard Breckon who remains our most prolific author, concentrating on Australian Post Office services and rates while still reporting on a wide range of Society matters.

As always, I must again thank everyone involved with the journal: the editorial and production teams, the authors, the reviewers, and especially the advertisers. Intending contributors can be confident that the Editorial Team welcomes diverse content and will work with authors to achieve the best result while maintaining the journal's high standard. Overall, the journal is in a very healthy state and we look forward to our 75th year of continuous publication.

Website & IT Report (Allen Shatten FRPSV, Chairperson)

Website: It has been a busy year. Minor upgrades or fixes have been applied:

- For book orders, postage rates were rationalised and descriptive text was added to individual books
- Photos of Council members have been added
- All of the website's plug-ins (e.g., our e-commerce plug-in) were brought up-to-date by Amit Naredi, our developer

Google Analytics was activated in October and we can now track the way our website is used. We experience around 200 – 250 visits per month. Archived journals, exhibits and books are our most popular pages.

News, Zoom meetings and exhibition links are updated regularly. Moving images of interesting Australia-related covers on the Home page are updated every two months.

Two substantial projects were completed during the past year:

Archived Journals: All copies of *Philately from Australia* were uploaded to the website after pre-processing. Facilities were introduced enabling any user to search and download copies of magazines more than five years old. More recent magazines can be searched and downloaded by members only. New issues are uploaded to the website as they are published. Once downloaded, users can search an individual magazine using Adobe Reader. This sizeable project consumed around 150 hours of combined effort and incurred external costs of USD1000 (approx. A\$1400).

A more sophisticated facility has been proposed. It would enable members to download specific articles based on search criteria. At this stage, demand does not appear to warrant the expense and effort involved.

Exhibits: The Exhibits pages were upgraded, with images added for most exhibit headings. A new facility was added to the website, to make the three most recent exhibits available from the Home page. For technical reasons, a new exhibit now has to be added twice: once for the Exhibits page, and a second time for the "most recent" facility on the Home page.

A number of important exhibits were added to the website, including:

- South Australian "Long Toms"
- WWI Troopship Convoys
- British New Guinea and Papua
- Tasmanian Pictorial Issues
- Tasmanian Stamped-to-Order Stationery
- Most of these exhibits have won gold medals.

Library Resources: An index of priced catalogues held in our Library was added to the website and the index to Australian books was brought up-to-date. Thanks to Graeme Plaw for his ongoing assistance with the indexes. An index of auctioneers whose catalogues are held in the Library will be added soon.

People: Michael Eastick provides back-up services and Amit Naredi (based in Jaipur, India) continues to act as our developer. Allen Shatten manages the website on a day-to-day basis. Gary Diffen maintains the moving images on the home page.

Other IT Matters: The proposed second laptop for Zoom presentations (refer last year's report) will not proceed. We can use the Library catalogue laptop for presentations.

A spreadsheet was developed to control submissions to the Expert Committee. After trial and modification by Kevin

Burt, the spreadsheet was put into operation. It eliminates the use of a number of manual logs. The final step of Expert Committee automation will be to computerise production of the Certificate itself.

Awards Committee (Ted Gallagher FRPSV, Chairperson)

The Committee comprises: Ted Gallagher (Chairperson), John Shawley, Gary Diffen and Frank Pauer.

Fellows: To be eligible to be considered as a Fellow, members must have been financial members for a minimum of eight years. The Committee has recommended the following members, whom it believes meet the criteria for Fellowship, including meritorious work for the benefit of the Society: Allen Shatten and Graeme Plaw

Council Approval: The Council voted to accept the above recommendations.

Council 2022-23

The following members have been elected to Council to serve for the year 2022-23:

President: Frank PAUER LMRPSV, FRPSL

Vice President: Gary DIFFEN FRPSV, FRPSL

Secretary: Bill CLARK FRPSV

Treasurer: Frank PAUER LMRPSV, FRPSL

Council members:

Richard BRECKON APR, FRPSV

Ted GALLAGHER FRPSV

Alan GREY FRPSV

Peter LEITCH FRPSV

Allen SHATTEN FRPSV

Immediate Past President: John SHAWLEY LMRPSV, FRPSL
Doug FARCH has been appointed Auditor.

RPSV Committees & Officers 2022-23

Finance Committee:

Frank Pauer LMRPSV, FRPSL (Chairperson and Treasurer),
Ted Gallagher FRPSV, Gary Diffen FRPSV, FRPSL,
Alan Grey FRPSV & John Shawley LMRPSV, FRPSL.

Philately from Australia Committee:

Eric Frazer FRPSV (Chairperson and Editor),
Richard Breckon APR, FRPSV (Assistant Editor),
Bill Lloyd-Smith FRPSV (Assistant Editor)
& Gary Diffen FRPSV, FRPSL (Advertising Manager)

Publications Committee: Chairperson (vacant),
Peter Leitch FRPSV, Richard Breckon APR, FRPSV,
Bill Lloyd-Smith FRPSV, Graeme Plaw FRPSV
& Frank Pauer LMRPSV, FRPSL

Business Manager: Peter Leitch FRPSV

Library Committee:

Richard Breckon APR, FRPSV (Librarian),
Peter Leitch FRPSV, Eric Frazer FRPSV,
Allen Shatten FRPSV & Ian Sadler

Expert Committee:

John Shawley LMRPSV, FRPSL (Chairperson),
Kevin Burt FRPSV (Secretary), John Boykett FRPSV,
Gary Diffen FRPSV, FRPSL, Matt Hancock,
& Ted Gallagher FRPSV

House Committee:

Ted Gallagher FRPSV (Chairperson),
John Shawley LMRPSV, FRPSL & Brian Fuller

IT/Web Committee:

Allen Shatten FRPSV (Chairperson),
Frank Pauer LMRPSV, FRPSL, Gary Diffen FRPSV, FRPSL
& John Shawley LMRPSV, FRPSL

Awards Committee:

Ted Gallagher FRPSV (Chairperson),
John Shawley LMRPSV, FRPSL, Gary Diffen FRPSV, FRPSL
& Frank Pauer LMRPSV, FRPSL

Exchange Branch: Bill Jenkins FRPSV (Superintendent)

Archives Committee: Peter Leitch FRPSV (Archivist)
& Bill Clark FRPSV (Secretary)

Forgery Collection:

John Shawley LMRPSV, FRPSL (Curator)

Bourse Committee:

Frank Pauer LMRPSV, FRPSL (Chairperson) & John Rennie

Victorian Philatelic Council Delegates: Peter Leitch FRPSV,
Frank Pauer LMRPSV, FRPSL, John Rennie
& Charles Bromser FRPSV.

New Members

The Society has gained three new members: husband and wife, Stuart and Helen Game (Vic.) and Bill Watson (Vic.), whose applications for membership have been accepted by Council. We wish them a long and happy association with the Society.

Glen Stafford FRPSL

Our Perth-based member, Glen Stafford, has been appointed a Fellow of the Royal Philatelic Society London. We extend our congratulations to Glen for this notable honour.

APO Awards

Our Canberra member, Ian McMahon, was made a Fellow of the Australian Philatelic Order (FAP) this year. He was awarded the honour at the APO Awards Dinner held in Melbourne on 8 October. Two recent Members of the Australian Philatelic Order (MAP), Royal members John Moore (NSW) and Tony Presgrave (SA), whose awards were announced in 2021, were also awarded their honours at the dinner. We extend our congratulations to these RPSV members.

SOCIETY SYLLABUS

www.rpsv.org.au

January 2023

3 (Tue) No Daytime Meeting

11 (Wed) No Postal History Group Meeting

19 (Thu) **Meet Your Council: Six Sheet Display**
by Council Members

28 (Sat) 2.00 p.m. Library Afternoon

February 2023

7 (Tue) 1.00 p.m. Daytime Meeting,

Surrender to the B.C.O.F.: John Rennie

8 (Wed) 7.30 p.m. Postal History Group

16 (Thu) 8.00 p.m. **Stamps of the Italian Occupied Balkans**
during WWI: Jack Gringlas

25 (Sat) 2.00 p.m. Library Afternoon

March 2023

7 (Tue) 1.00 p.m. Daytime Meeting, **Golf: Ross Newton**

8 (Wed) 7.30 p.m. Postal History Group (Zoom meeting)

16 (Thu) 8.00 p.m. **500 Years of Mail Disinfection: John Wettenhall**

25 (Sat) 2.00 p.m. Library Afternoon

30 (Thur) 7.00 p.m. **British Society of Australian Philately (BSAP)**
(Zoom meeting)

**THE ROYAL PHILATELIC SOCIETY OF VICTORIA INC.
STATEMENT OF FINANCIAL POSITION**

for the period ending 30 June 2022

Notes	2022 \$	2021 \$
Current Assets		
Cheque Account (ANZ)	13,289	15,557
Deposit Account (ING)	6,192	6,160
Term Deposit (ANZ)	175,000	175,000
Paypal Account	1,658	372
Sundry Debtor - Deposit	4,580	-
Stock of Publications	44,549	47,032
Shares in listed companies at market value	58,420	65,430
Total Current Assets	<u>303,688</u>	<u>309,551</u>
Non-Current Assets		
303 High Street - Ashburton	2,688,502	2,690,502
Fitting, Furniture & Equipment	31,426	31,512
Library Racking	2,492	4,895
Library Catalogue Software	311	311
Library	367,949	366,807
Forgery Collection	76,760	76,760
Total Non-Current Assets	<u>3,167,440</u>	<u>3,170,787</u>
Total Assets	<u>3,471,128</u>	<u>3,480,338</u>
Current Liabilities		
Subscriptions in Advance	475	5,800
Exchange Branch Vendors	7,253	7,248
Exchange Branch Superintendent	0	671
Exchange Branch Insurance Fund	4,499	4,499
Other Creditors	24,819	24,819
Total Current Liabilities	<u>37,046</u>	<u>43,037</u>
Total Liabilities	<u>37,046</u>	<u>43,037</u>
Net Assets	<u>3,434,082</u>	<u>3,437,301</u>
Members Funds		
Accumulated Funds	2,390,986	2,396,885
Asset Revaluation Reserve	1,046,315	1,046,315
Profit/(Loss) During The Year	(3,219)	(5,899)
Total Members' Funds	<u>3,434,082</u>	<u>3,437,301</u>

**THE ROYAL PHILATELIC SOCIETY OF VICTORIA INC.
STATEMENT OF CHANGES IN EQUITY**

for the year ended 30 June 2022

	2022 \$	2021 \$
Opening Balance 1 July		
Members' Funds	2,390,986	2,396,885
Asset Revaluation Reserve	1,046,315	1,046,315
Comprehensive Income for the year	(3,219)	(5,899)
Closing Balance 30 June	<u>3,434,082</u>	<u>3,437,301</u>

THE ROYAL PHILATELIC SOCIETY OF VICTORIA INC.
STATEMENT OF COMPREHENSIVE INCOME
for the period ending 30 June 2022

	Notes	2022 \$	2021 \$
Income			
Members Joining Fees & Subscriptions		23,025	21,025
Donations		1,038	11,055
Interest Received		561	1,066
Dividends Received		2,106	1,937
Sale of Publications		3,622	1,951
Advertising Income		9,750	6,810
P from A Subscriptions		1,085	1,155
Expert Committee		11,185	6,832
Exchange Branch		-	409
Bourse Souvenirs		3,960	15
Room Hire		400	200
Merchant Fees Charged		109	104
Postage Charged		810	369
Other Income		51	-
Total Income		<u>57,702</u>	<u>52,928</u>
Expenditure			
Audit Fees		770	660
Bank Charges & Fees		1,104	1,203
Bourse Souvenirs		1,450	-
Catering		83	36
Cleaning		847	638
Cost of Displays		896	-
Depreciation		5,059	5,627
Dinner - 50 year		783	-
Electricity		2,477	2,428
Expert Committee Fees		261	169
Filing Fees		60	59
General Expenses		893	692
Insurance		10,240	9,413
Journal Production & Printing		11,455	11,927
Library Expenses		558	3,866
Movement in Stock of Publications		2,483	2,028
Paypal Fees		99	46
Postage		4,489	4,060
Printing & Stationery		283	283
Printing of Publications		-	879
Rates		3,401	3,467
Land Tax		-	24,819
Repairs & Maintenance		324	2,250
Roayl Challenge Fees		1,170	-
Security Service		806	842
Subscriptions		345	129
Telephone		1,182	1,315
Web Site		2,393	3,446
Total Expenditure		<u>53,911</u>	<u>80,282</u>
Net (Loss)/Profit before Income Tax		<u>3,791</u>	<u>(27,354)</u>
Income Tax Expense		-	-
Net Profit after Income Tax		<u>3,791</u>	<u>(27,354)</u>
Other Comprehensive Income			
Unrealised Gains/(Losses) on investments available for sale		(7,010)	21,455
Total Comprehensive Income		<u>(3,219)</u>	<u>(5,899)</u>

abacus auctions

Stamps & Postal History, Coins & Banknotes, Sporting Memorabilia & Collectables

We invite you to participate ...

We will be conducting several major specialised auctions throughout 2023 including –

Dr Don Pearce's South Australia Part III: Postal History & Postal Markings

James Halliday's New Zealand Full-Face Queens (Chalons)

Papua Stamps & Postal History including from *Rev Roger Lee's* collection



Our accompanying General Public Auctions will include extensive sections of Stamps, Postal History & Postcards from Australia, New Zealand, the Pacific Islands featuring *Rev Roger Lee's* New Guinea Postal History, as well as British Commonwealth and Europe already consigned.

We invite you to take this opportunity to contribute suitable material for inclusion in these sales.



Contact us to arrange a complimentary, obligation-free appraisal of your **Stamps, Postal History, Picture Postcards, Coins & Banknotes, Sporting Memorabilia and Collectables.**

You can meet us at major Australian & International shows, and we are also available to visit you for consignments of higher value/greater size, with free transport & insurance.

abacus  auctions

29 Hardner Road
Mount Waverley, Victoria, 3149
AUSTRALIA

Post Office Box 296
Mount Waverley, Victoria, 3149
AUSTRALIA

Phone: +61 3 8513 0595
Email: info@abacusauctions.com.au
Web: www.abacusauctions.com.au