



CIRCA 1910 WILLIAM CROSBY & CO. - FISON'S' SHEEP DIPPING POWDER



IMPROVES THE WOOL.



FISON'S'

SHEEP DIPPING POWDER

(POISONOUS)

BEST IN THE WORLD.	KILLS ALL TICKS & LICE.	CHEAPEST AND MOST EFFECTUAL.
---------------------------------	--------------------------------------	-------------------------------------------

CURES AND PREVENTS SCAB.

A GOLDEN POWDER.

THE MOST PERFECT ACHIEVEMENT OF
 VETERINARY AND CHEMICAL SCIENCE. This
 preparation meets the requirements of a Dip that will
 effectually cure and prevent Scab, exterminate Lice, Ticks,
 etc., and leave the wool bright and soft. It is uniform
 in strength, easy to use and, with ordinary care, quite
 harmless. **Beware of Imitations.**

MIXES READILY WITH COLD WATER.

Remains in the fleece for a long time after dipping, thus
 destroying the eggs as well as the parasites. It

BRIGHTENS AND IMPROVES THE WOOL

and may be used for either Summer or Winter Dipping.

Sold in cases of ten packets. Each packet makes 125 gallons
 wash for dipping 250 sheep, or in all 1,250 gallons for dipping
 2,500 to 3,000 sheep, according to length of wool.

Full directions for use on each Packet.


MANUFACTURED ONLY BY

THE CHEMICAL UNION, LIMITED, IPSWICH, ENGLAND.

AGENTS:

WILLIAM CROSBY & CO

HOBART.



Only three examples recorded.

William Crosby & Co. were merchants founded in 1853 in Hobart. It is likely this card was produced around 1910 as 1d die is showing wear. Fisons were a world wide agricultural chemicals Company.

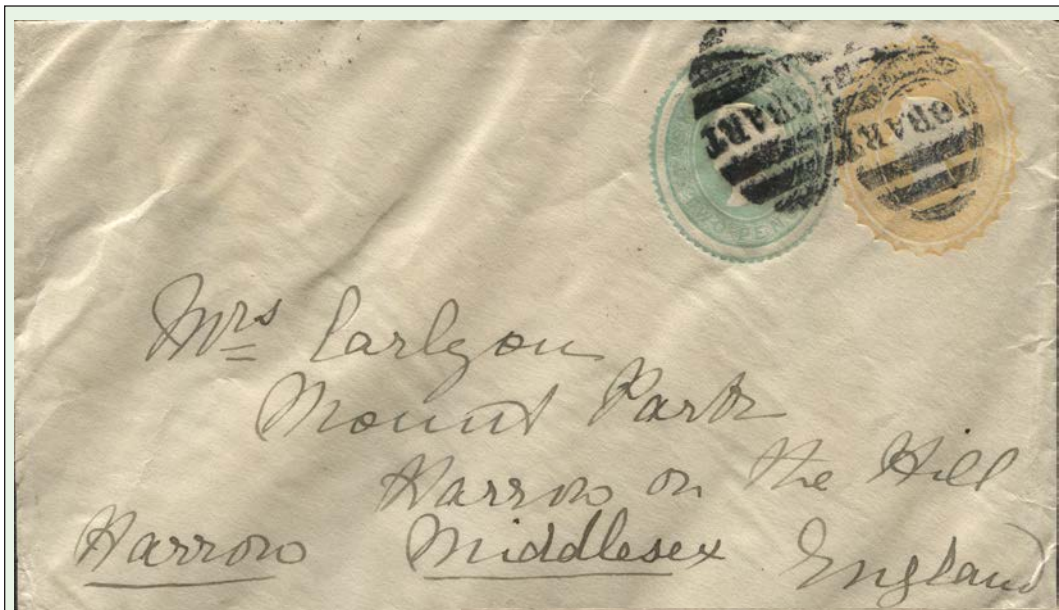


1891 - 1912 STAMPED TO ORDER FOR PRIVATE USE

1899 THE GRANGE, HOBART

Examples of the public arranging for stamping of private stationery with their property or business name imprinted on the reverse.

An 1899 newspaper reference describes The Grange '..as situated 5 miles from Hobart on Brown's River Road and consisting of 20 spacious apartments and other buildings'.



THE GRANGE,
HOBART.

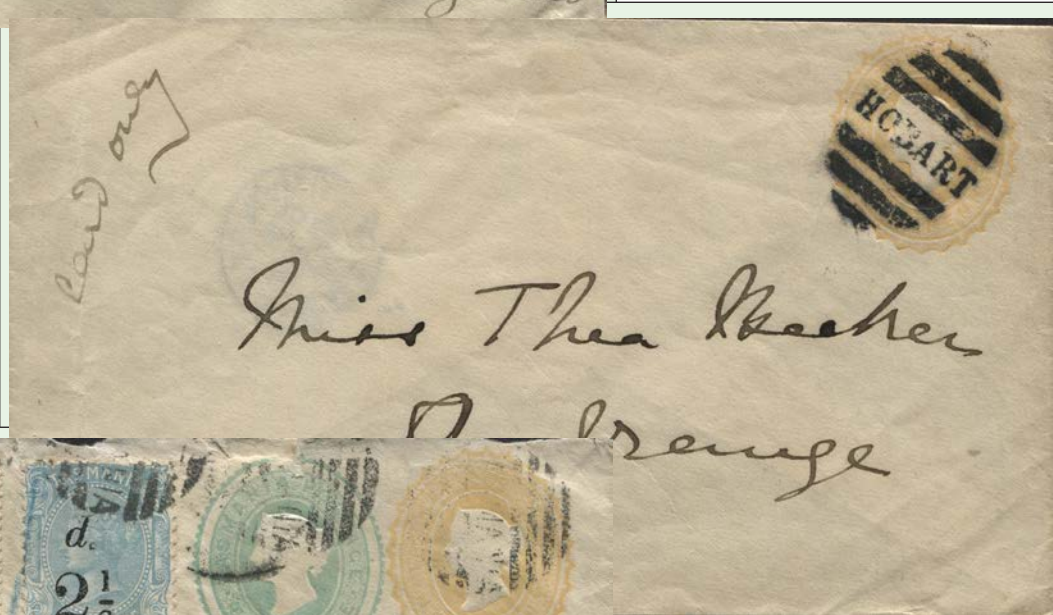
Inscription on flap in red

1899 (March 27) Hobart to London
stamped for the British Empire rate.

THE GRANGE,
HOBART.

Inscription on flap in blue

1899 (March 15) Used in Hobart at ½d.
Treated as a newspaper and not taxed



THE GRANGE,
HOBART.

Inscription on flap in red

1899 (April 10) Hobart to London
at 2½d. British Empire rate and 3d
registration.



1891 - 1912 STAMPED TO ORDER FOR PRIVATE USE

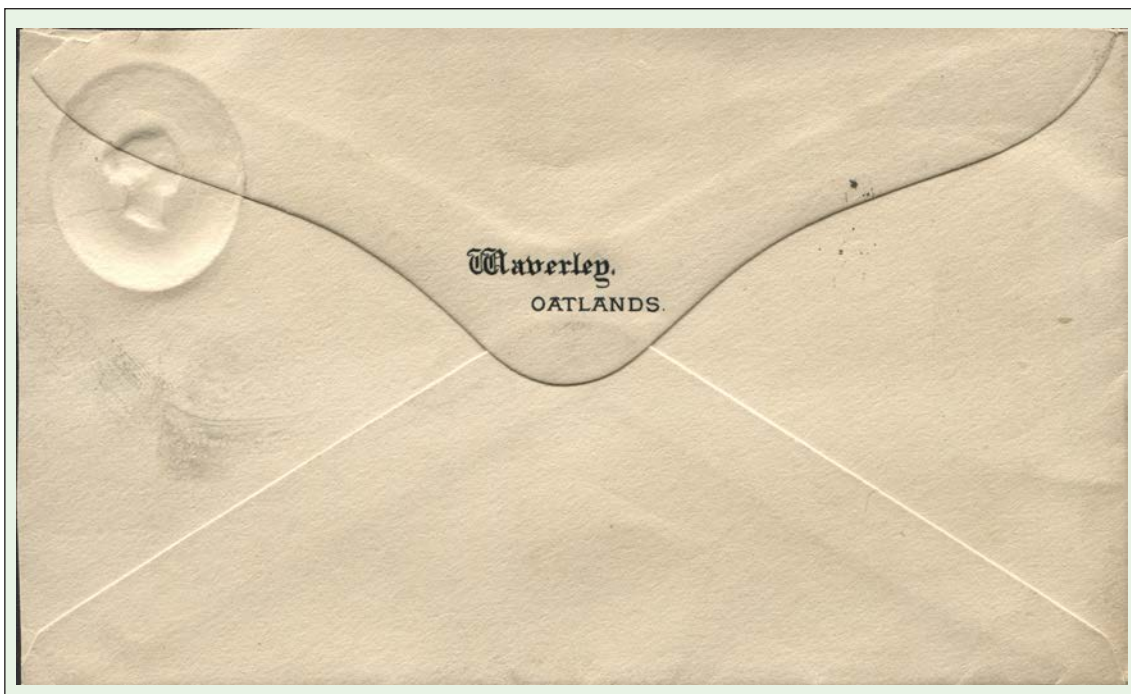
1912 WAVERLEY, OATLANDS

Examples of the public arranging for stamping of private stationery with their property or business name imprinted on the reverse.

Waverley is a grazing property about 5 miles west of Oatlands



1912 (November 5) Oatlands to Brownell Bros in Hobart at 1d unsealed printed matter rate.



1912 (November 5) Oatlands to J Walch & Sons in Hobart at 1d unsealed printed matter rate.

Only recorded examples

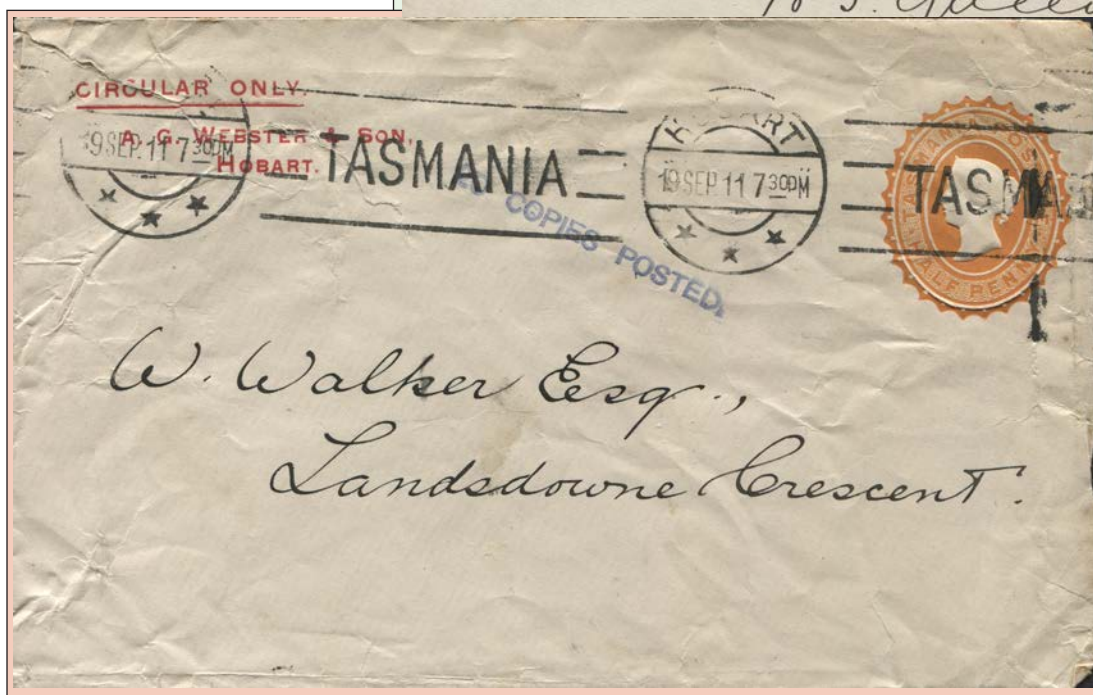
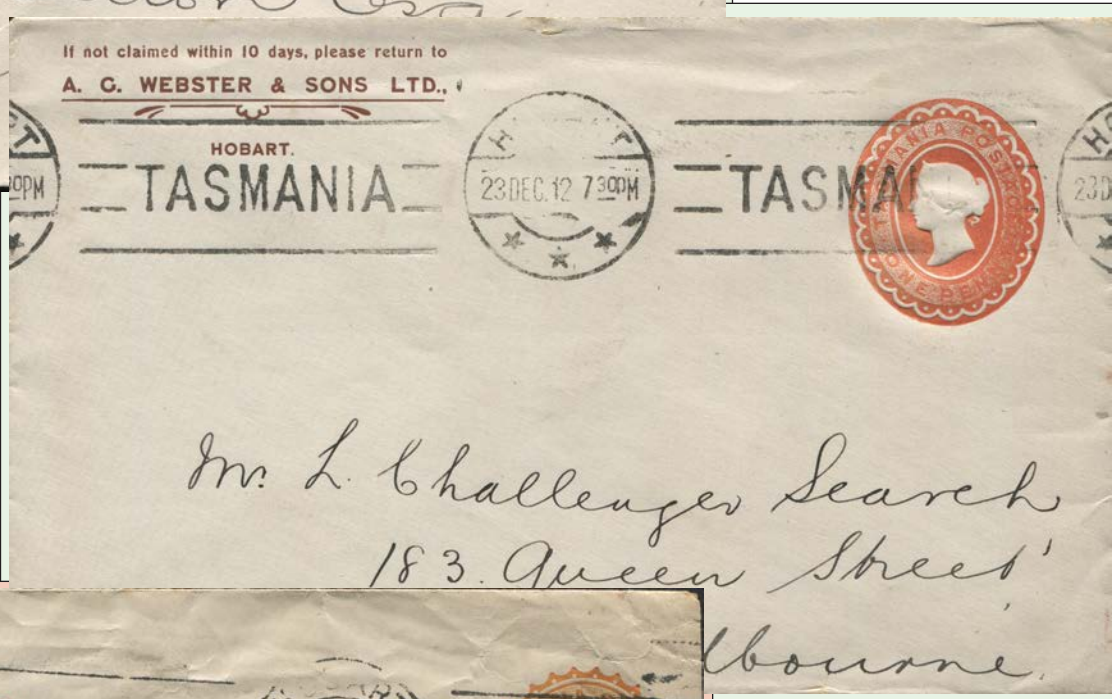
1891-1912 COMMERCIAL USERS OF THE STAMPED TO ORDER SERVICE

1906 - 1912 A.G. WEBSTER & SON - ENVELOPES

This Firm of Woolbrokers and Rural agents were the most prolific users of stamped to order stationery.



1912 (December 23) Hobart to Melbourne at unsealed letter rate. Vermilion shade.



1911 (September 19) used in Hobart at circular rate. of ½d for '20 Posted' introduced on 1 May 1911.

This example stamped for the ½d rate is the only recorded example of a rate that lasted only 19 months for application of Tasmanian stamps until the Commonwealth period introduction of the Kangaroo issues

1891-1912 COMMERCIAL USERS OF THE STAMPED TO ORDER SERVICE

1903 - 1904 A.G. WEBSTER & SON - MCCORMICK ENVELOPES

A range of illustrated envelopes advertising McCormick agricultural equipment were produced. Three advertisements are recorded.



Webster Head Office in Hobart c.1910 (utas).

1903 (October 27) Hobart to Glenorchy at unsealed letter rate. McCormick Hay Rake.



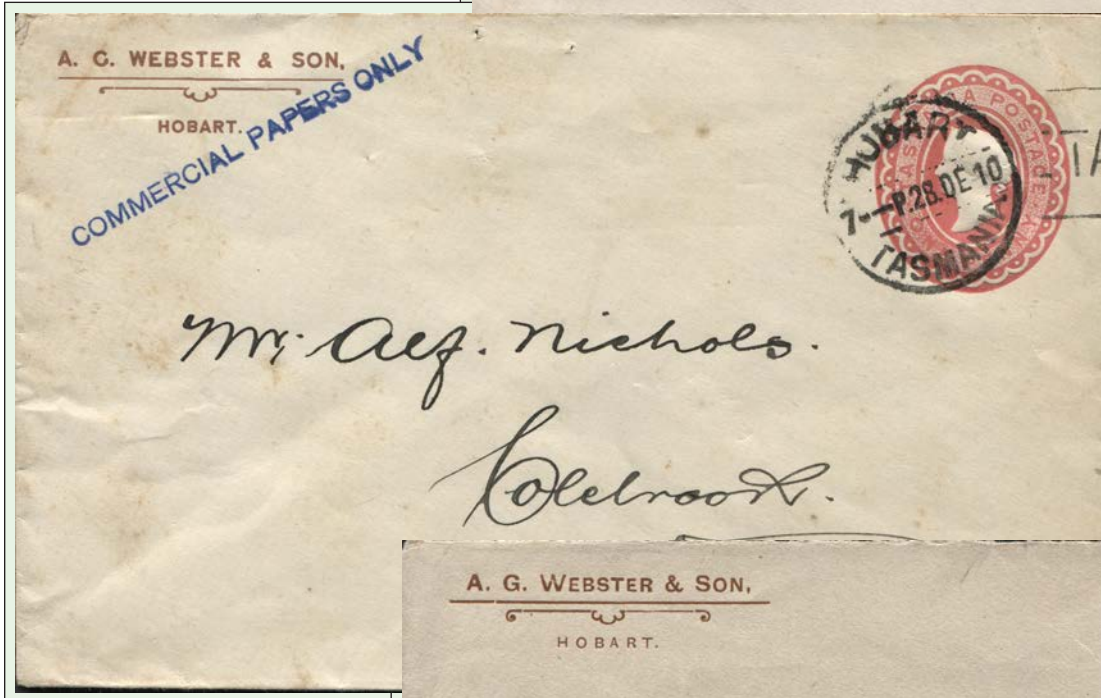
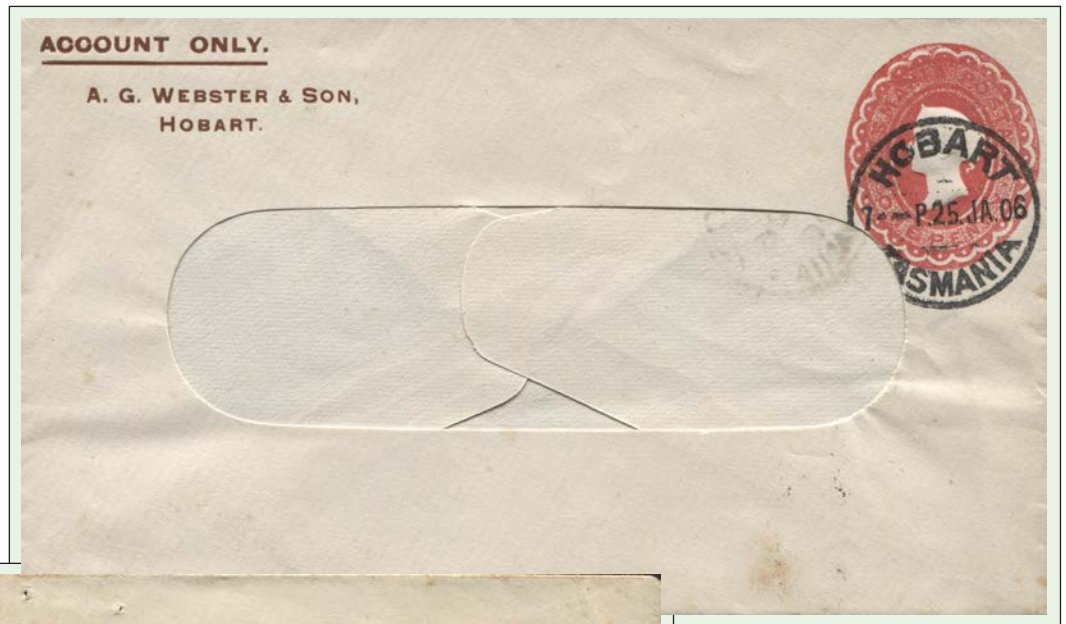
1903 (October 15) Hobart to Glenorchy at unsealed letter rate. McCormick Mower.

1891-1912 COMMERCIAL USERS OF THE STAMPED TO ORDER SERVICE

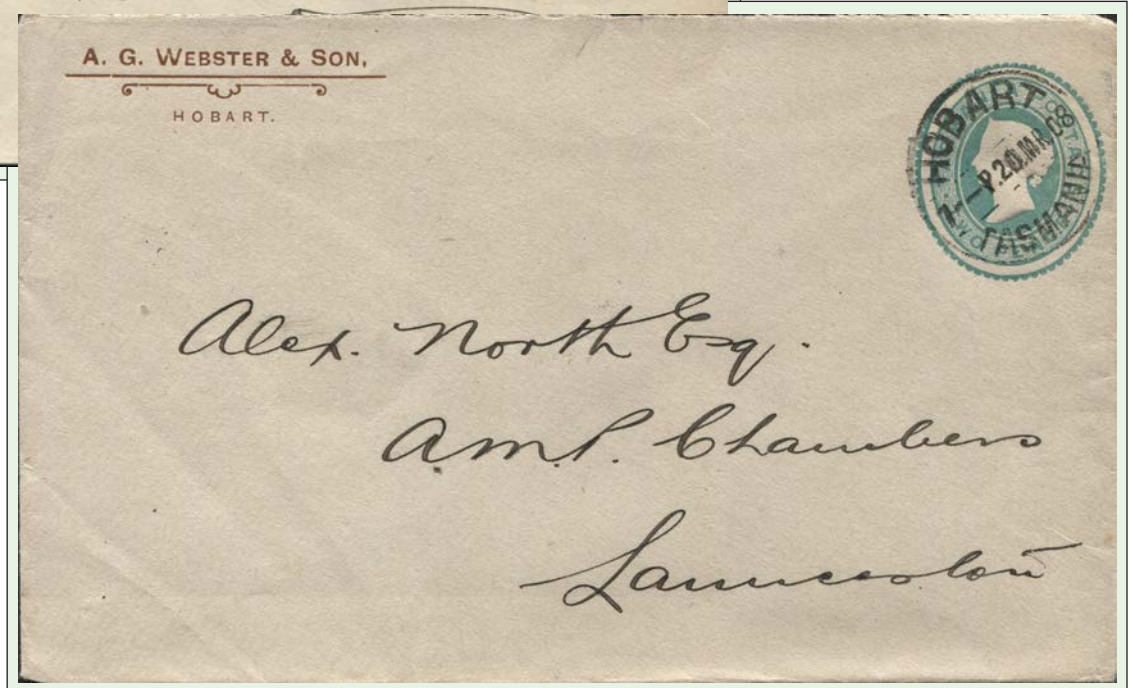
1906 - 1912 A.G. WEBSTER & SON - WINDOW FACED & OTHER ENVELOPES

This Firm of Woolbrokers and Rural agents were the most prolific users of stamped to order stationery.

1906 (January 25) Hobart to Colebrook
window faced 'Account Only' at unsealed
letter rate of 1d. in deep rose red.

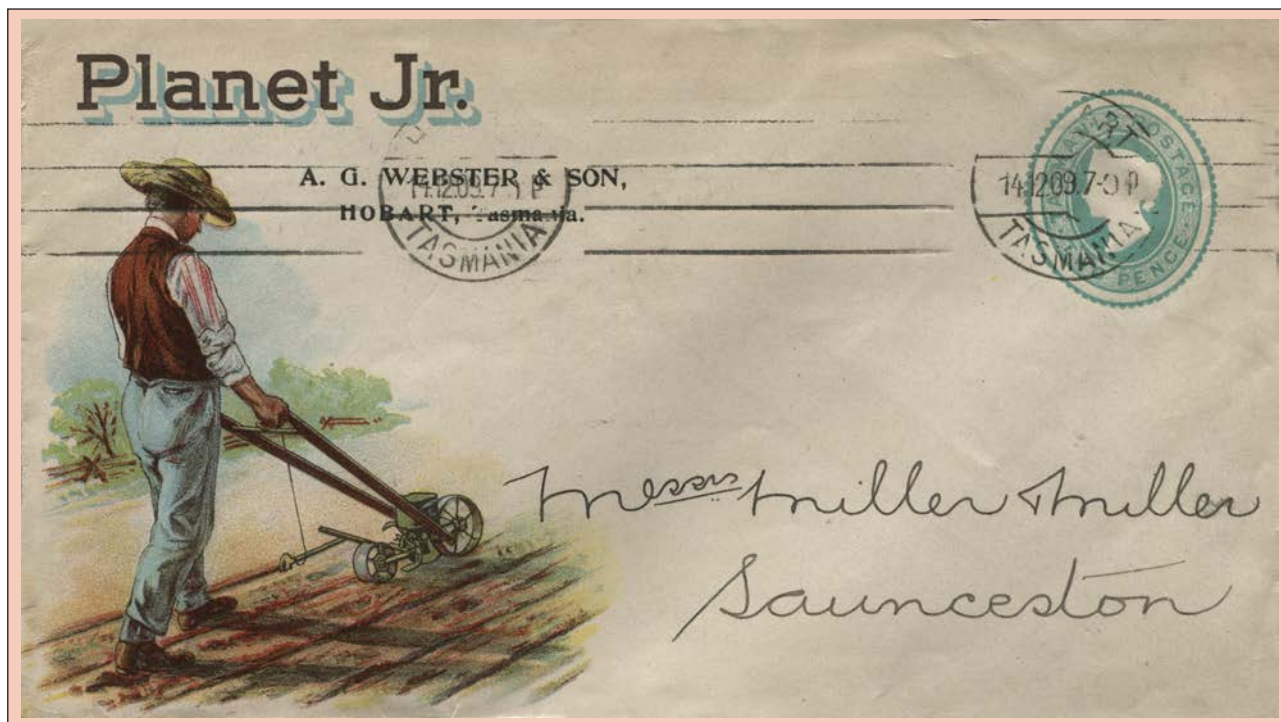


1908 (March 20) Hobart to
Launceston at 2d letter rate



1891-1912 COMMERCIAL USERS OF THE STAMPED TO ORDER SERVICE

1909 A.G. WEBSTER & SON - PLANET JR. ENVELOPES



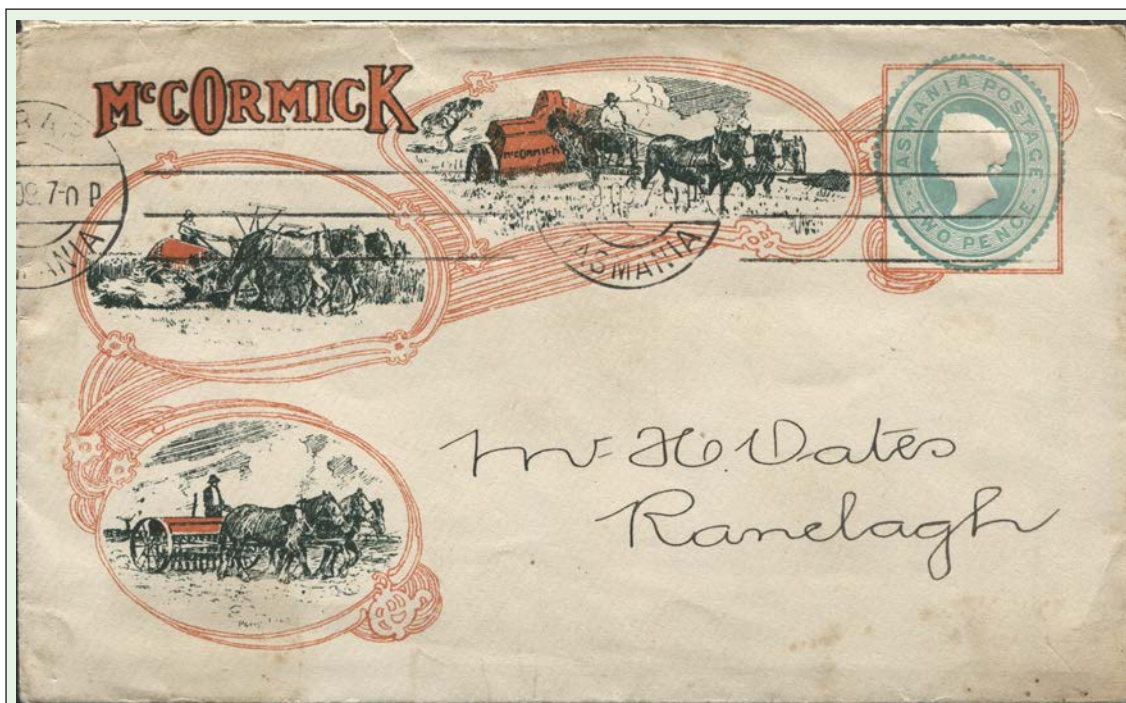
1909 (December 14) Hobart to Launceston at the 2d inland letter rate.



1909 (November 30) Hobart to Sydney at the 2d intercolonial rate showing the reverse of the envelope.

1891-1912 COMMERCIAL USERS OF THE STAMPED TO ORDER SERVICE

1908 - 1909 A.G. WEBSTER & SON - MCCORMICK & OTHER ENVELOPES



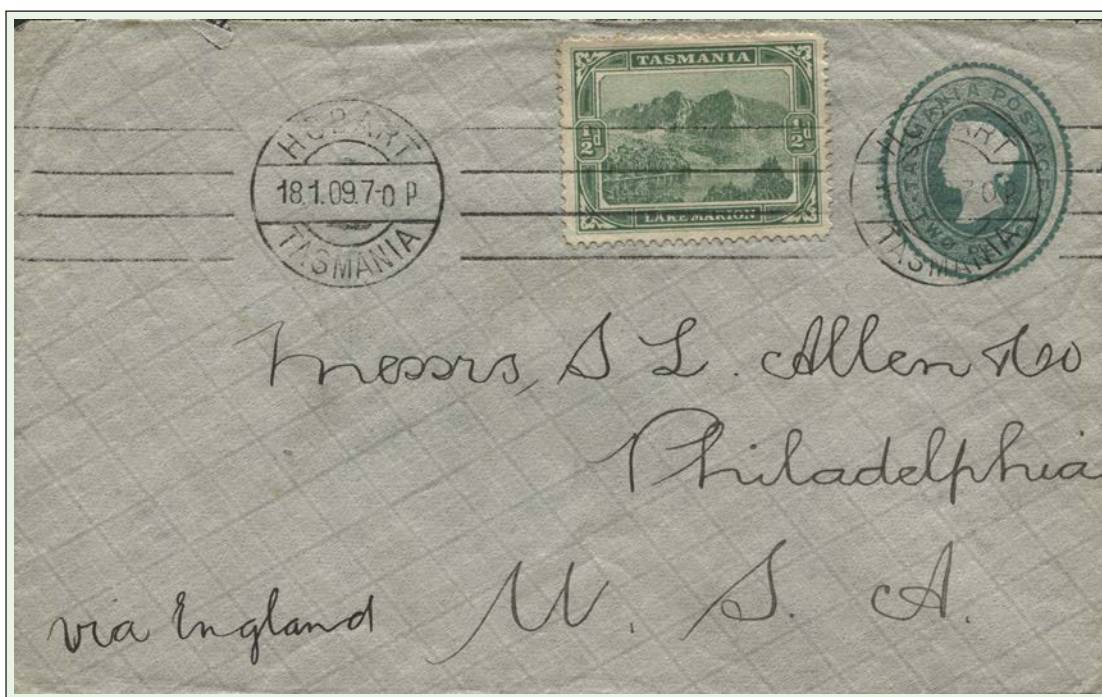
1909 (November 30) Hobart to Ranelagh at 2d inland letter rate. Shows the fourth type of McCormick advertisement



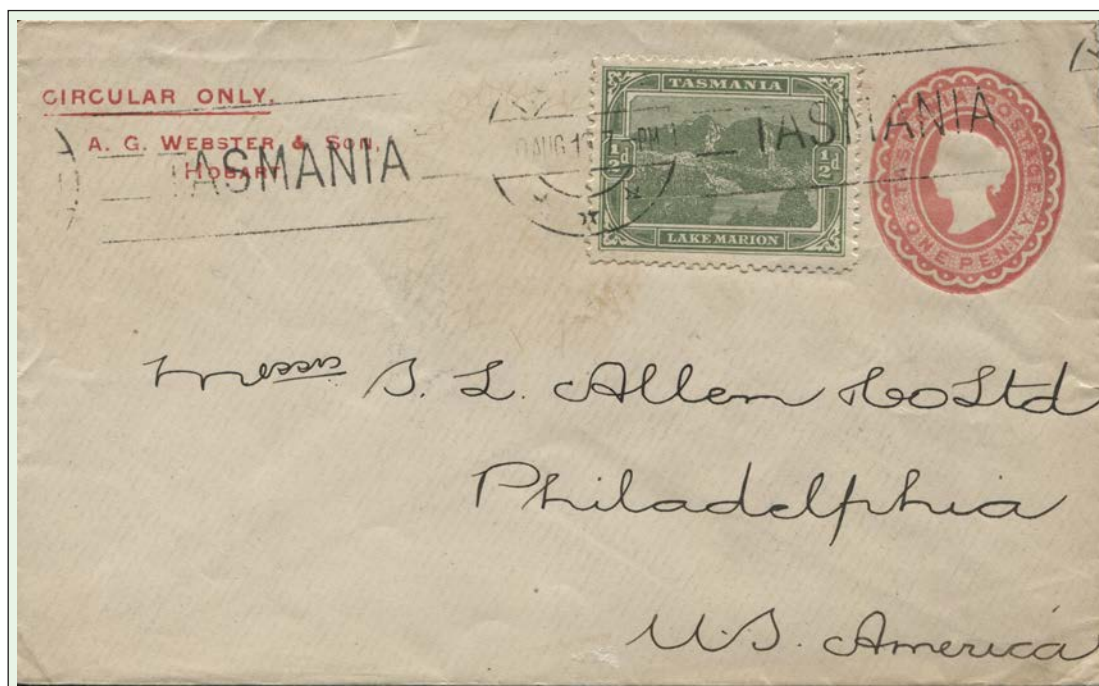
1908 (May 24) Hobart to Triabunna at 2d letter rate. Unclaimed and Return to Sender.

1891-1912 COMMERCIAL USERS OF THE STAMPED TO ORDER SERVICE

1909 - 1911 A.G. WEBSTER & SON - OVERSEAS USE



1909 (January 18) Hobart to Philadelphia at foreign letter rate. A.G. Webster & Son on reverse flap.

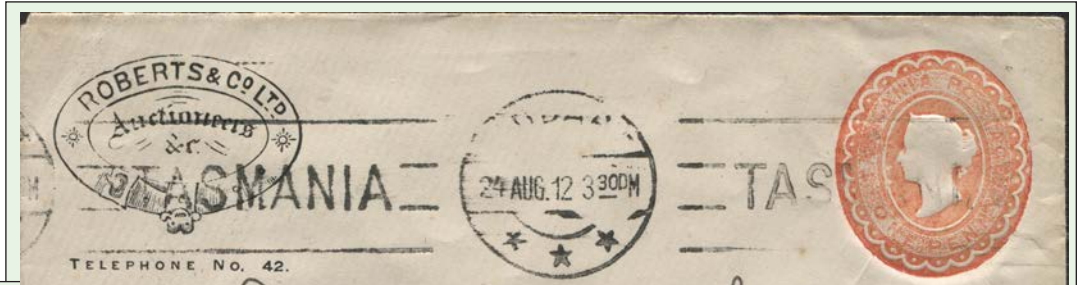


1891-1912 COMMERCIAL USERS OF THE STAMPED TO ORDER SERVICE

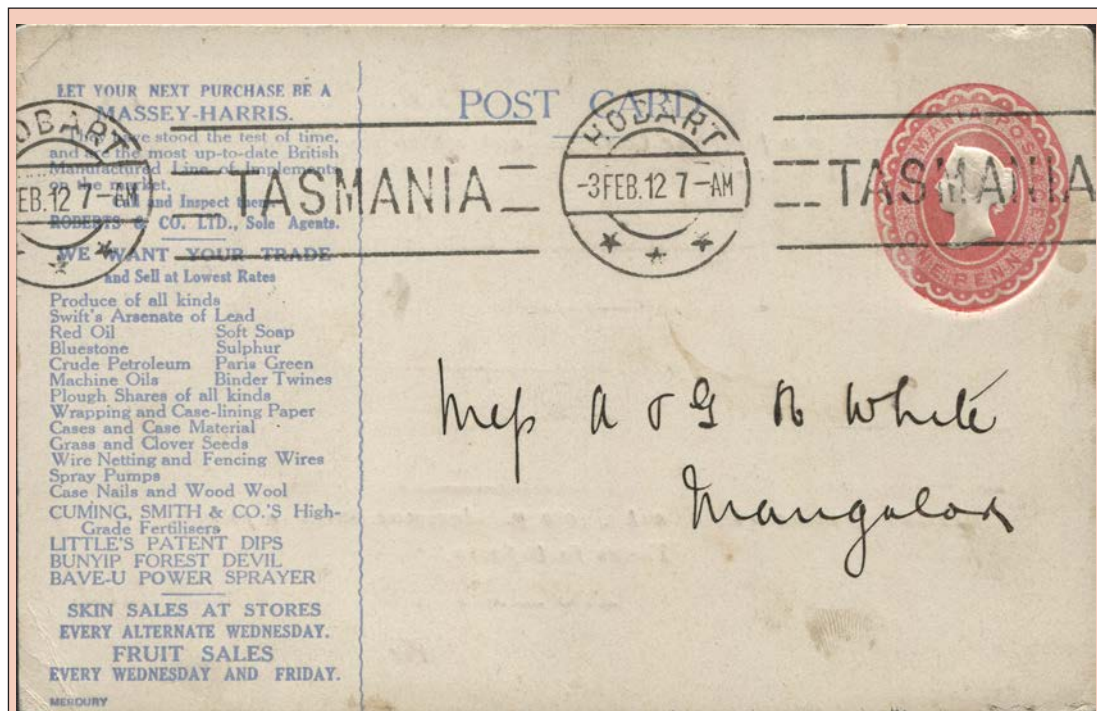
1912 ROBERTS & CO. LTD ENVELOPES & POSTCARDS

Roberts & Co. were woolbrokers and rural auctioneers and suppliers. From 1912 they used printed to private order stationery covering a range of stationery and continued into the Commonwealth period using Kangaroo and George V dies.

1912 (August 24) Hobart to Mangalore
at 1d unsealed letter rate. Shade



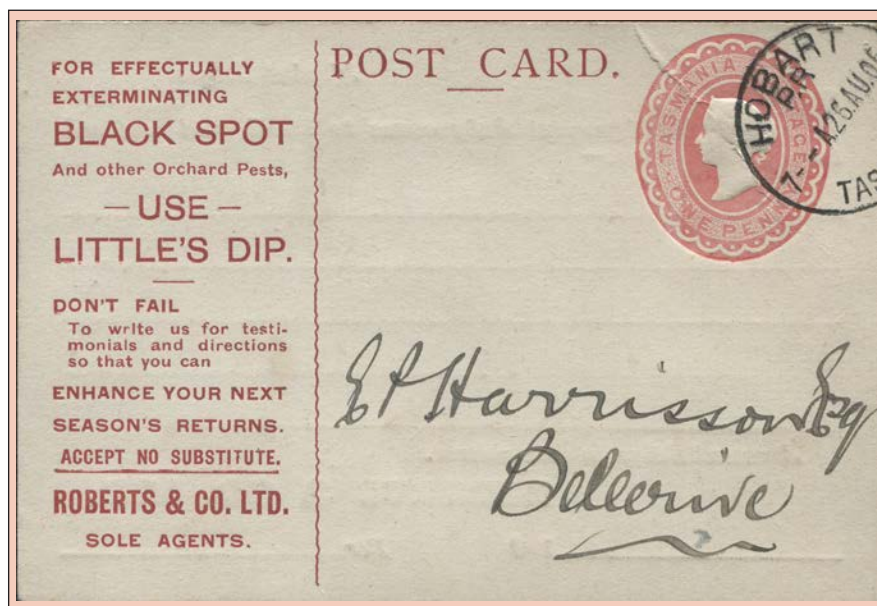
1913 (March 14) Hobart to Sydney
at 1d unsealed letter rate.



1912 (February 3) Massey Ferguson advertising post card Hobart to Mangalore at 1d postcard rate.

1891-1912 COMMERCIAL USERS OF THE STAMPED TO ORDER SERVICE

1905 ROBERTS & CO. LTD - 'USE LITTLE'S DIP' POSTCARDS

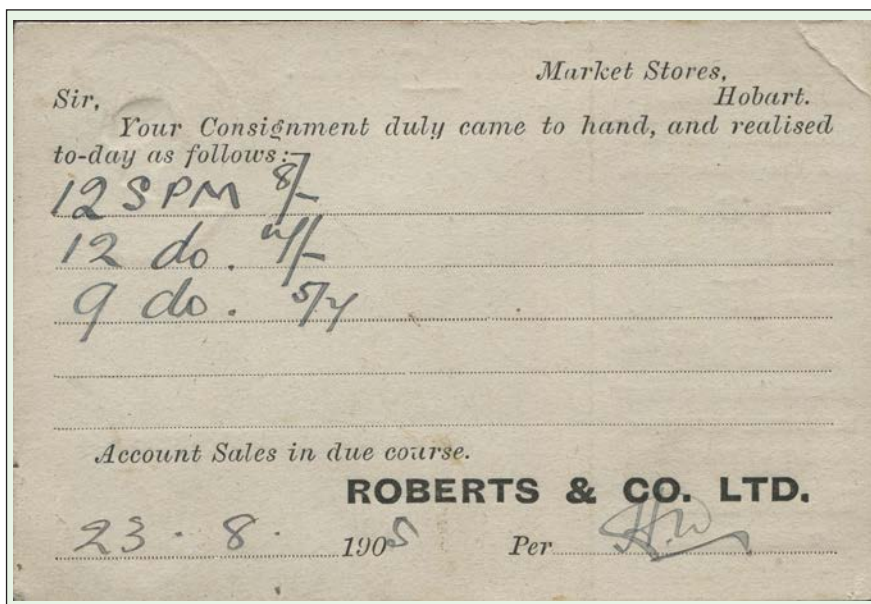


1905 (August 26) Hobart to Bellerive at 1d postcard rate. Pale Rose shade

Little's Fluid and Powder Sheep Dips.

Morris Little and Sons Ltd. exhibit their well-known fluid and powder sheep dips in their own stand. These dips maintain their high reputation amongst the leading sheep-breeders of the Commonwealth, to which the following testimony at the Sydney show bears witness:—No less than two grand champions, two reserved grand champions, five champions, 18 first, 22 second, and 10 third prizes were awarded to users of Little's dips in the merino section. Special interest attaches to the fact that this fluid dip has been increased in strength by 25 per cent. by a new process, so that it may now be diluted by a proportionate amount of water, making it 25 per cent. cheaper to the consumer, as the price remains the same. Morris Little and Co. state that those wishing to use Little's Fluid and Little's Powder Dip in combination will find this improved fluid dip will be of decided advantage, as the two can now be used together for what it formerly cost for the original fluid. The extra quantity of dip the new fluid makes pays for the amount of Little's Powder Dip used.

Full particulars can be obtained from Morris Little and Co. Ltd., 56 Hunter-street, Sydney, and 26 St. James-street, Melbourne, or the Pastoral Finance Association Ltd., Phillip-street, Sydney.

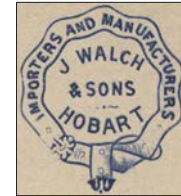


Reverse - 1905 (August 26) Hobart to Bellerive at 1d postcard rate. Pale Rose shade
Only recorded examples

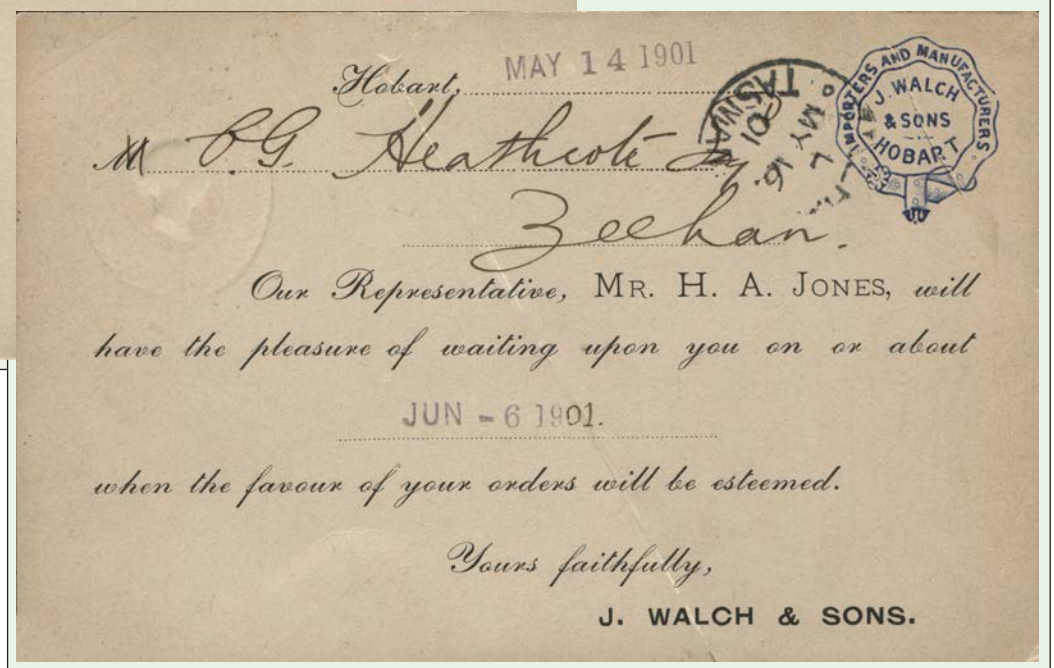
1891-1912 COMMERCIAL USERS OF THE STAMPED TO ORDER SERVICE

1901 J WALCH & SONS TRAVELLERS APPOINTMENT CARDS & FINLAY & WATCHORN SOLICITORS APPOINTMENT CARDS

J Walch & Sons were the largest printers & stationers in Tasmania and made use of the embossed to order service for various stationery needs as well as for stationery for sale to their customers 'postage paid'



J Walch & Sons crest only



1901 (May 16) Hobart to Zeehan at 1d postcard rate advising of attendance of Walch & Sons representative, Mr H.A. Jones.

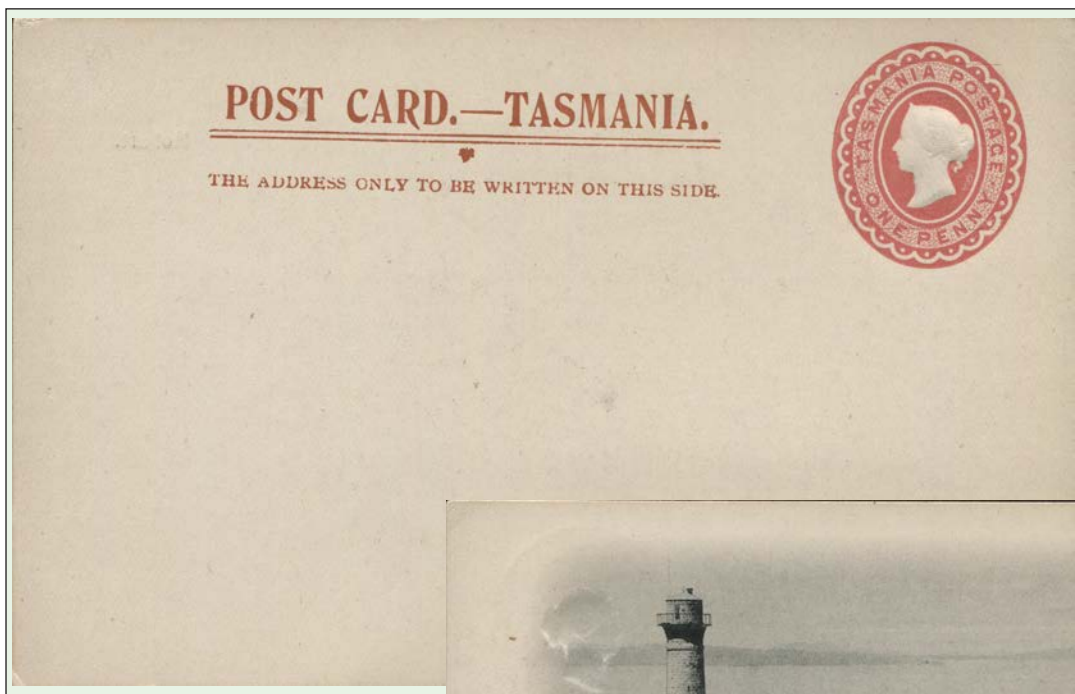


1901 (November 14) Finlay & Watchorn in Hobart at 1d postcard rate requesting a call from a client.

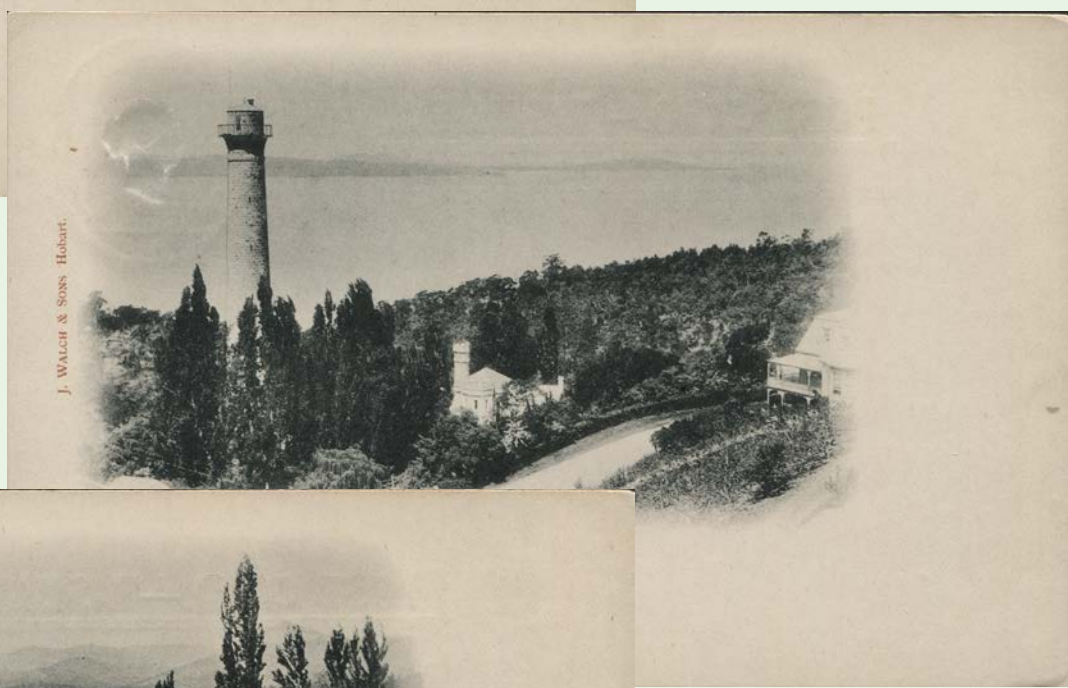
1900 - 1912 STAMPED TO ORDER FOR STATIONERS

1900 J.WALCH & SONS SCENIC POST CARDS

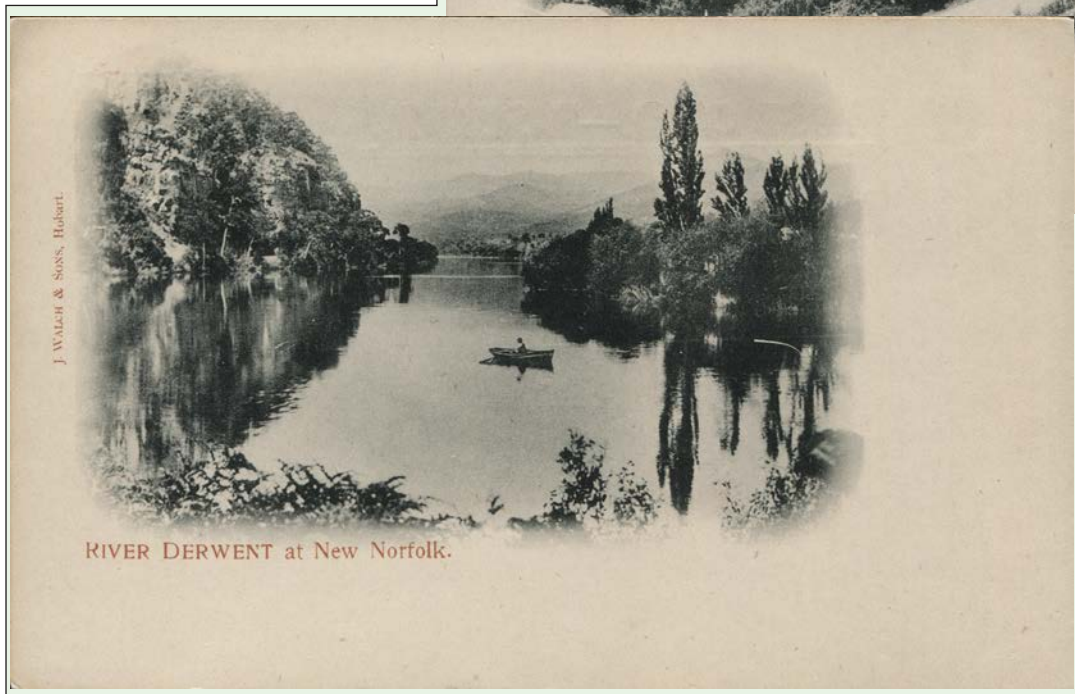
J Walch & Sons produced a set of twelve scenic postcards and arranged for them to be embossed. The date of issue is believed to be around 1909 and these are the only recorded examples of the set. It is possible that this was a sample or proof set only.



Walch's Corner
scene on reverse



The Shot Tower,
Brown's River Road



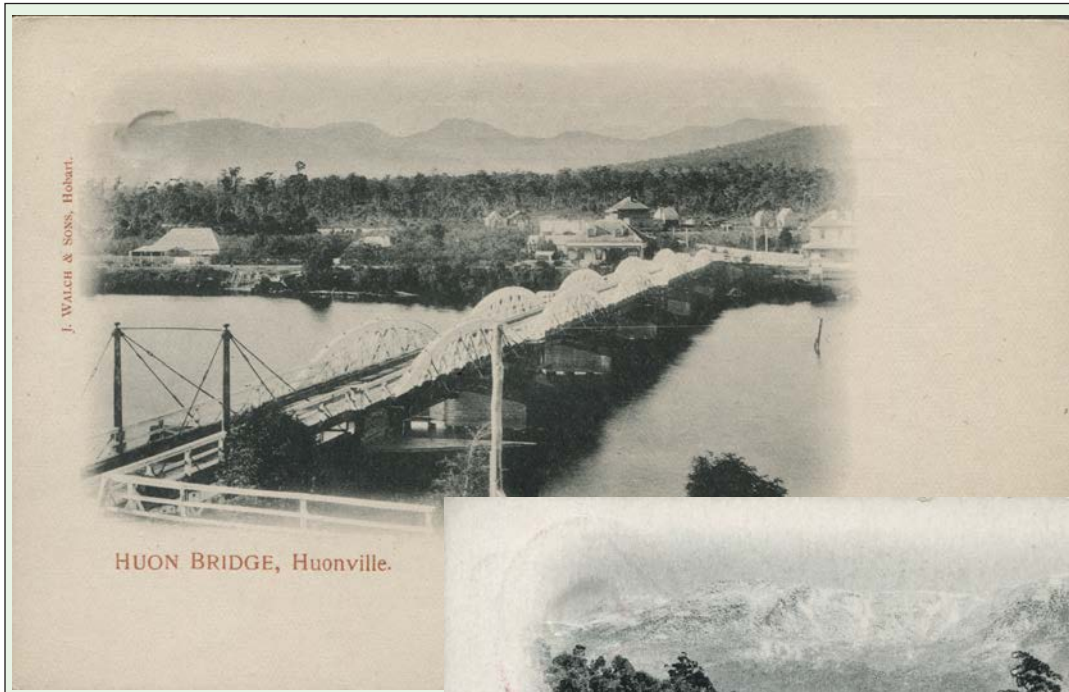
River Derwent at
New Norfolk

Three postcards from the set of twelve produced.

1900-1912 STAMPED TO ORDER FOR STATIONERS

1900 J.WALCH & SONS SCENIC POST CARDS

J Walch & Sons were Printers, Stationers & Booksellers. They produced & arranged embossing of stationery for sale to customers and tourists at 9d per packet of 12.



*Huon Bridge,
Huonville*



*Mount Wellington
Whiter stock*

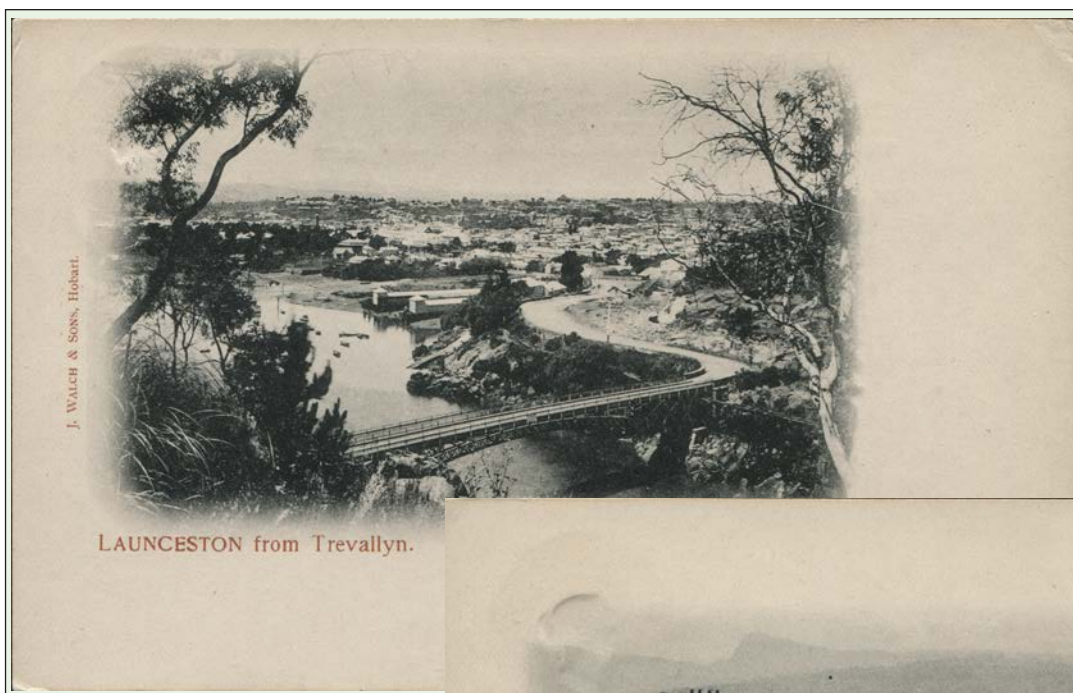


Cape Raoul

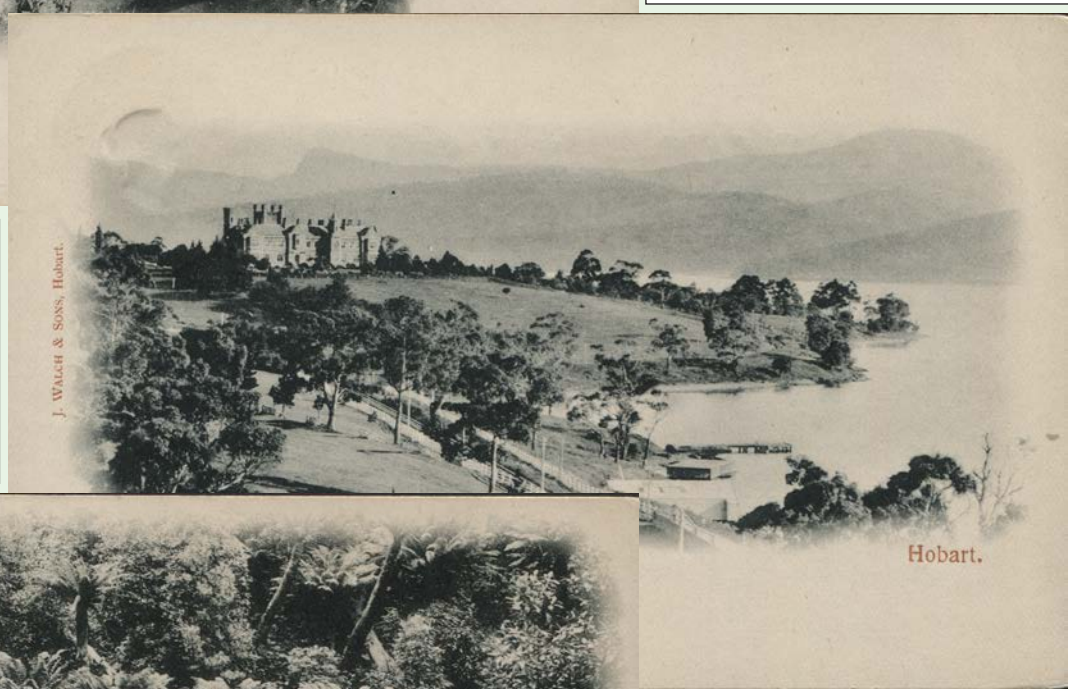
Three postcards from the set of twelve produced.

1900-1912 STAMPED TO ORDER FOR STATIONERS

1900 J.WALCH & SONS SCENIC POST CARDS



Launceston from
Trevallyn



Government House



Fern Tree Bower

Three postcards from the set of twelve produced.

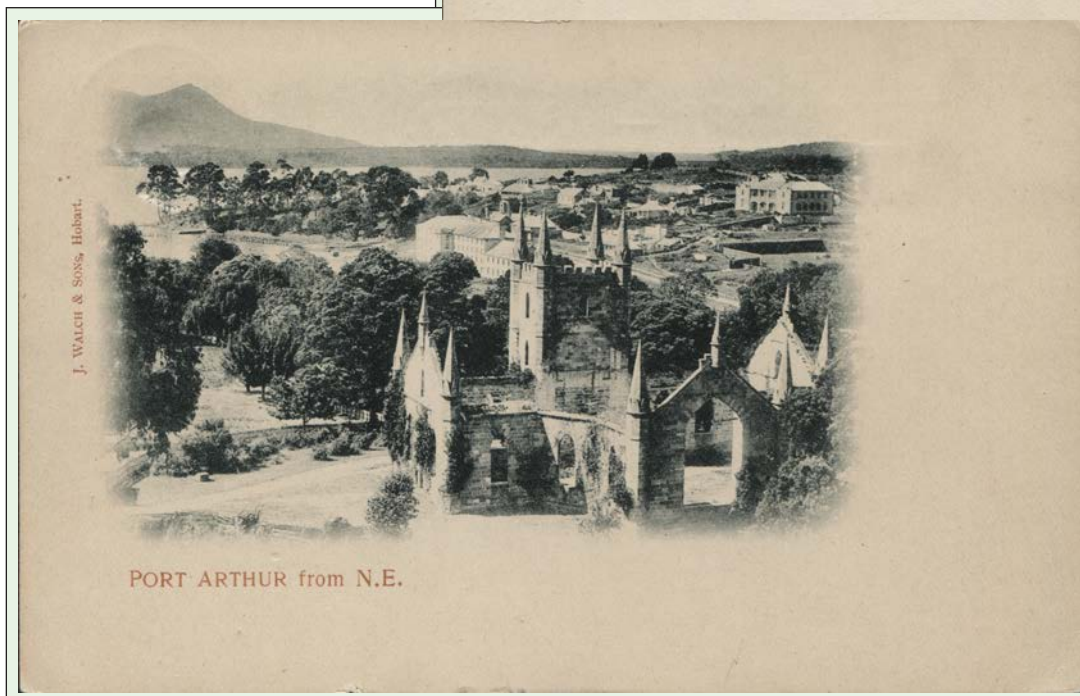
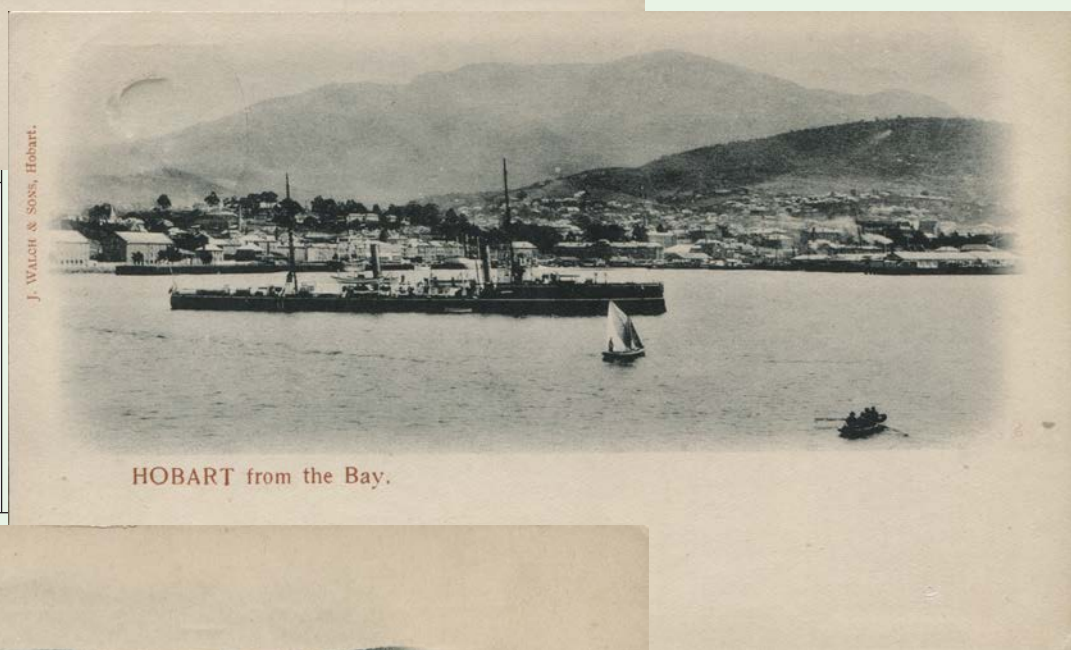
1900 -1912 STAMPED TO ORDER FOR STATIONERS

1900 J.WALCH & SONS SCENIC POST CARDS



Tree Ferns

Hobart from
the Bay



Port Arthur
from N.E

Three postcards from the set of twelve produced.