

1891 "TRUE SHOT" POSTAL WRAPPERS

[illegible]

Left panel

Right panel

P. A. MILLER, CHEMIST.
Pharm. Medicines, Prescriptions, Toilet Soaps, and Kosmetics.
 Photographs Good.
 Tourists Portable Camera.
 Students Set of Photographic Apparatus.
 Toilet Soaps, Soaps and Kosmetics.

A. P. MILLER,
CORNER MEYER AND LAFAYETTE STREETS, BROOKLYN.
 KEHRN, STRAIN, NEW YORK CO.
 Shoes and Manufactory
 4 DAVEY STREET, HOBART.

ASK YOUR GROCER FOR THE
"O'CLOCK TEA."
It is perfect for all your needs.
 TAMMAMAN DEPOT
 11 Elizabeth Street, Hobart, and by Elizabeth Street, Launceston.

R. MILLER & CO.,
 SOAP, CANDLE AND CHEMICAL MANUFACTURERS,
 Elizabeth Street, Launceston, Macquarie Street, Hobart.

THE
CASCADE BREWERY COMPANY, LIMITED.

BULK BEERS:
 STUNTING ALE, STROONG ALE, STOUT,
BOTTLED BEERS:
 LIGHT SPARKLING ALE, BITTER ALE, STROONG ALE, BOTTLED STOUT

NOEL WHITE & CO.
 CLOTHES AND CARPET WAREHOUSEMEN,
 PRINCE WILLIAM STREET, LEADING CLOTHS, FURNITURE, MILLINERY, MANTEL, COSTUME, SILKS, ETC.

EMPEROR HOBART.
 CLOTHING MAKING ESTABLISHMENT.

C. E. KNIGHT & CO.,
 JAM MANUFACTURERS,
 HOBART.
SOAP, CANDY, AND GENERAL REFRIGERATION.

L. USMAN AND CO.,
 JEWELLERS & IMPORTERS,
 Stationery, Cutlery, Jewellery, Glasses, Clocks, Crockery, Musical Instruments, Optical Goods, Perfumery, Stationery, Electro-Plate, Druggists and Tobacconists Stationery, Patent Machines, Sewing, Toys, &c.
 Sole Agents for "Dial," "Crown" Cameras and Sewing Machines, and WATERPROOF WATCHES.
Orders sent for every description of English, Scotch and Continental Mercantile.

THE
"ENGLISH & AMERICAN" WATCH REPAIRING CO.

100 LIVERPOOL STREET, AND
 47 ELIZABETH STREET, HOBART.

Four Watch Cleaned 4d. 6d.
"BLUE" HOUSE,
 THE NEW COCKNEY BIRD.
 100 LIVERPOOL STREET.
 Direct Importers Chickens, Poultry, and Outfry.
WHOLESALE PRICES.
 Country Visitors save travelling expenses by buying their Outfry at
BLUE HOUSE.

102 LIVERPOOL STREET, HOBART
MRS. McLOUGHLIN,
 85 ELIZABETH STREET, Importer,
 Manufacturers and Supplier of Furnishings, Bed, Matting, Linen, Vestments, Linoleum, &c. &c. &c.
 Sole Importation.
RAY STREET, HOBART.
 85 ELIZABETH STREET

Deskings, Engraving, &c., Company's Seals, Blue Plates.

Central panel

The Most Effective and Cheapest Advertising Medium
extant. Issued in series of 10,000.

SOLE PROPRIETORS:

THE TASMANIAN ADVERTISING CO., HOBART.

For spaces to let apply to Secretary.

V. & J. BENTINE BROS.
PHOTOGRAPHERS.

45 ELIZABETH STREET, HOBART (OPPOSITE BANK
V.D.L.)

Cabinet Portraits, any style, 3 for 6s. Carte de Visite, any style, 6 for 4s., finished either in Sepia

THE ONLY TEA IN THE COLONY WORTH
DRINKING IS

THE "LION" BRAND,

Superior to any imported Teas offered to the
Public. SOLE PROPRIETOR—

C. H. WILLIAMS, TEA MERCHANT.



Orange

1891 "TRUE SHOT" POSTAL WRAPPERS

[illegible]

The "True Shot" Postal Wrapper

SOLE PROPRIETORS:

VALENTINE BROS.
PHOTOGRAPHERS,

Cabinet Portraits, any style, 3 for 6s. Carte de Visite, any style, 6 for 4s., finished either in Sepia

THE "LION" BRAND,

Superior to any imported Teas offered to the
Public. SOLE PROPRIETOR—
C. H. WILLIAMS. TEA MERCHANT

JONES' MARKING INK.
INDISPENSIBLE FOR BLACK.

Requires no heat, dyes and colors like printer's ink, and is used with
brushes, pens, &c. JOHN FRASER, ABERDEEN.

McGRUBB AND ELTHAM,
ARGYLE STREET, HOBART,
GENERAL MERCHANTS & COMMISSION AGENTS,
HAY, CORN, CHAFF, DRAIN PIPES, Etc.
ANDERSON'S CRITERION HOTEL,
LIVERPOOL STREET, HOBART.
THE MOST POPULAR HOTEL IN HOBART.
BEST ACCOMMODATION FOR VISITORS. BEST OF LIQUORS.
"Heavenly" Cigars a Specialty. All Sporting information obtainable.

TASMANIAN STEAM LAUNDRY & DYE WORKS,
GLAISTONE OR GEORGE STREETS, SEAR WHARF, HOBART.
All descriptions of Laundry Work undertaken; also Dyeing
and Cleaning.

LENNOX & AIKEN, PROPRIETORS,
BROWNELL'S BUILDINGS, LIVERPOOL STREET, HOBART.

L. FAIRTHORNE AND SON,
(Late Lithgow and Co's)
IMPORTERS OF PURE DRUGS, CHEMICALS AND SUNDRIES.
Purveyors to J. & FAIRBANKS, G. S. JOHNSON.

J. R. FRYER & CO. HOBART,
Wool, Grain & Hide Merchants,
Purchaseurs of all classes of Shins and Hides. Agents for Howard Smith's line of Steamers,
The East Coast — as — "Riversdale," "Schomberg" "Victory" and "Carr Point."
Riches Outrigger, Barclay, & Co.

SOLE MANUFACTURERS TASMANIAN PACKET HOPS.

C. W. D. PEACOCK,
FRUIT EXPORT GENERAL, 14 NEW WHARF, HOBART.
Residential Agency England, Australia, India, China, Japan, Persia, &c. Fruit consigned to his Agent's care may be sold by him at Special or Wholesale Prices. Freight forwarded to all Ports.
Original Account Sales retained. Storage Free. Charges collected.

Note Address — W. D. PEACOCK, 14 New Wharf.

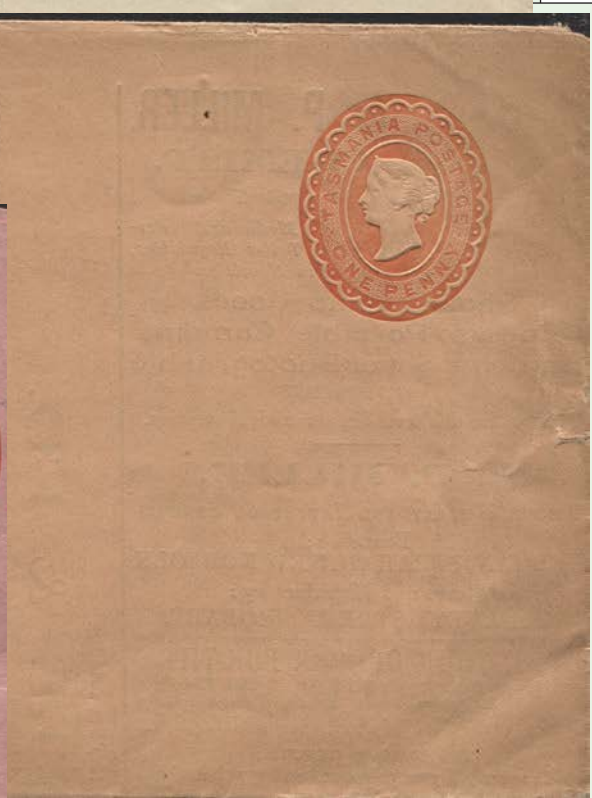
FRUIT! H. TOMLINSON & CO.,
Wholesale Fruitreisers, Franklin Wharf (Near T.S.N. Co.)
IMPORTERS AND EXPORTERS.

68 Fruit forwarded to any part of the Island. Fruit Shipments made up to and to the best Agent on Commission.

Rear panel



Pink - **only recorded example**

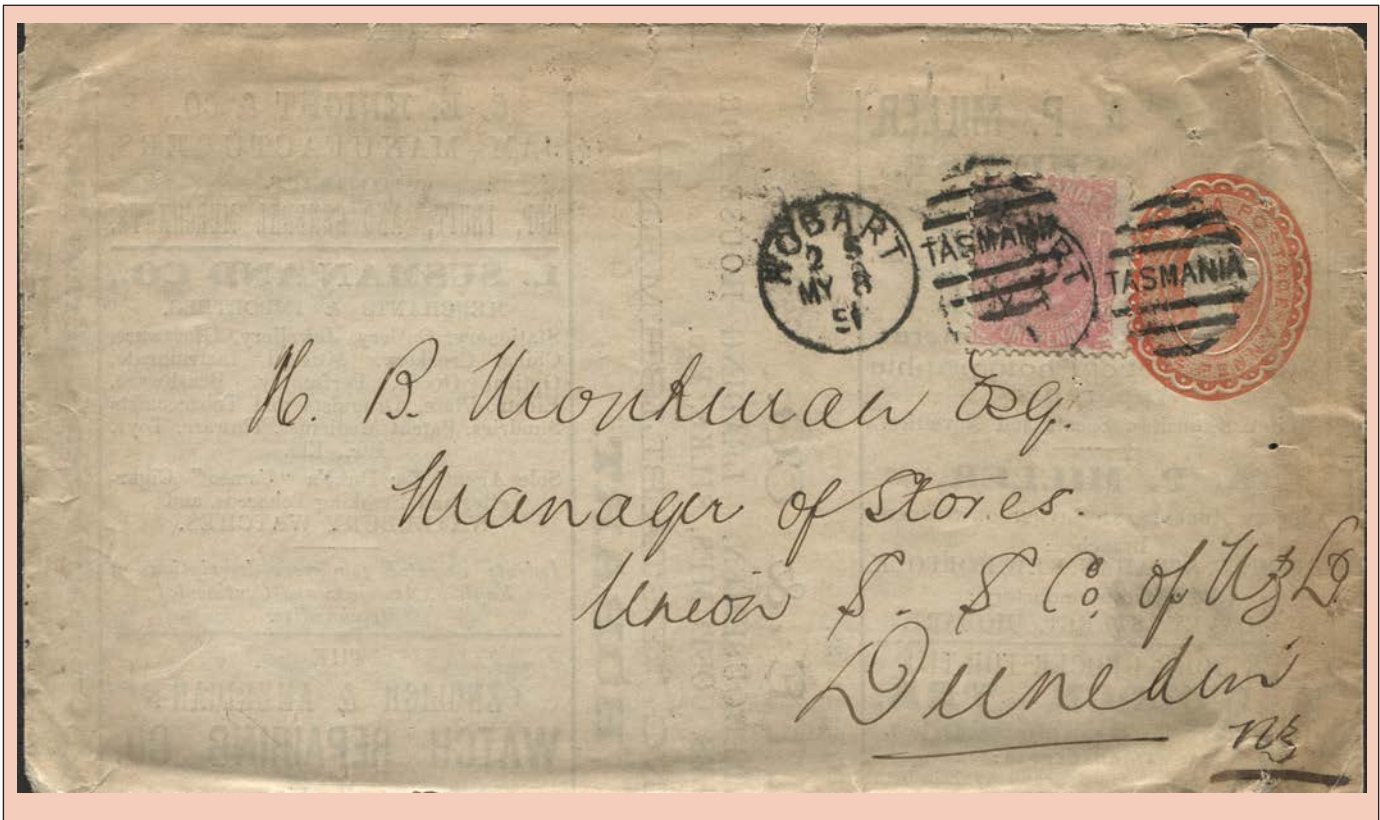


Cream

1891-1912 COMMERCIAL USERS OF THE STAMPED TO ORDER SERVICE

1891 "TRUE SHOT" POSTAL WRAPPERS

The Tasmanian Advertising Co. of Hobart produced a folded advertising lettersheet containing a wide selection of paid advertisements.



1891 (May 8) Hobart to Dunedin uprated with 1d to meet the intercolonial rate. **Only recorded used examples.**

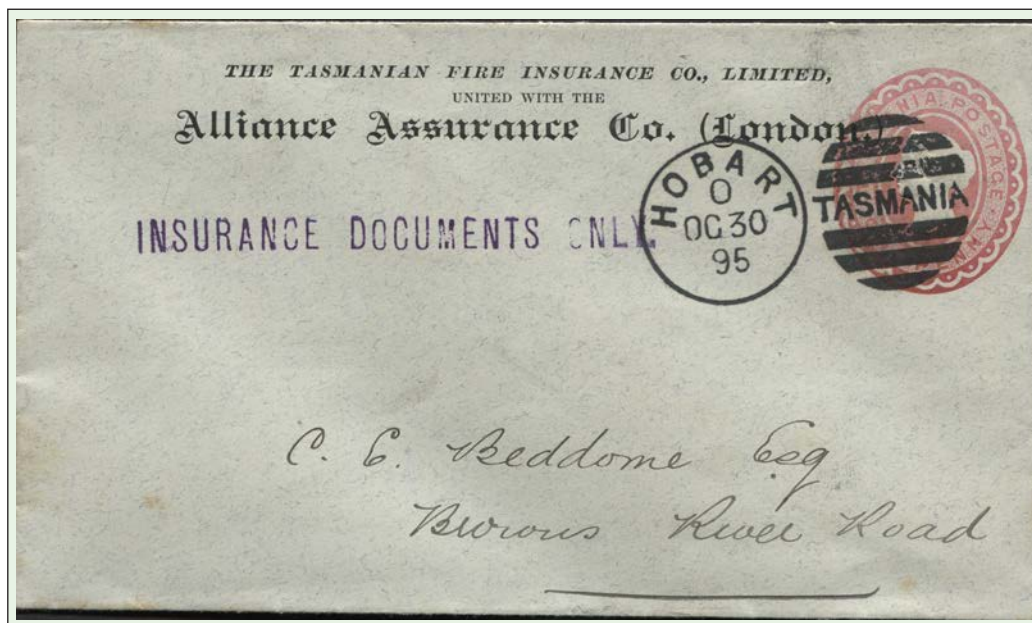


1894 (December 24) Hobart to Adelaide endorsed "Photo Only", to ensure carriage at the 1d concessional rate.

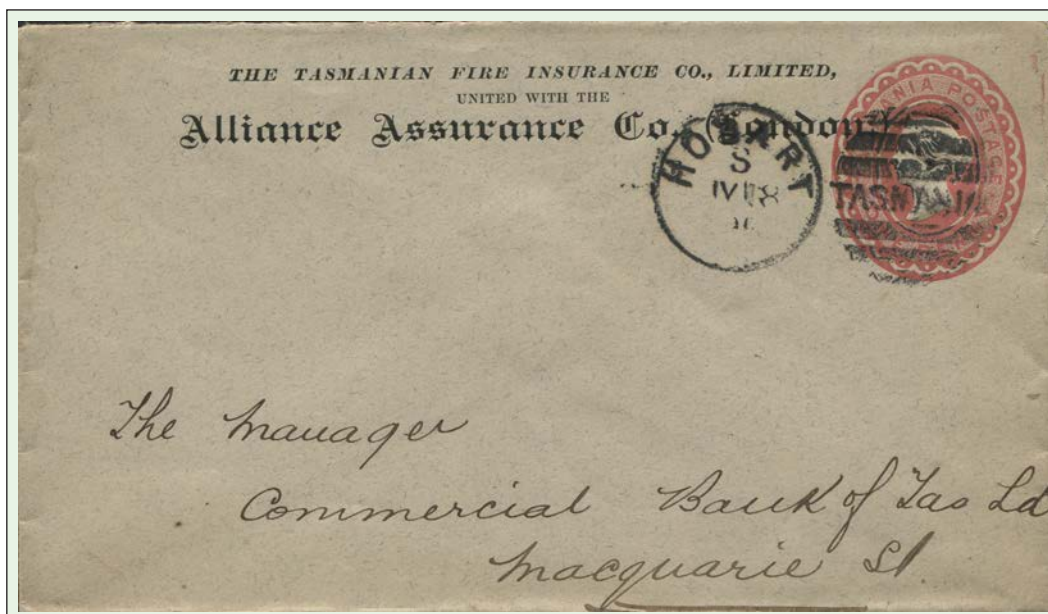
1891-1912 COMMERCIAL USERS OF THE STAMPED TO ORDER SERVICE

1895 - 1896 ALLIANCE ASSURANCE CO. (LONDON)

No records have been located listing those businesses that accessed the stamped to private order service. Previously unrecorded users are still being discovered.



1895 (October 30) Hobart to Browns River at printed matter rate.

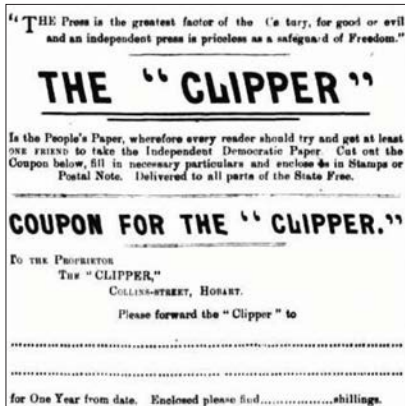


1896 (July 18) Used in Hobart at printed matter rate. Buff envelope.

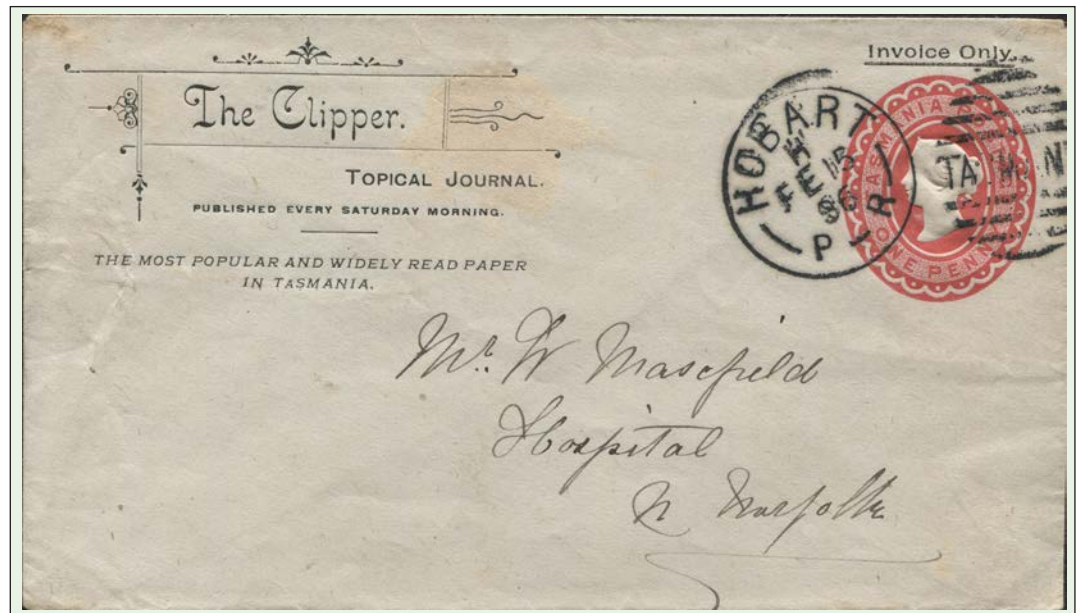
1891-1912 COMMERCIAL USERS OF THE STAMPED TO ORDER SERVICE

1896 THE CLIPPER TOPICAL JOURNAL & 1903 THE GRAND LODGE OF TASMANIA

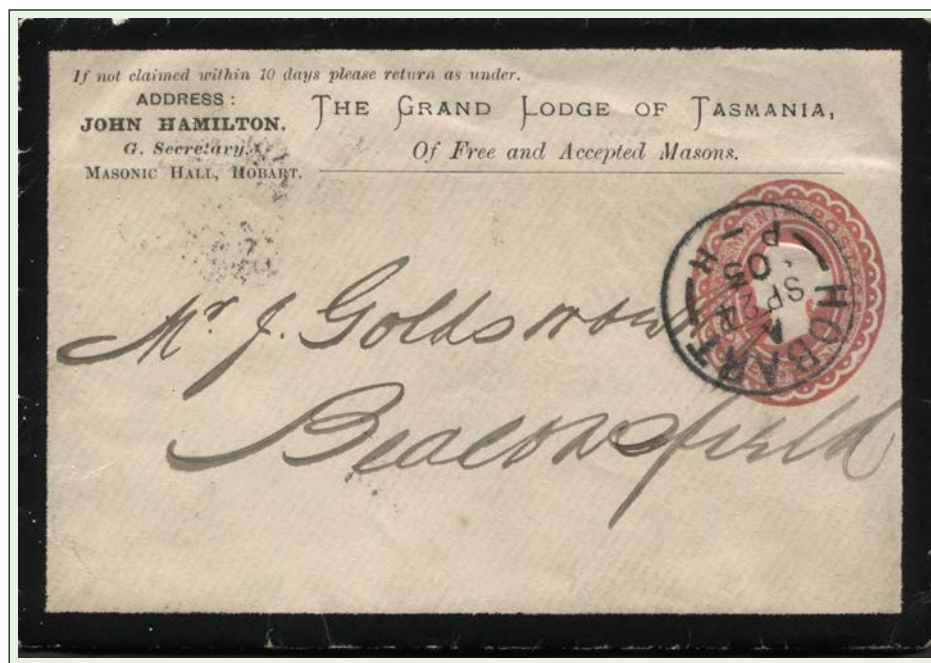
Apart from the Pastoral Companies, stationery for commercial Firms and Associations accessing the stamped to order service is scarce.



1902 subscription advertisement



1896 (February 15) Hobart to New Norfolk unsealed letter rate for The Clipper Topical Journal. **Only recorded example.**



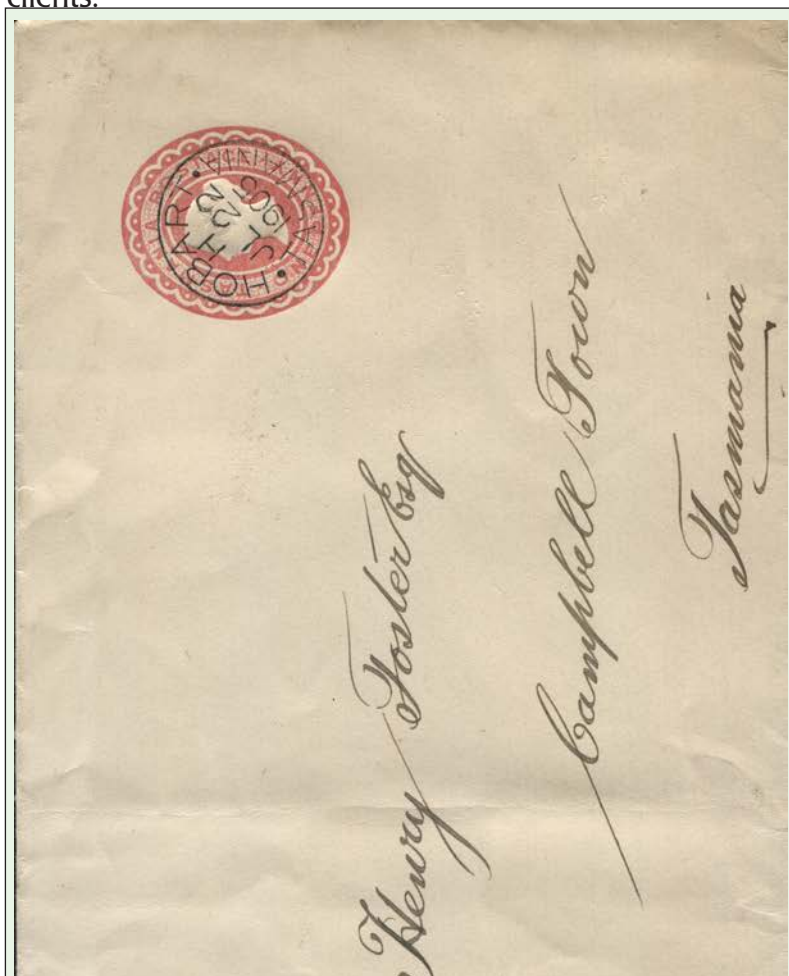
1903 (September 24) Hobart to Beaconsfield unsealed letter rate for The Grand Lodge of Tasmania. **Only recorded example.**

'The Clipper' was a labor-oriented journal published from 1893-1909. It styled itself as "A weekly journal of topical Incident, Racy Comment and News" The Editor was James Paton and it was acquired in 1903 by Melbourne journalist Walter Woods. The Grand Lodge of Tasmania of Free and Accepted Masons was formed in 1890 from representatives of seven English, seven Irish and five Scottish Lodges.

1891-1912 COMMERCIAL USERS OF THE STAMPED TO ORDER SERVICE

1895 & 1905 PERPETUAL TRUSTEES, EXECUTORS & AGENCY CO. OF TASMANIA

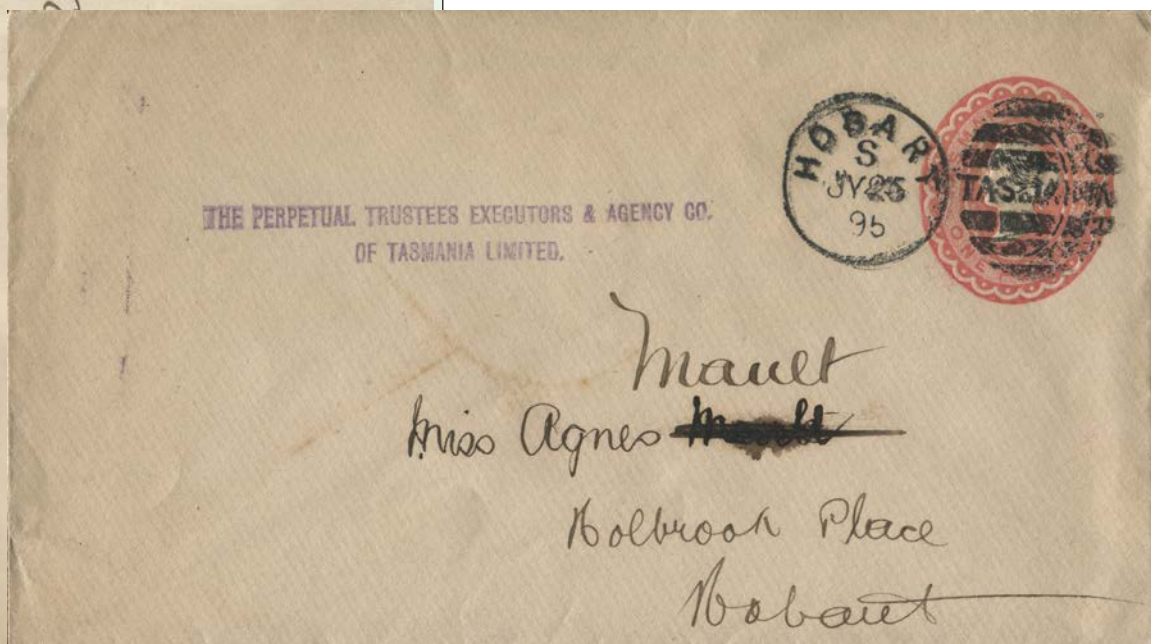
Perpetual Trustees were also significant users of embossed to order stationery in their communications with clients.



Crest on reverse of long envelope

1905 (July 22) used Hobart to Campbell Town at unsealed letter rate.

1895 (July 25) used in Hobart at town letter rate handstamped for Perpetual Trustees.

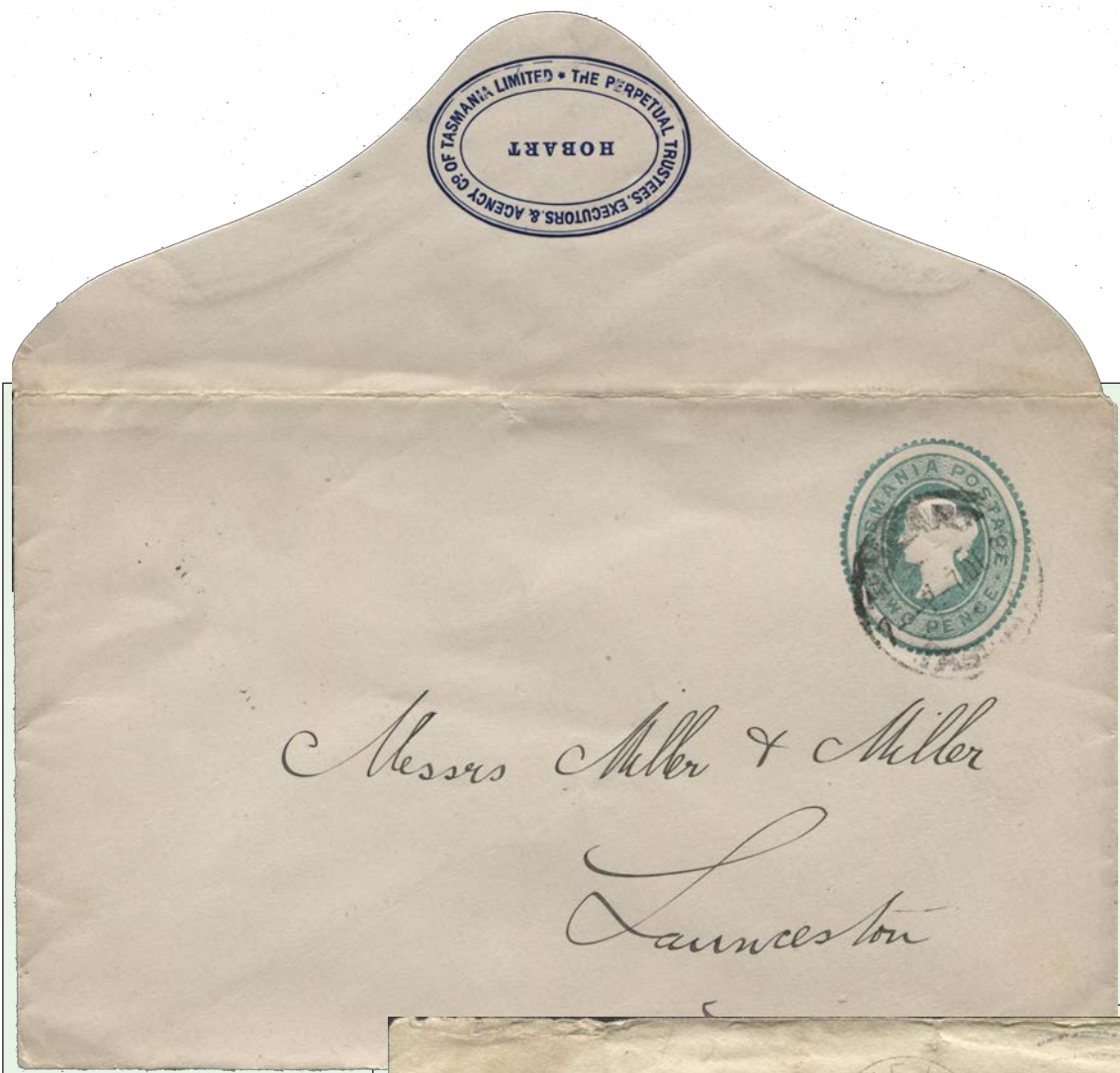


Perpetual Trustees & National Executors of Tasmania Ltd was established in 1887 and was based in Hobart operating as Trustees and Estate Managers for 116 years until merging with their Northern Tasmanian equivalent.

1891-1912 COMMERCIAL USERS OF THE STAMPED TO ORDER SERVICE

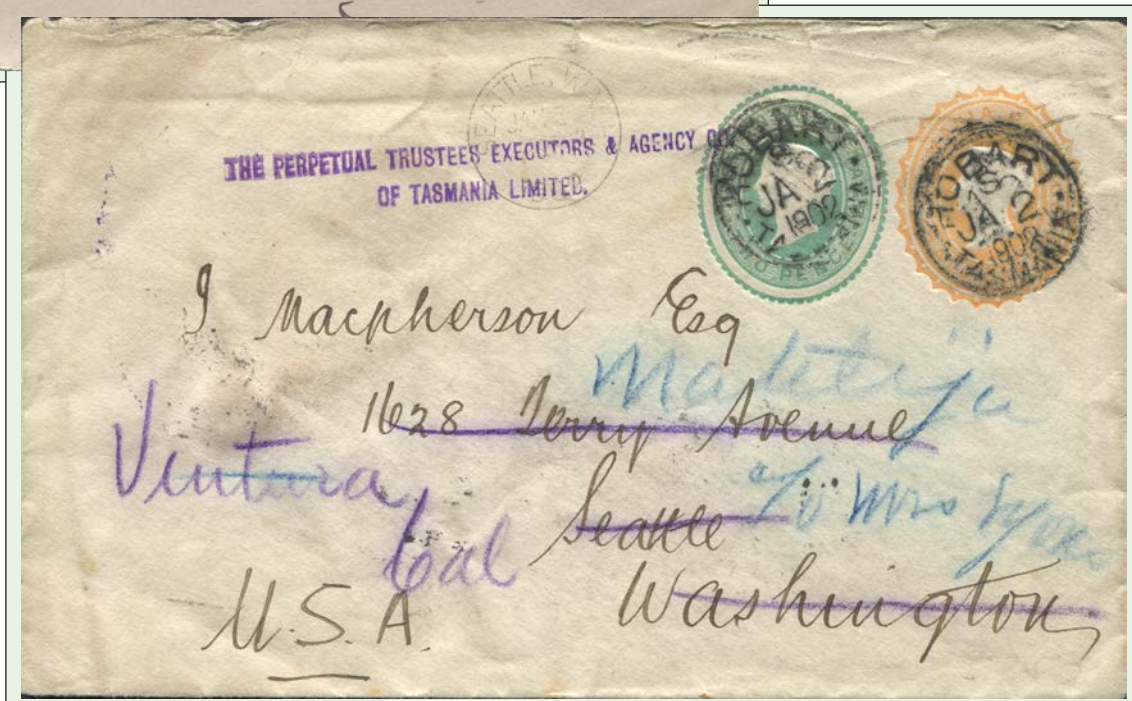
1906 & 1902 PERPETUAL TRUSTEES, EXECUTORS & AGENCY CO. OF TASMANIA

In January 1894 the rules on stamping envelopes were altered to allow the use of the 2d die as well as the ½d and 1d which had been permitted since the beginning of 1891. The minimum quantity for each order was at that time 480.

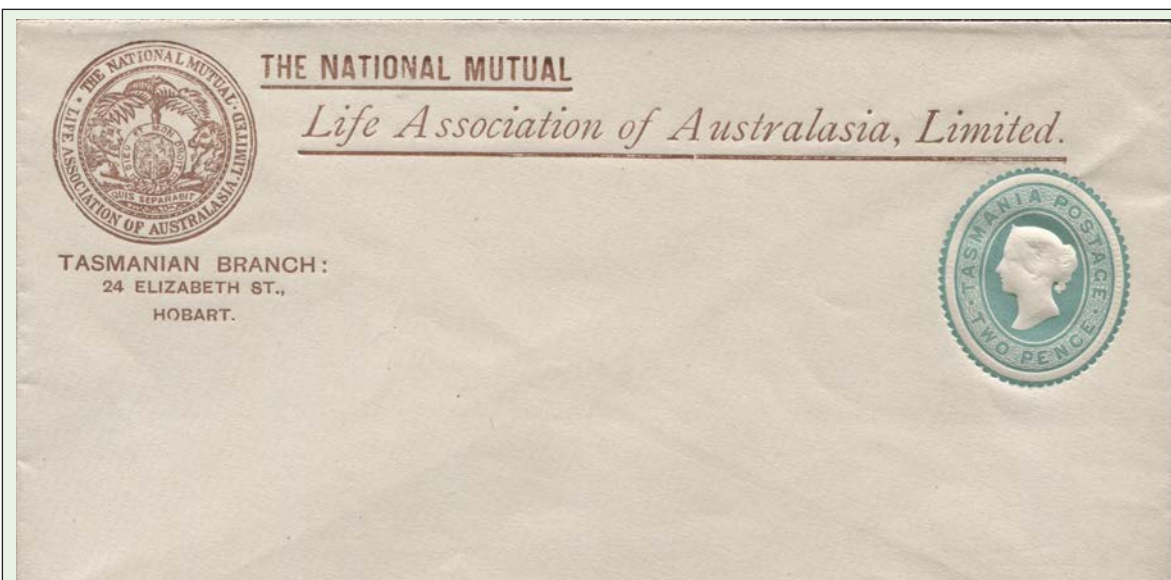


1906 (December 7) 2d embossing green used Hobart to Launceston at inland letter rate.

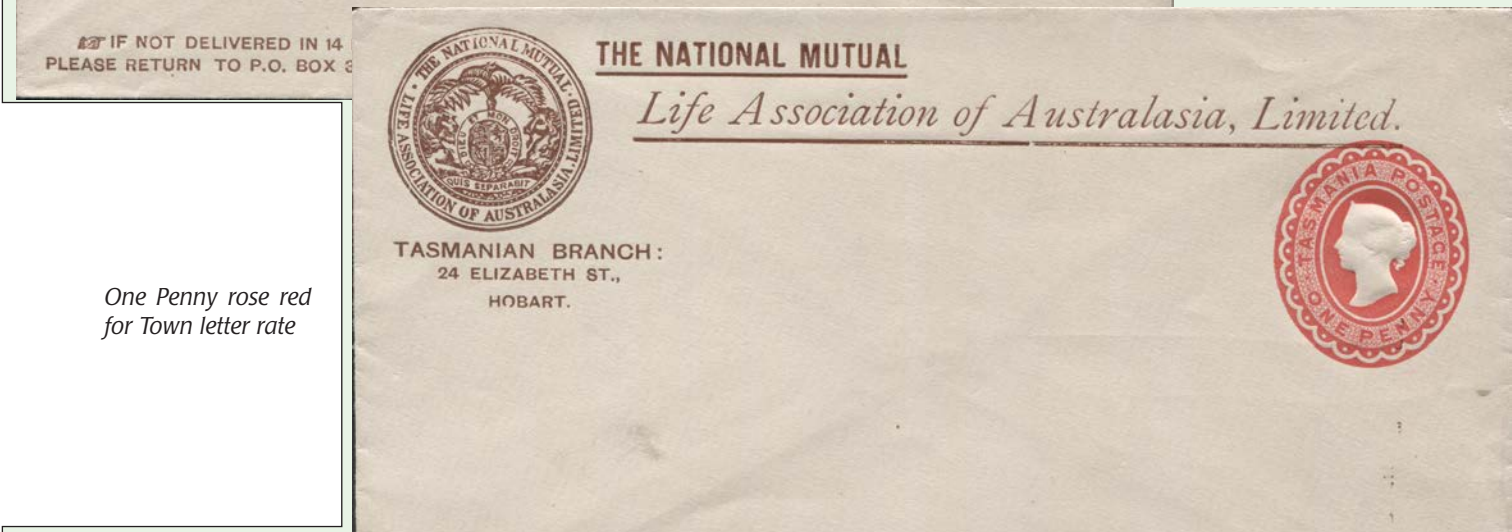
1902 (January 2) 2d + ½d embossing from Hobart to USA at foreign letter rate.



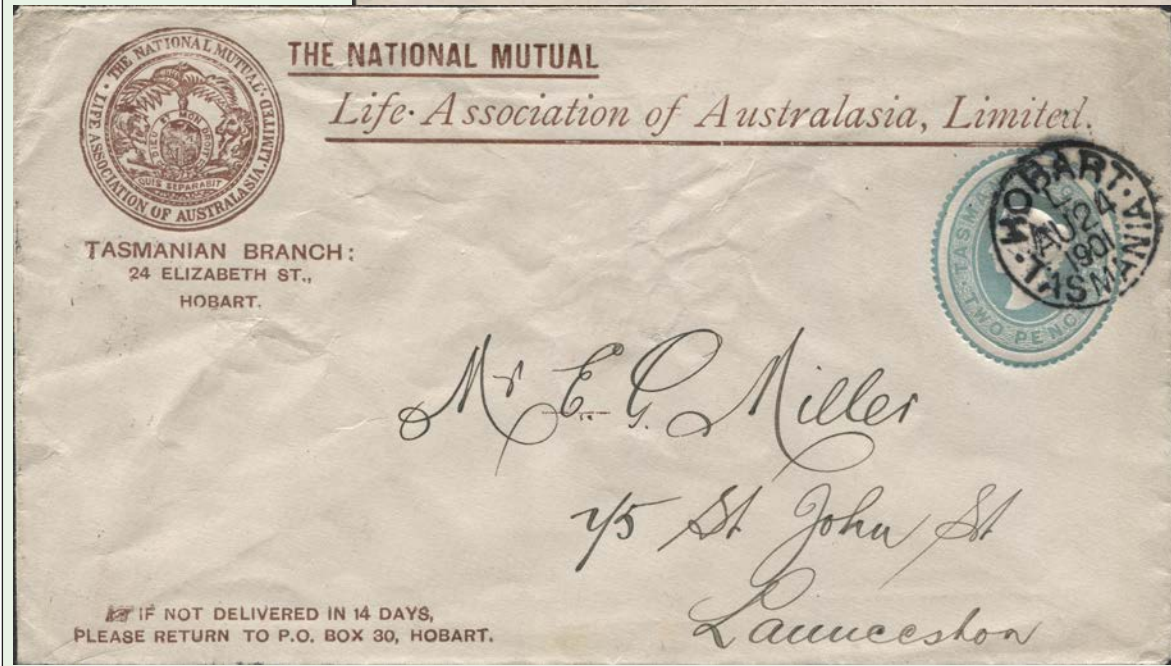
1891-1912 COMMERCIAL USERS OF THE STAMPED TO ORDER SERVICE



Two Pence blue green
for inland letter rate.



One Penny rose red
for Town letter rate



1901 (August 24)
Hobart to Launceston
at inland letter rate.

1891-1912 COMMERCIAL USERS OF THE STAMPED TO ORDER SERVICE

1898 - 1900 BURGESS BROTHERS TWO PENNY ENVELOPES



About 1900 - Burgess Brothers Merchants & Marine Board Stores.
Libraries of Tasmania Online collection



1900 (October 27) Hobart to London
uprated for 2½d overseas rate.
Burgess Brothers crest in blue.



1899 (May 23) Hobart to Sydney at 2d intercolonial rate. Burgess Brothers crest in red.

1891-1912 COMMERCIAL USERS OF THE STAMPED TO ORDER SERVICE

1902 BURGESS BROTHERS ONE PENNY EMBOSSING

This Firm used 1d stamped envelopes for town letter and unsealed printed matter rate mail and 2d envelopes for inland and intercolonial mail.



Burgess Brothers were wholesale grocers and wine and spirits merchants established in 1845 and based in Hobart. They were acquired by The Cascade Brewery Co, Ltd in 1964.

1891-1912 COMMERCIAL USERS OF THE STAMPED TO ORDER SERVICE

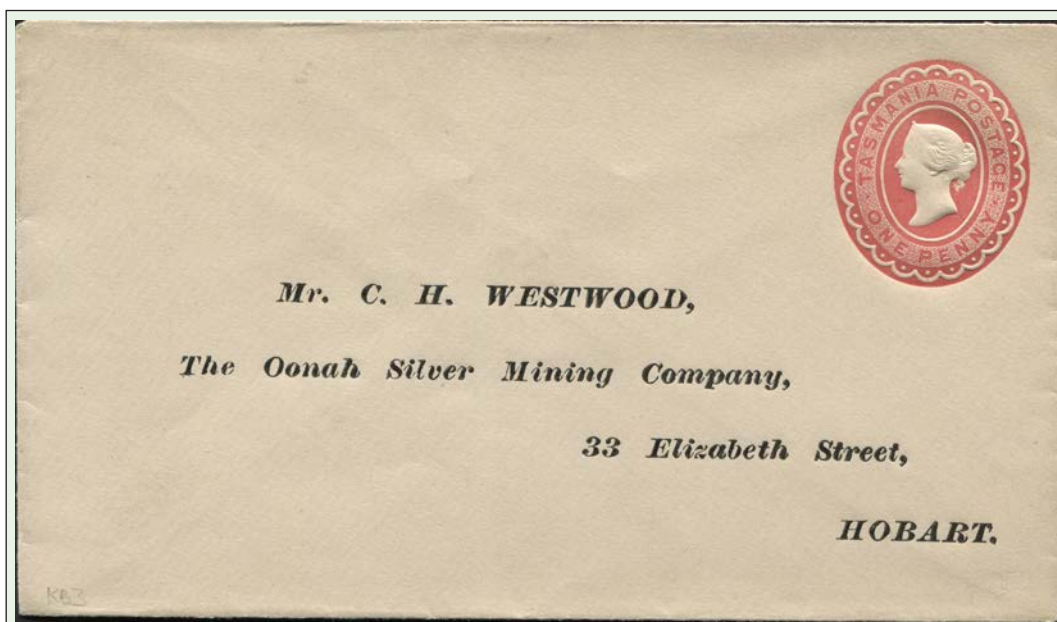
RENISON BELL PROSPECTING & MINING CO. NO LIABILITY & OONAH SILVER MINING COMPANY

The flourishing mining industry, particularly on the West Coast of Tasmania generated much of the Colony's wealth between 1885 and 1902 & they were active users of stamped to order stationery.



1913 (March 1) Hobart to Launceston at 1d printed matter rate registered by addition of 3 x 1d Kangaroo stamps. **Only recorded example of stamped to order stationery used in combination with Commonwealth stamps.**

Only recorded example of this user.

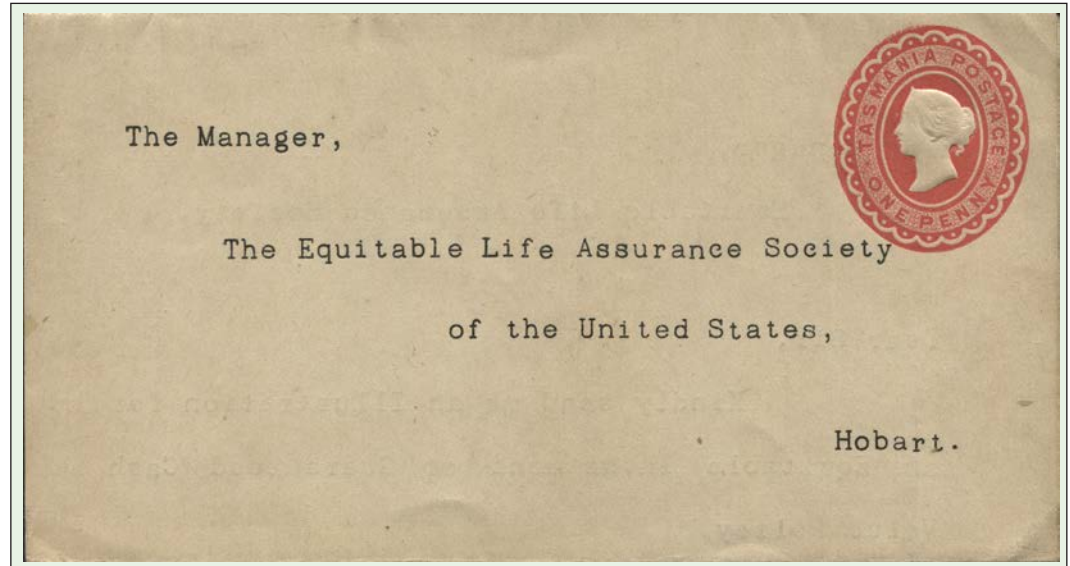
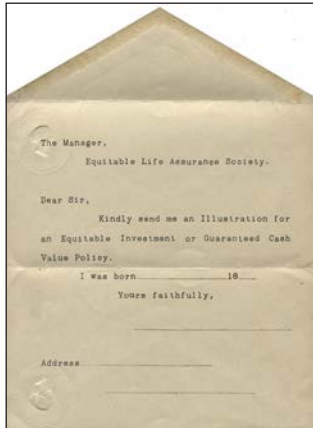


1898-1903 used as reply paid envelopes by C.H. Westwood Manager of The Oonah Silver Mining Company.

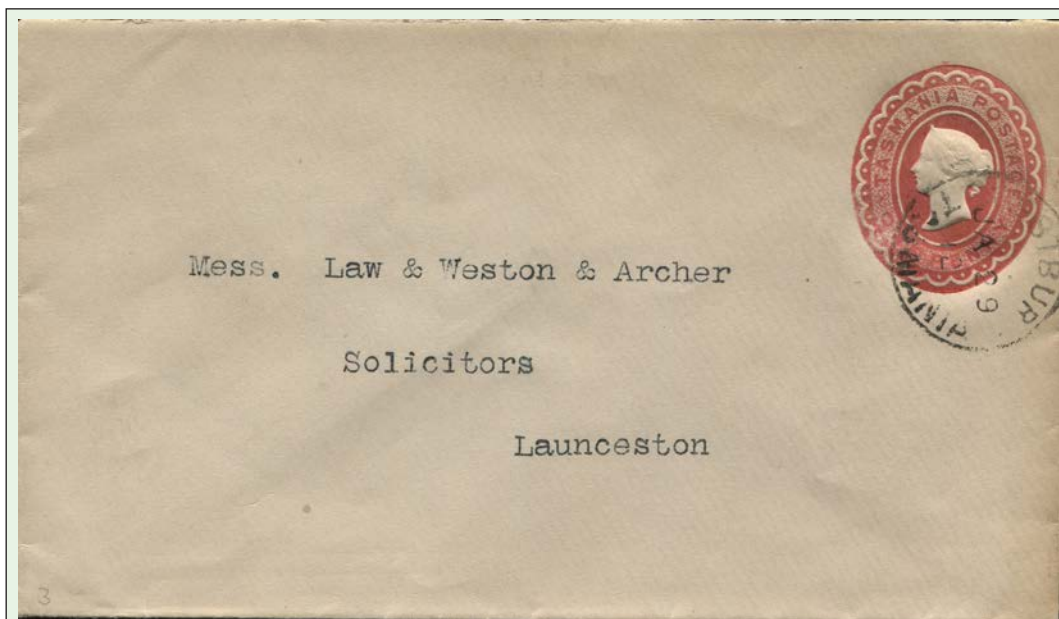
1891-1912 COMMERCIAL USERS OF THE STAMPED TO ORDER SERVICE

REPLY ADDRESSED ENVELOPES

Stockbrokers, Solicitors & Insurance companies operating in Tasmania between 1894 to 1912 used the stamped to order service to produce addressed postage paid envelopes & lettersheets for use by shareholders & policyholders. All are embossed for the unsealed printed matter rate of 1d.



1889-1900 Equitable Life Assurance Society of the United States. Folded lettersheet open at each end for inspection to comply with the concessional rate requirements.



1912 (January 29) Westbury to Launceston to Law & Weston & Archer, Solicitors.

1891-1912 COMMERCIAL USERS OF THE STAMPED TO ORDER SERVICE

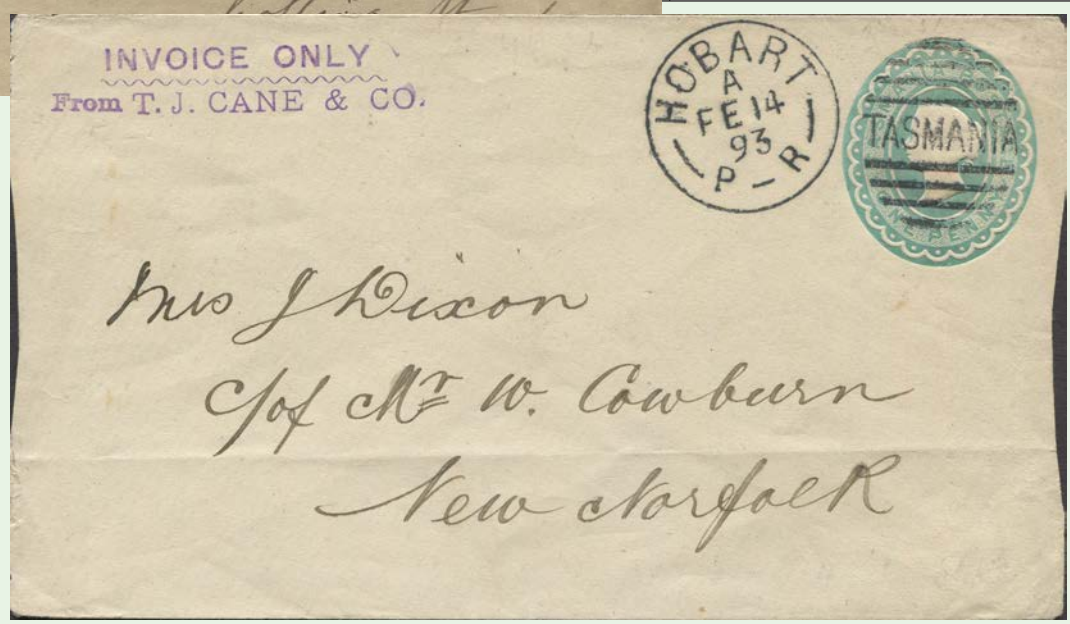
ROBERT H PRICE & L SUSMAN & T.J. CANE & CO. RUBBER HANDSTAMPED ENVELOPES

Robert H Price



1900 (April 6) ½d + ½d vermilion meeting unsealed printed matter rate.

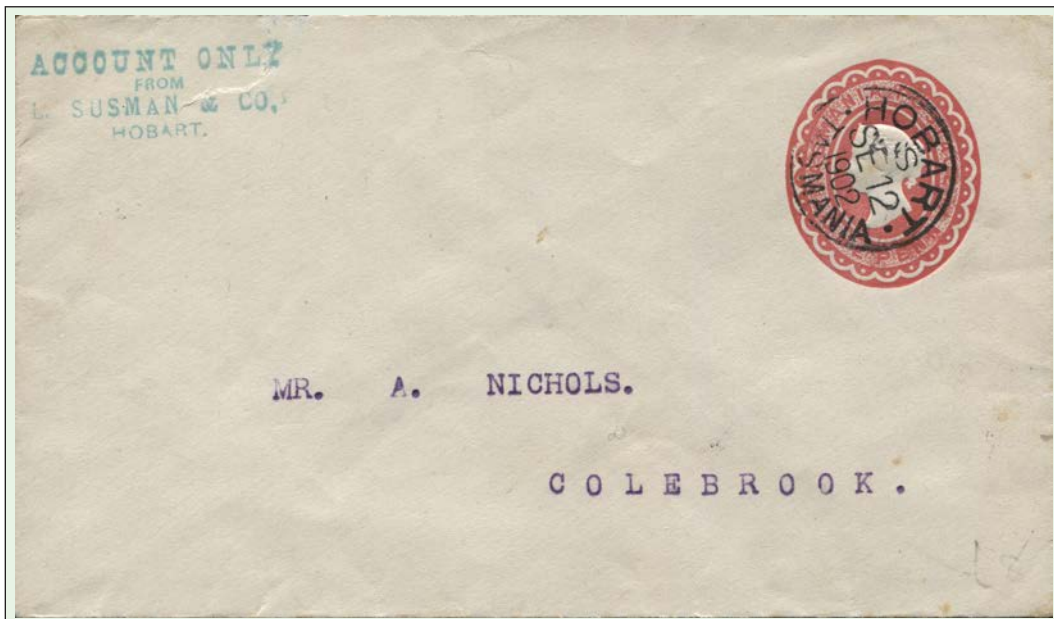
T.J. Cane & Co.



1893 (February 14) 1d green meeting unsealed printed matter rate.

Error of colour found January/February 1893

L. Susman



1902 (September 12) Hobart to Colebrook at 1d unsealed printed matter rate.

1891-1912 COMMERCIAL USERS OF THE STAMPED TO ORDER SERVICE

1893 7 1905 SAVINGS BANK PACKETS - HOBART SAVINGS BANK & LAUNCESTON BANK FOR SAVINGS

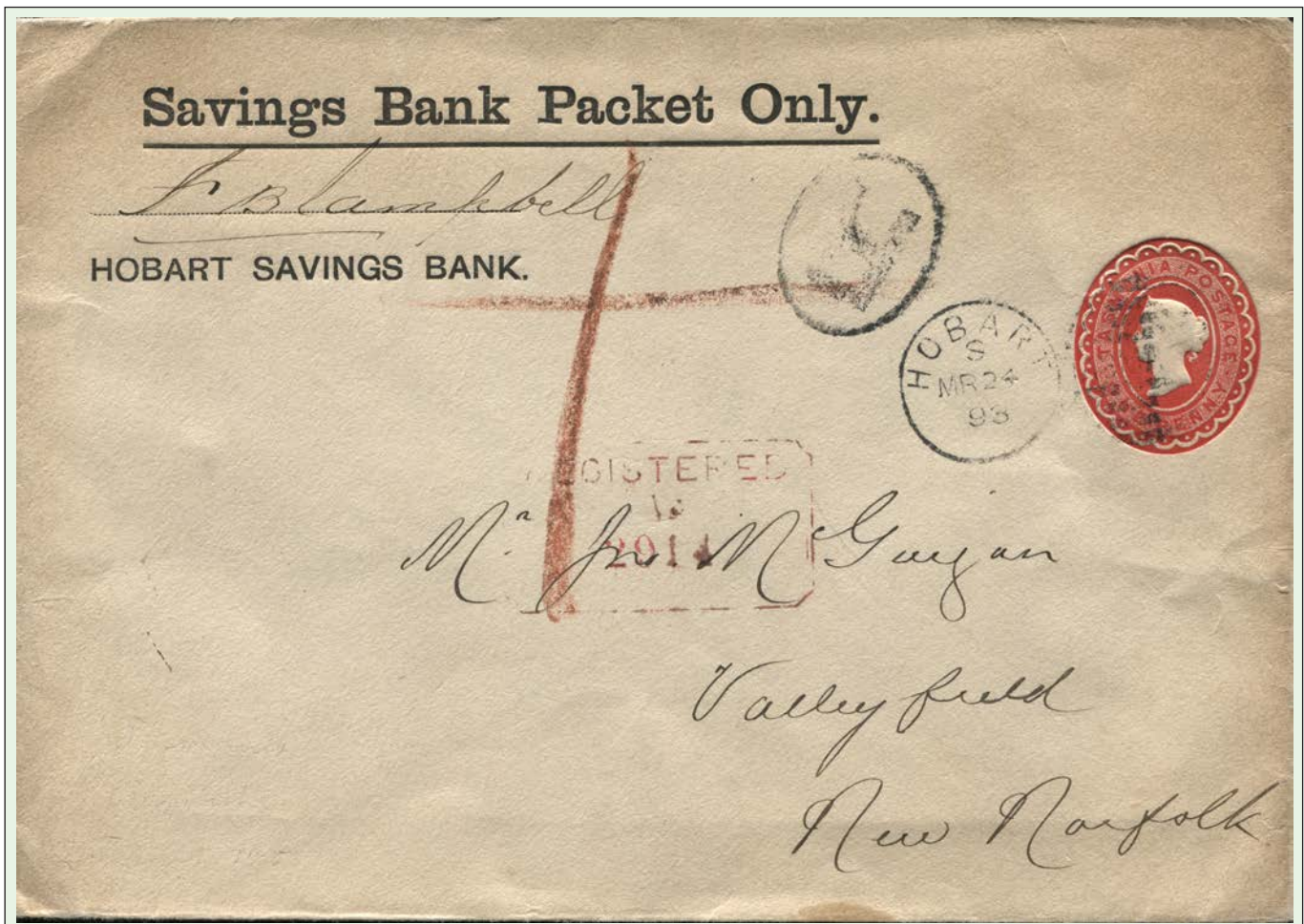
Special Regulations were adopted on November 1st 1862 providing a 1d per 4 oz. concessional rate for Savings Bank books provided they were properly endorsed and clearly marked. The rate was not implemented until 1st January 1882. These were the two principal Savings Banks in the Colony and they adopted printed to private order stationery to simplify the return of Bank books by customers.



Backstamp of Bank for Saving Launceston.



Backstamp of Hobart Savings Bank.



1893 (March 24) Hobart to New Norfolk at 1d special Savings Bank rate. Registration was Free.

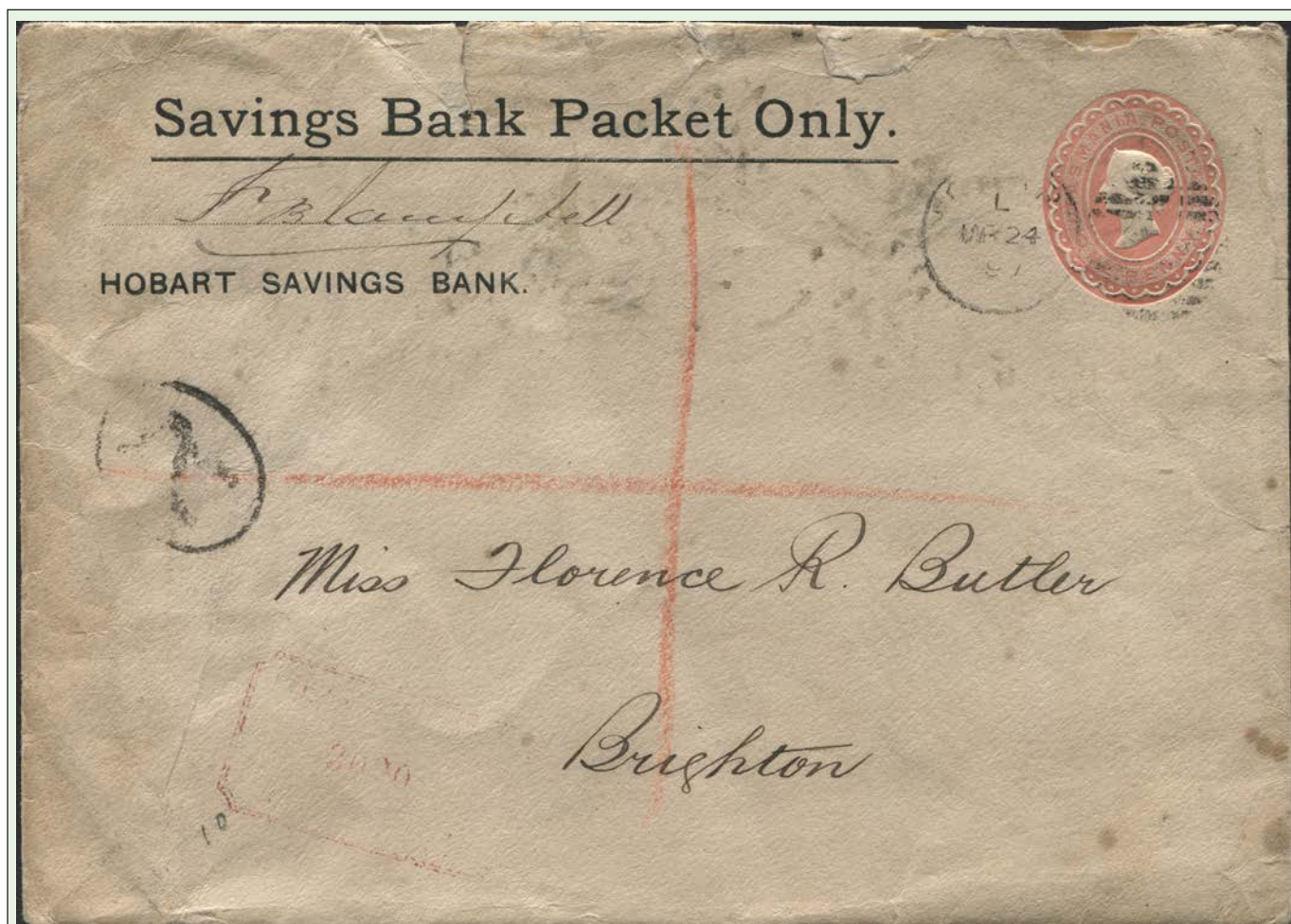
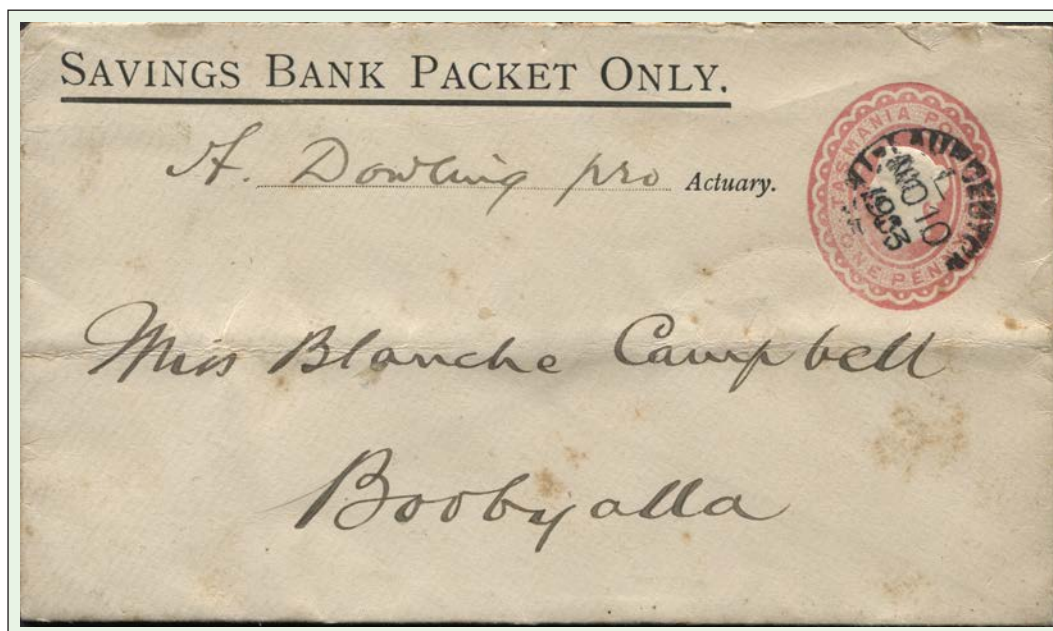
1891-1912 COMMERCIAL USERS OF THE STAMPED TO ORDER SERVICE

1897 & 1903 SAVINGS BANK PACKETS - HOBART SAVINGS BANK & LAUNCESTON BANK FOR SAVINGS

The principal Savings Banks using the printed to private order service for the mailing of Savings Bank books.



Backstamp of Hobart Savings Bank.



1897 (March 24) 1d pale rose red for Hobart Savings Bank Hobart to Brighton. Registration covered by 1d concessional rate.

1891-1912 COMMERCIAL USERS OF THE STAMPED TO ORDER SERVICE

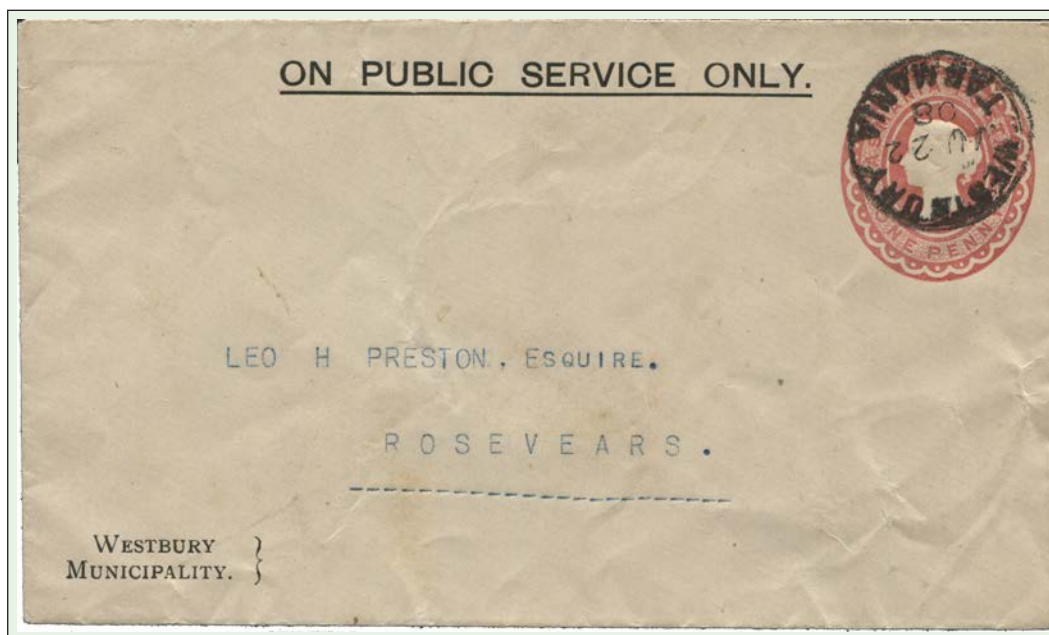
1908 & 1910 MUNICIPALITIES OF ST LEONARDS & WESTBURY

Municipality of St Leonards



1910 (June 15) 1d rose red used in Launceston at unsealed printed matter rate.

Municipality of Westbury



1908 (June 22) 1d rose red Westbury to Launceston at unsealed printed matter rate.