

**PICTORIALS PRINTED IN LONDON BY DE LA RUE
MARCH 1900 SIX PENCE DILSTON FALLS**

De La Rue invoiced the Tasmanian Government 8000 sheets (480,000 stamps) of the 6d. value on 18th December 1899. Indent No.23 attached to the original order requested 480,000 6d. stamps be printed. The Agent General was delivered 500 sheets of each of the values printed.



From Proof sheet watermarked TAS & endorsed "Approved 14 NOV 1899"



Fiscal use 1 March 900



Lake



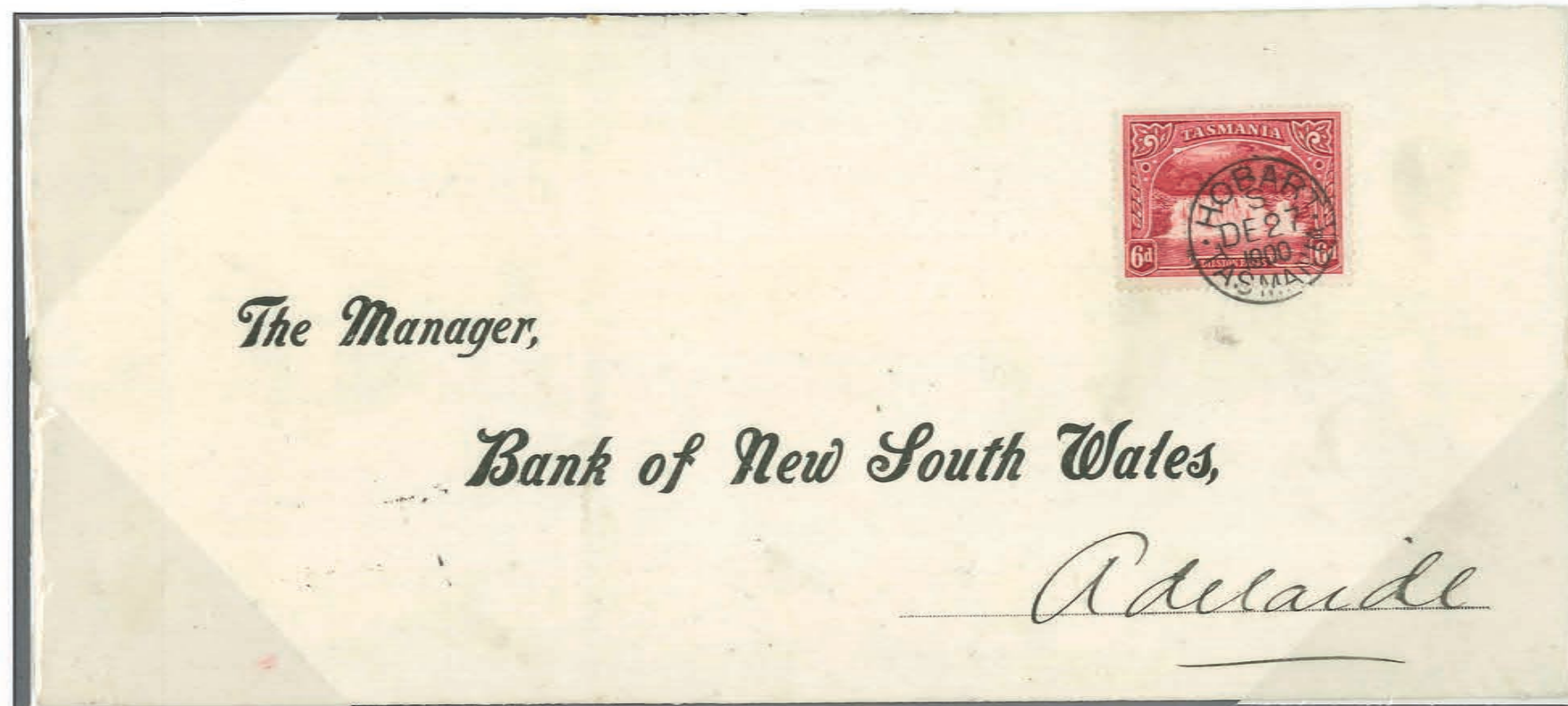
Early use Gordon
5 March 1900



1905 (July 21) on Inland Parcel label making up rate for 3½lb. 9d up to 2 lbs. and 3d for each additional lb. or fraction thereof.

PICTORIALS PRINTED IN LONDON BY DE LA RUE
SIX PENCE DILSTON FALLS USEAGE

The 6d value was used for triple country letter rates, Parcel rates and for a short period up to 31 October 1900 postage stamps could be used for revenue purposes. Revenue and postage use had to be separated from 1 November 1900 due to the formation of the Commonwealth Post Office and the need to separate State based revenues raised from postage revenue belonging to the Commonwealth.



1900 (December 27) Hobart to Adelaide at triple intercolonial rate. Backstamped 1 January 1901.
Only recorded single franking of the 6d value.

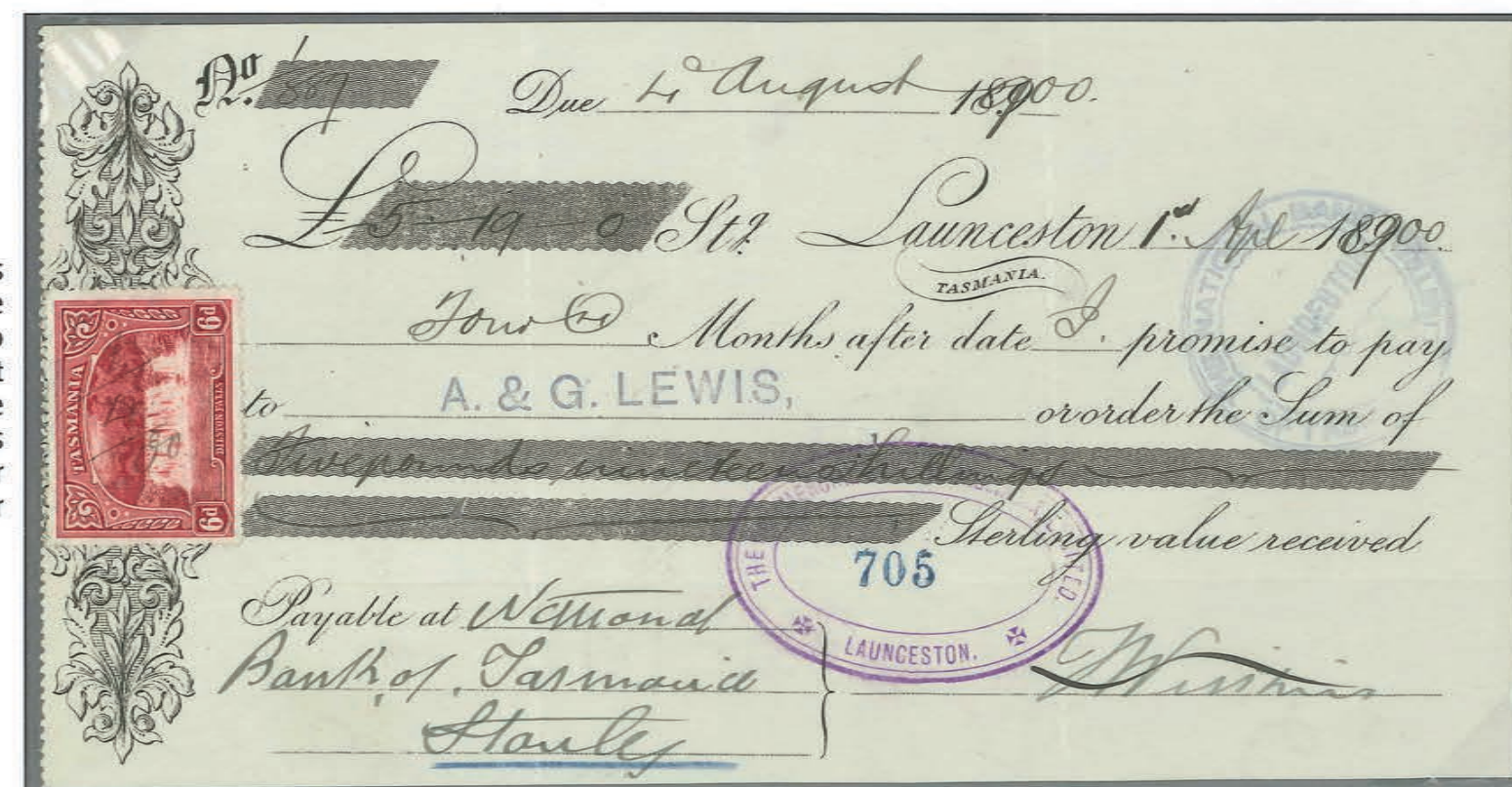


1904 (May 11) used as make-up rate on cloth gold packet label Hobart to New Golden Gate Mining Co. paying the special gold rate of 2d per oz. for a gold parcel weighing 6lb. 40 oz. and 3d registration.
HIGHEST FRANKED COVER FROM THE PICTORIAL PERIOD

The Stamp Duties Act was amended to ensure that postage and revenue stamps were no longer interchangeable but that amendment only came into force on 1 December 1900. Most values in the Pictorials are known used for Stamp duty purposes between their issue date and 1 November 1900.



1904 (May 10) Launceston to Burnie paying the double inland letter rate and registration fee.



1900 (April 1) used to meet the stamp duty payable on bills with the rate of 6d for bills issued for between £5 and £20.

PICTORIALS PRINTED IN LONDON BY DE LA RUE
SIX PENCE DILSTON FALLS OVERSEAS USAGE

The Six Pence was issued principally to meet parcel rates but also higher weight letters. The supply of London printings was sufficient to last until July 1908 indicating a monthly usage of around 4,800 stamps. It was replaced with the locally lithographed issue.



1901 (May 3) Hobart to New Jersey USA at double foreign letter rate and registration fee of 3d.



1901 (May 22) Hobart to Ceylon at triple foreign letter rate and registration fee. Overpaid 1/2d.

**PICTORIALS PRINTED IN LONDON BY DE LA RUE
MAY 1900 TWO PENCE HALFPENNY TASMAN'S ARCH**

De La Rue invoiced the Tasmanian Government 7850 sheets (471,000 stamps) of the 2½d. value on 28th March 1900. Indent No.23 attached to the original order requested 480,000 2½d. stamps be printed. The Agent General received 500 sheets of each of the values printed.



From Proof sheet watermarked TAS & endorsed 'Approved 22 JAN 1900'



Plate 1 and marginal cross



Plate 2 and marginal cross

Due to the decision to change the scene depicted on the 2½d value from St Columba Falls to Tasman's Arch this stamp was the last to be approved.

PICTORIALS PRINTED IN LONDON BY DE LA RUE
MAY 1900 TWO PENCE HALFPENNY TASMAN'S ARCH VARIETIES AND USAGE

The 2½d was prepared to meet the British Empire and foreign ½ oz. letter rate.



Early use 16 July 1900



Used pair (scarce)



Pale printing



1910 (May 15) Inland Parcel Registered at Hobart for book or packet weighing between 1 and 2 lbs.



1900 (July 25) Derby (2nd allocation numeral '299') to USA at foreign letter rate.
Only recorded example of 2nd allocation numeral on 2½d value.

PICTORIALS PRINTED IN LONDON BY DE LA RUE
TWO PENCE HALFPENNY TASMAN'S ARCH OVERSEAS USEAGE

The quantity printed of this value was sufficient to meet demand throughout the Pictorial period with usage known until around 1908. It was not replaced with a local printing. The Post Office held stocks of the 2½d Tablet issue which were turned to when the Pictorial issue was exhausted and many foreign letters were franked using the 2d and ½d values. Monthly usage of this value was around 4,600 stamps.



1903 (Feb.26) Elliott to Chicago at ½oz. foreign letter rate.



1903 (June 15) Hobart to England at ½ oz. British Empire rate.

PICTORIALS PRINTED IN LONDON BY DE LA RUE
TWO PENCE HALFPENNY TASMAN'S ARCH OVERSEAS USAGE

The 2½d rate to foreign countries was introduced in 1892 following Tasmania joining of the UPU as part of Australasia in October 1891 and continued into the Commonwealth period after 1912. The British Empire rate was also 2½d until 1st April 1905 when it was reduced to 2d per ½ oz.



1902 (Nov. 10) Launceston to Germany at the ½ oz. letter rate.



1901 (Jan. 10) Hobart to Germany registered letter at triple foreign letter rate. Registration fee in cost of the envelope.

**PICTORIALS PRINTED IN LONDON BY DE LA RUE
MAY 1900 THREE PENCE SPRING RIVER PORT DAVEY**

De La Rue invoiced the Tasmanian Government 7750 sheets (465,000 stamps) of the 3d. value on 28th March 1900. Indent No.23 attached to the original order requested 480,000 3d. stamps be printed. The Agent General received 500 sheets of each of the values printed.



From Proof sheet watermarked TAS & endorsed "Approved 1 JAN 1900"



Plate 1 and marginal cross. Plate 2 is also known.



Perforation misplaced due to paper fold.



Thin paper



Reversed watermark

PICTORIALS PRINTED IN LONDON BY DE LA RUE
MAY 1900 THREE PENCE SPRING RIVER PORT DAVEY VARIETIES AND USAGE

The principal use for the 3d value was to meet the registration fee and to a lesser extent the combined country letter and late fee.



Printed in oily ink



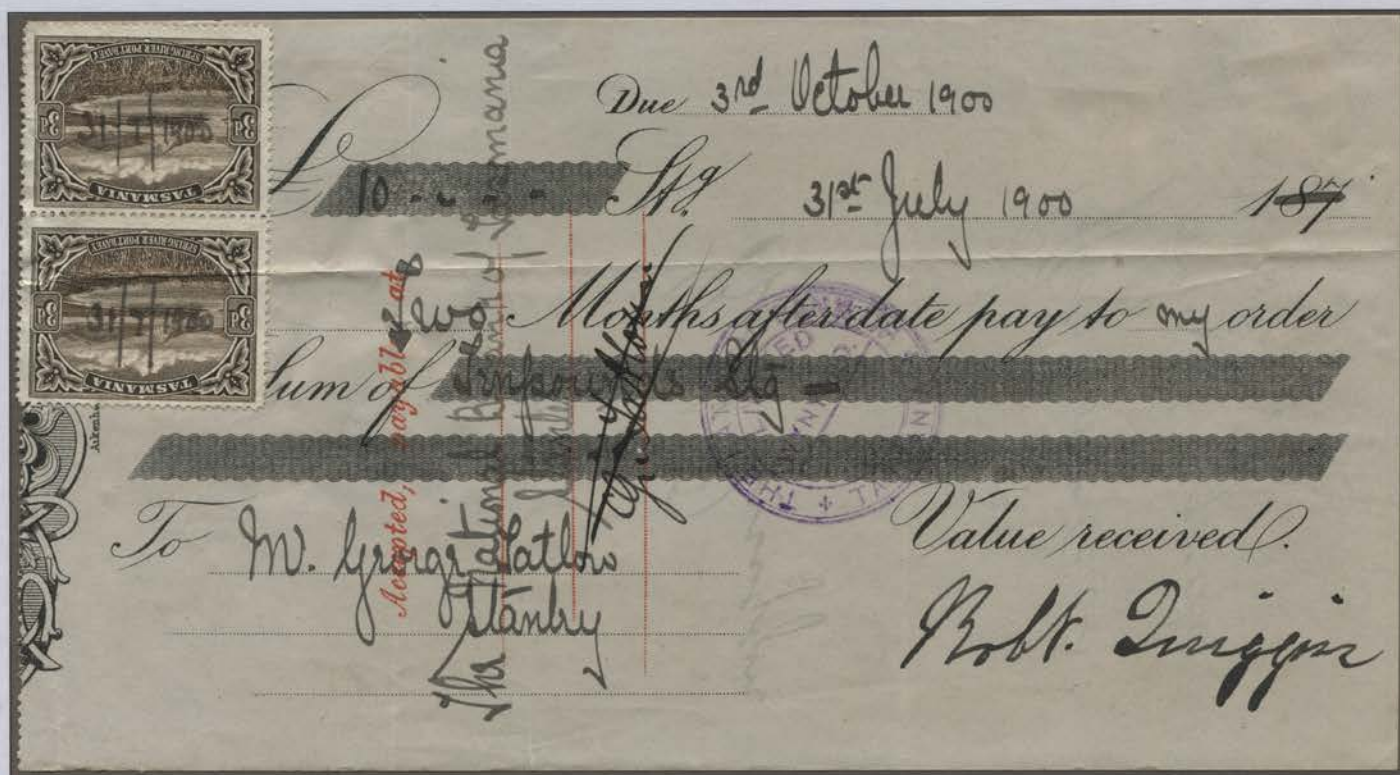
Double print upper left corner



Early postal use 21 June 1900



Fiscal use 'April 1/00'



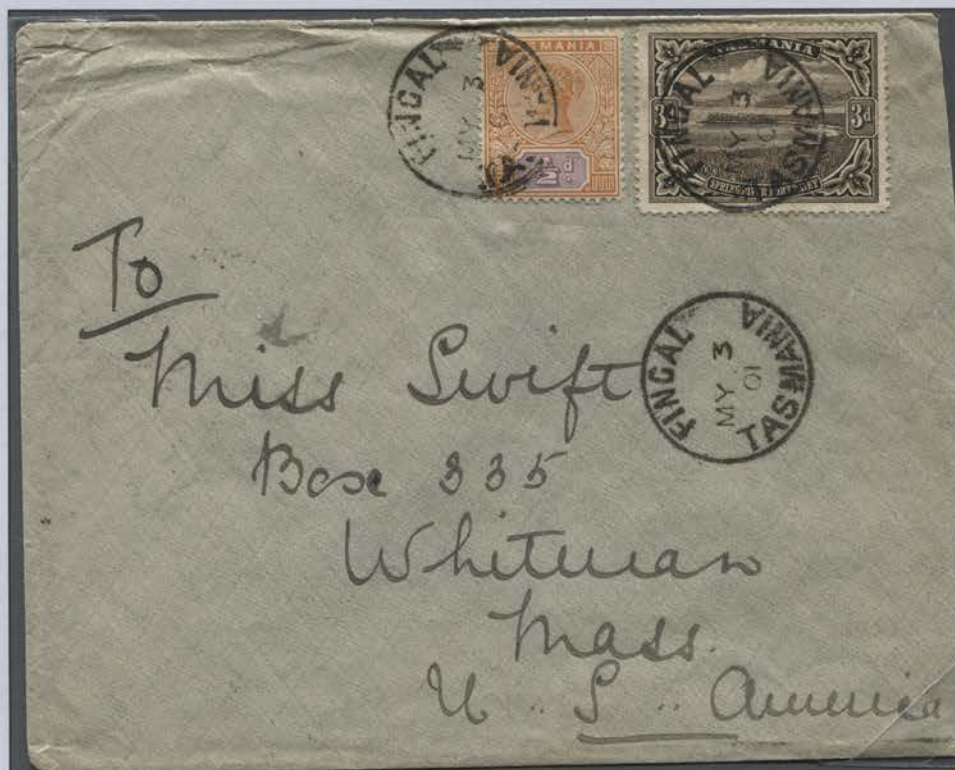
1900 (July 31) 3d value used to meet the duty for bills drawn for amounts between £5 and £20. Governing Act was 56 Vict. 6 (1892)

PICTORIALS PRINTED IN LONDON BY DE LA RUE
MAY 1900 THREE PENCE SPRING RIVER PORT DAVEY OVERSEAS USAGE

Meeting the registration fee was the principal use for the 3d value on overseas mail with some use as a make-up value.



1900 (July 12) Rosebery to Colorado meeting the registration fee and 2½d per ½ oz. foreign letter rate. Early date of use.



1905 (May 3) Fingal to Massachusetts meeting the ½oz foreign letter rate and 1d late fee.

PICTORIALS PRINTED IN LONDON BY DE LA RUE DILEMMA OF THE NUMERAL OBLITERATORS

The intention to promote Tasmanian scenery through the issue of this series was significantly diminished by the continued use of numeral obliteratedors to cancel the stamps, thereby obliterating the stamp image. This practice had been in operation since 1853 and the later series since 1861. It also meant 'double handling' of the mail as the numeral had to be applied to cancel the stamp as well as a datestamp to indicate date and place of posting. These matters led to a progressive withdrawal of the obliteratedors from March 1900 through to June 1900.



1/2d - '21' of Carlton



6d - 2nd allocation '362' of North Mount Lyell.



5d - '382' of Regatta Point



2 1/2d - '2' of Avoca

The short time between the issue of the final values for the Pictorials in late May 1900 and the withdrawal of the 2nd allocation numeral obliteratedors from May to September 1900 meant that these issues, apart from the 1d and 2d, struck with a numeral obliterator are scarce.



4d - '299' of Waratah



1900 (Feb.9) Bellerive to Carlton at inland letter rate showing 2nd allocation numeral obliterator '48' struck on the stamps alongside the datestamp.

PICTORIALS PRINTED IN LONDON BY DE LA RUE 1900 SPECIMEN OVERPRINTS

The Pictorial series was sent to the UPU overprinted SPECIMEN by De La Rue and distributed under Circular 506/30 on 24 January 1900 (1d & 2d), 2766/135 on 19 May 1900 ($\frac{1}{2}$ d, 5d & 6d); and 3997/190 on 21 July 1900 ($2\frac{1}{2}$ d, 3d & 4d). The style of overprint is similar to that used on British revenue issues of the period.



On 24 August 1904 under Circular 3456/1867 the $\frac{1}{2}$ d & 2d lithographed and 1d electrotyped issues were distributed.

PICTORIALS PRINTED IN LONDON BY DE LA RUE
28 MAY 1900 - FIRST DAY OF AVAILABILITY OF THE COMPLETE SERIES

The final values issued were the 2½d, 3d and 4d values generally accepted as being available in June 1900. This cover shows the earliest recorded date of issue for the final values of the series issued.



1900 (May 28) Hobart to Germany bearing the full series of Pictorial issues. Only four such covers are recorded.

The Cress collection held a similar first day of issue cover with registration number 4347. This cover shown is registration number 4350