

### THREE PENCE MELBOURNE PRINTINGS 1905 LITHOGRAPHIC PRINTING ON CROWN A PAPER

In August 1905 a lithographic printing of 5,500 sheets was carried out and 5,000 sheets (327,660 stamps) distributed to the Post Office during late 1905 and a final distribution of 461 sheets in October 1908. 39 sheets were sent to spoils. This printing was issued on the exhaustion of the London printing. The lithographic stones (two 60 units) were prepared by taking transfers from the De La Rue steel plate.



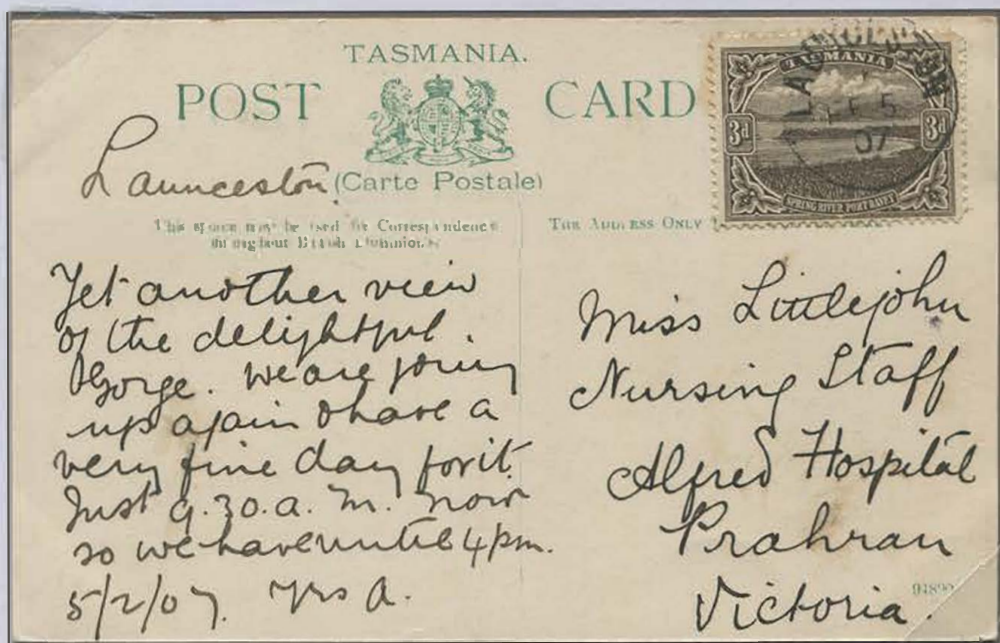
Watermark sideways left and showing marginal cross in transfer from De La Rue plate.



Paper crease



Early date of use - 5 May 1906



1907 (February 5) Launceston to Melbourne at intercolonial rate and 1d late fee.



# THREE PENCE MELBOURNE PRINTINGS 1905 LITHOGRAPHIC PRINTING ON CROWN A PAPER VARIETIES & USAGE

Both lithographic stones of 60 units show a number of significant flaws peculiar to the lithographic process.



Unpositioned - colour spur extending from peninsular into Port Davey at right

## Creased transfers



Unpositioned - Creased transfer at upper left corner  
Double perforations at base



Unpositioned - Creased transfer through right value tablet



Sheet A position 5.  
White flaw in right ornament



Sheet A position 55.  
Doubling of LL frame



Sheet B/18



Sheet B position 18.  
Scratch through centre design  
extending to position 24.

## Scratched transfers



Sheet B position 24.  
Scratch through centre design  
extending from position 18.



Sheet B/24



### THREE PENCE MELBOURNE PRINTINGS

#### 1905 LITHOGRAPHIC PRINTING ON CROWN A PAPER MASTER PLATE VARIETIES & USAGE

The De La rue 'master' plate used as the basis for the lithographic transfer showed small flaws which came across to the lithographic stone. Two transfers were taken to produce stones A & B as flaws peculiar to each transfer can be found. Position 20 in each stone provides the best example.

Master Plate flaw at position 20 on both stones

Sheet A position 20  
master plate flaws as dots right  
of DAVEY. Colour flaw in sea.



Sheet B position 20  
master plate flaws as dots right  
of DAVEY. No colour flaw in sea.



Sheet A position 13 "Lighthouse" flaw below Mt. Rugby & Master  
plate flaw position 20.

Principal purpose to meet the registration fee



1906 (June 22) Linda to Hobart at double inland letter rate and 3d registration fee.

### THREE PENCE MELBOURNE PRINTINGS 1908 ELECTROTYPED PRINTING ON CROWN A PAPER

In November 1908 a printing of 6,000 sheets was carried out using the electrotyped printing method and 5,982 sheets (358,920 stamps) distributed to the Post Office from November 1908 until November 1910. 18 sheets were sent to spoils.



Vandyke brown & Watermark sideways left with marginal cross.



Early date of use 12 March 1909.



1909 (June 19) posted on train to Launceston (T.P.O. No.6) 3d meeting inland letter rate and late fee.



# THREE PENCE MELBOURNE PRINTINGS 1908 ELECTROTYPED PRINTING PLATE LAYOUT

The plates of 60 units were produced using a zinc line block derived from a die taken photographically from a unit on the De La Rue steel plate. Each block consisted of 4 units with each plate consisting of 15 blocks. In producing the 3d line block one unit (type B) developed two white dots in the lower right corner ornament causing each block used in the first plate (A) to show types AB/BA in a regular pattern throughout the 60 units. During manufacture of the second (B) plate the zinc block was reconstructed due to damage to show a different pattern with the latter half of the plate showing BB/BB.



Plate A showing B A over A B



Plate B showing B B over B B



Type A with no white dots in lower ornament



Plate B showing B A over A B



Type B with white dots in lower ornament

A	B	A	B	A	B
B	A	B	A	B	A
A	B	A	B	A	B
B	A	B	A	B	A
A	B	A	B	A	B
B	A	B	A	B	A
A	B	A	B	A	B
B	A	B	A	B	A

Layout for Plate A.

A	B	A	B		
B	A	B	B	B	B
A	B	B	B	B	B
B	B	B	B	B	B
A	B			B	B
B	B		B	B	B
A	B			B	B
B	A			B	B
				B	B

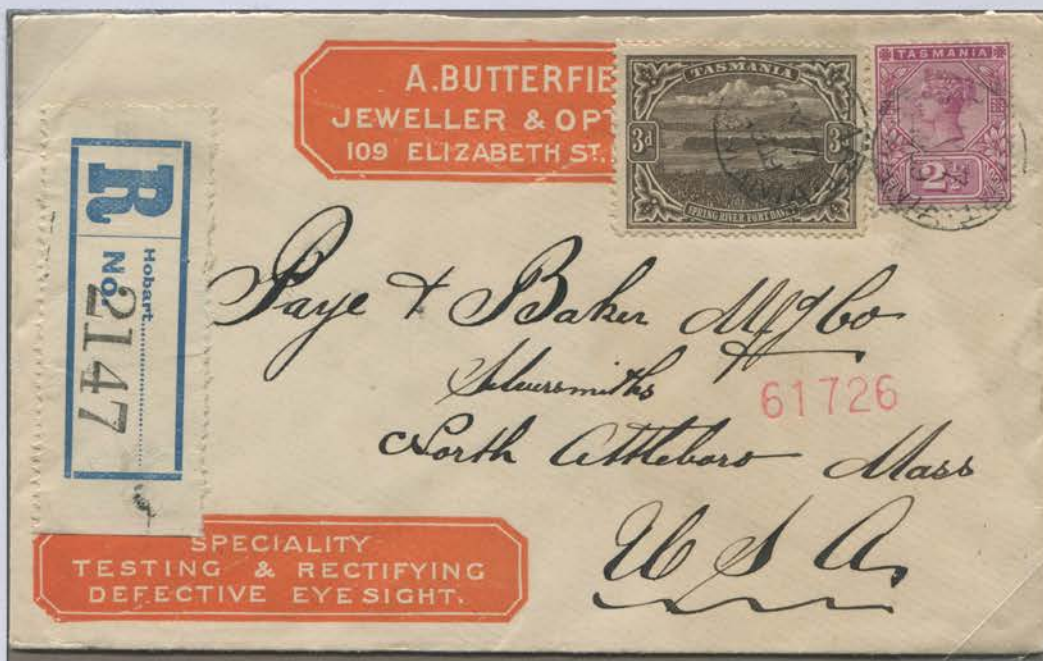
Layout for Plate B (incomplete).

# THREE PENCE MELBOURNE PRINTINGS 1908 ELECTROTYPED PRINTING USAGE

The principal purpose of the 3d value was to meet the registration fee and to a lesser extent as a make-up rate for parcels and to cover the late fee on inland letters. It is estimated usage of the 3d was 7,600 per month.



1910 (November 9) Inland Parcel label for a 2lb parcel Hobart to Gladstone.



1909 (May 7) Hobart to Massachussetts at 2½d foreign letter rate and 3d registration.



# THREE PENCE MELBOURNE PRINTINGS 1912 ELECTROTYPED PRINTING ON THIN PAPER WATERMARKED CROWN A

In September 1912 an emergency printing of 500 sheets was made on new paper using the electrotyped printing method and 499 sheets (29,940 stamps) distributed to the Post Office on 2 October 1912. This printing was to maintain stocks of the 3d until the introduction of the Kangaroo issues in January 1913.



Vandyke brown & Watermark sideways left.



Early date of use 4 November 1912.



1913 (April 19) West Devonport to Canal Zone at double foreign letter rate.

## FOUR PENCE MELBOURNE PRINTINGS

### 1906 LITHOGRAPHED PRINTING FROM PLATES 1 & 2 ON CROWN A WATERMARKED PAPER

In November 1906 two lithographic plates (Plates 1 & 2) were prepared to print 3,000 sheets on Crown A watermarked paper. 2,975 sheets (178,500 stamps) were distributed to Hobart between December 1906 and April 1908. There were 25 sheets sent to spoils. Usage of the 4d value throughout the period 1906 to 1912 averaged 9,600 stamps a month.



Burnt sienna & Watermark vertical with marginal cross.



Watermark inverted.



Early date of use  
20 March 1907.



Position 51  
Doubling of frame lower left



Unpositioned  
Broken frame lower left



Unpositioned  
Colour flaw left margin



## FOUR PENCE MELBOURNE PRINTINGS

### 1908 LITHOGRAPHED PRINTING FROM PLATES 3 & 4 ON CROWN A WATERMARKED PAPER

In April 1908 two new lithographic plates (Plates 3 & 4) were prepared to print 4,000 sheets on Crown A watermarked paper. 3,981 sheets (238,860 stamps) were distributed to Hobart between April 1908 and June 1910. 19 sheets were sent to spoils.



Sepia & Watermark vertical.



Early date of use  
15 May 1908.



Deep sepia used May 1909



Deep Sepia shade &  
Watermark inverted



1910 (Nov.1) Hobart to England 4d from Plate 3,4 paying double British Empire rate.

## FOUR PENCE MELBOURNE PRINTINGS

### 1910 LITHOGRAPHED PRINTING FROM PLATE 5 WITH CROWN A SIDEWAYS WATERMARK

In September 1910 a single lithographic plate (Plate 5) was prepared to print 1,332 sheets on Crown A watermarked paper. 1,315 sheets (78,900 stamps) were distributed to Hobart between September and November 1910. 17 sheets were sent to spoils. It is apparent tht the impending introduction of a Uniform Commonwealth issue affected the quantities printed, especially of the higher values.



Sienna and watermark sideways left.



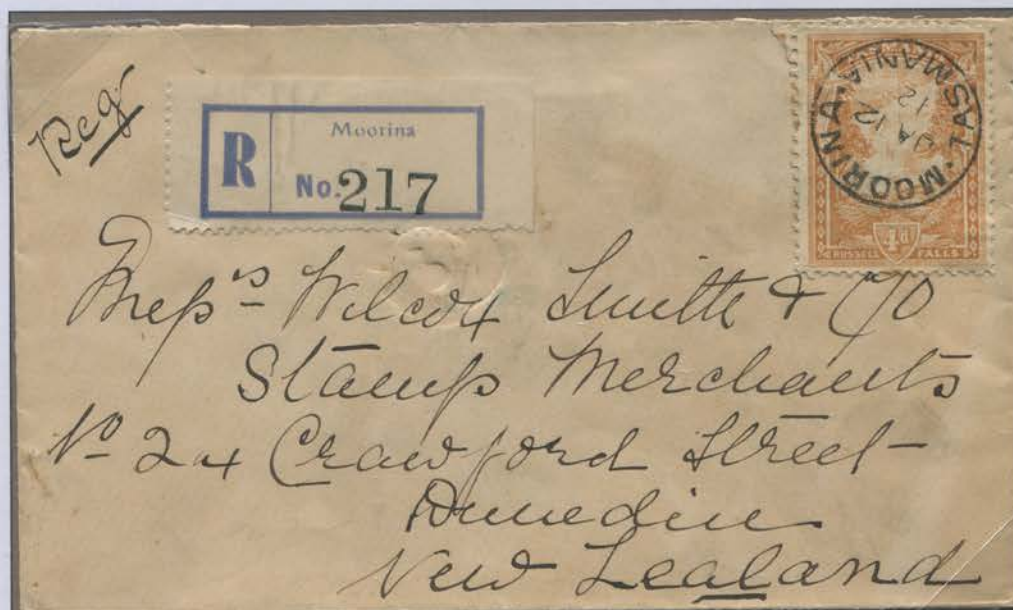
Early date of use  
26 June 1911.



Watermark sideways  
left used at Sidmouth



Watermark sideways  
right used at Russell.



1912 (January 12) Moorina to New Zealand paying intercolonial rate and 3d registration fee.



## FOUR PENCE MELBOURNE PRINTINGS

### 1912 LITHOGRAPHED PRINTING FROM PLATE 6 WITH CROWN A VERTICAL WATERMARK

In February 1912 a single lithographic plate (Plate 6) was prepared to print 2,018 sheets on Crown A watermarked paper. 2,000 sheets (120,000 stamps) were distributed to Hobart in February and March 1912. 18 sheets were sent to spoils. The quality of this lithographic printing was poor with considerable shade variation.



Yellow orange with watermark vertical.



Early date of use  
25 March 1912.



Pale Yellow orange  
with wmk. vertical.



Watermark inverted



1912 (July 11) Hobart to Melbourne paying intercolonial rate and 3d registration fee.



# FOUR PENCE MELBOURNE PRINTINGS 1912 LITHOGRAPHED FLAWS & RETOUCHES FROM PLATE 6

The February 1912 printing from Plate 6 was of poor quality and several significant lithographic flaws are present.



Lithographic brush retouch and void panel at left.

Position 1 in the sheet shows extensive brush retouching of the trees above the Falls and Position 3 shows an extensive void in the left panel. Throughout the sheet the details of the trees are weak above the Falls and it is apparent the retouch on position 1 was an attempt to correct this weakness.



Position 1 retouch enlarged.



Position 1 retouch deep yellow orange.



Position 1 retouch Pale yellow orange.



Position 3 void panel deep yellow orange



Weakness in trees above Falls



Shade

Shows the Retouched trees at position 1 proving it was a printing from Plate 6 but in a markedly differing shade.

Sienna shade comparable to the printing from Plate 5 with watermark inverted



## SIX PENCE MELBOURNE PRINTINGS

### 1910 ELECTROTYPED PRINTING ON CROWN A SIDEWAYS WATERMARKED PAPER

In October 1910 a single electrotyped plate was prepared to print 2,000 sheets on Crown A watermarked paper. 1,985 sheets (119,100 stamps) were distributed to Hobart in October and November 1910. 15 sheets were sent to spoils. This printing is distinguishable from the 1911 printing by shade which is recorded in the ink records as  $\frac{1}{2}$ lb. Dahlia red and  $\frac{1}{2}$ lb. of Crimson red. The 1911 printing was recorded as Crimson lake. The electrotyped plate produced bore the monograms (JBC and CA) of J.B. Cooke.



Carmine lake with Watermark sideways.



Deep Carmine lake used April 1911.



Early date of use  
23 December 1910



Deep carmine lake used Chester April 1912.



Weakness in sky over Falls.

#### Progressive stages of the flaw over MAN of TASMANIA - Position 26



Early state



Intermediate state



Late state  
Perforated OS from 500  
sheets in October 1910

Lancaster states in *Pictorials Stamps of Tasmania*, 1986 that two plates of 60 were manufactured which disagrees with JRW Purves who suggested only one plate was made.



## SIX PENCE MELBOURNE PRINTINGS

### 1911 ELECTROTYPED PRINTING ON CROWN A SIDEWAYS WATERMARKED PAPER

In April 1911 the electrotyped plate was used to print 3,000 sheets on Crown A watermarked paper. 2,981 sheets (178,860 stamps) were distributed to Hobart between May 1911 and August 1911. 19 sheets were sent to spoils. The ink issued for this printing was recorded as ½lb. of Crimson red. A small part of this printing is found with watermark vertical.



Dull carmine red CA monogram.



Early date of use  
12 February 1912



Watermark upright &  
inverted



Watermark upright.



Dull carmine red JBC monogram.



Interstate Parcel Label paying 8d for parcel under 1 lb. to any other State under the 1902 Postal Act.  
Repaired



## SIX PENCE MELBOURNE PRINTINGS

### 1910 & 1911 ELECTROTYPED PRINTING MAKE-UP OF THE PLATE

The same process in producing the other electrotyped plate was used for the 6d value. The process of taking a lead impression of block of four units from the copper electrotype placed strain on the units (at this stage type A) and caused splintering of the lower right corner of unit 4 requiring repair (type B). Further similar damage occurred to unit 1 so the block consisted of type B at 1 and 4 and type A at 2 and 3. Further damage, this time to the lower left corner of unit 3 was repaired (type C). Further research could reveal further types and combinations of zinc blocks of four.

A	A
A	A

First state

A	A
A	B

Second state



Initial state of line block all units type A

B	A
A	B

Third state

B	C
A	B

Fourth state



Third state showing type B on units 1 and 4



Block showing AA over CC



Block from 1910 printing showing types B C A A A A in positions 1 to 6 and types A B A B A B at positions 7 to 12.



## SIX PENCE MELBOURNE PRINTINGS 1911 ELECTROTYPED PRINTING USAGE

The principal use for the 6d was for parcel rates and higher weight letters. The 1911 printing of 6d lasted until well into 1913 and was replaced by the 6d Kangaroo design. Together with the ½d value they are found used in conjunction with the 1d Kangaroo issue which started to appear in Tasmanian Post Offices from late January 1913.



1913 (April 22 Hobart to Ohio at triple foreign letter rate.

A recent survey of early dates of use of the 1d Kangaroo issue show the major offices began to receive supplies of the Commonwealth issue from late January 1913. The higher values were issued in Tasmania much later with the ½d and 6d Pictorials still in use into 1914.

Early dates of use recorded so far are Launceston 23/01/13; Lisle Road Station 3/02/13; Hobart North & Augusta Gate 4/02/13; Hobart, Buckland & Derby 7/02/13; Mangalore 10/02/13 and Cambridge 26/02/13.

Source: Tasmanian Philatelic Society Bulletin Board