

8. The ANZAC Mounted Division

The Egypt Expeditionary Force for the Middle East Campaign comprised of British, Australian, New Zealand and Indian troops. The ANZAC Mounted Division was raised in March 1916 and was assigned to the 1 ANZAC Corps. On establishment, it consisted of four brigades comprising three Australian light horse and one New Zealand mounted rifles, supported by British horse artillery.

The battle field locations of the ANZAC Mounted Division is represented in the above map of the region.



Datestamps were distributed to the following units:

- 8.1 ANZAC Mounted Division Headquarters
- 8.2 Divisional Remount and Training Depot
- 8.3 1st Australian Light Horse Brigade

- 8.4 1st Australian Light Horse Brigade - Details
- 8.5 2nd Australian Light Horse Brigade
- 8.6 3rd Australian Light Horse Brigade

8.1 The ANZAC Mounted Division - Headquarters

Field Post Office D.M. 1

The ANZAC Mounted Division Headquarters datestamp D.M. 1 was manufactured by the British Royal Engineers for the Army Postal Service. The Headquarters were located at the following sites during the campaign:

Country	Location	Opened	Closed
Egypt	Romani area	27.4.1916	22.7.1916
	El Arish	21.12.1916	1.1917
Palestine	Rafah area	11.1.1917	10.3.1917
	Deir el Balah (Gaza)	25.3.1917	1.10.1917
	Beersheeba area	29.10.1917	7.11.1917
	Gaza area	10.11.1917	16.11.1917
	Rishon Le Zion area	18.11.1917	13.3.1918
	Jerusalem	14.3.1918	
	Jericho		10.5.1918
	Talaat ed Dam	11.5.1918	18.5.1918

Country	Location	Opened	Closed
Palestine	Bethlehem	19.5.1918	
	Jericho		14.7.1918
	Bethlehem	21.7.1918	10.8.1918
	Jerusalem	11.8.1918	
	Jericho area	25.8.1918	1.9.1918
Transjordan	Amman	30.9.1918	20.10.1918
Palestine	Bir Salem	11.1918	
	Rafa	22.12.1918	11.2.1919
Egypt	Kantara	3.1919	1.7.1919

8.1 The ANZAC Mounted Division - Headquarters

Romani area, Egypt

Period of use: April - 22 July 1916



A real photo postcard of the main supply depot at Kantara in April 1916. Kantara was used as the launching place for the attack on Romani in August 1916.



A Field Service Postcard addressed to New South Wales and cancelled by the British Field Post Office M.D. 1 cds dated the 21.5.1916 which was allocated to the Australian Mounted Division Headquarters in the Romani area in Egypt.

This is the earliest recorded usage of this datestamp

8.1 The ANZAC Mounted Division - Headquarters

El Arish, Egypt

Period of use: 21 December 1916 - Early January 1917

A real photo postcard of the main supply depot at Bir el Mazar near El Arish in December 1916.



Another photograph of the main supply depot at Bir el Mazar near El Arish in December 1916. There is no indication of what the "X" in the middle of the photo represents.

8.1 The ANZAC Mounted Division - Headquarters

Field Post Office D.M. 1 - Deir el Balah, Palestine

Period of use: 25 March - 1 October 1917

A.F.W. 3078.

ACTIVE SERVICE

4/10/17

This envelope must not be used for coin or valuables. It cannot be accepted for registration.

NOTE:—

Correspondence in this envelope need not be censored Regimentally. The contents are liable to examination at the Base.

The following Certificate must be signed by the writer:—

I certify on my honour that the contents of this envelope refer to nothing but private and family matters.

Signature } *Jack Wane*
Name only }

[Crown Copyright Reserved.]

[Several letters may be forwarded in this Cover, but these must be all from the same writer. The Cover should be addressed in such case to the Base Censor.]

Address:—

Miss. M. Gale
"Corunna"
Larrington Rd.
Waverley
Sydney
N.S.W.

An Honour Envelope addressed to New South Wales and cancelled by the scarce skeleton British Field Post Office D.M. 1 cds dated the 19.7.1917 when the headquarters was at Deir el Balah in Palestine. The Mounted Division was in training at Abasen after the appointment and reorganisation by General Edmund Allenby.

A.F.A. 2042.
114/Gen.No./5248.

12/10/17.

FIELD SERVICE POST CARD.

The address only to be written on this side. If anything else is added the post card will be destroyed.

Miss. M. Gale,
"Corunna"
Larrington Road,
Waverley
N.S.W. Sydney

[Crown Copyright Reserved.]

FIELD POST OFFICE
D.M. 1
22 AUG 17

A Field Service Postcard cancelled by the British Field Post Office D.M. 1 cds dated the 22.8.1917 when the headquarters was located at Deir el Balah.

8.1 The ANZAC Mounted Division - Headquarters

Field Post Office D.M. 1 - Beersheeba, Palestine

Period of use: 29 October - 7 November 1917



A Field Service Postcard addressed to New South Wales and cancelled by the British Field Post Office D.M. 1 cds dated the 10.11.1917.

Note: The reverse of this rare card is dated the 6.11 when the Australian Mounted Division Headquarters was at Beersheeba after the great charge by the Light Horse.

Field Post Office D.M. 1 - Rishon Le Zion area, Palestine

Period of use: 18 November 1917 - 13 March 1918



An envelope addressed to New South Wales and cancelled by the British Field Post Office D.M. 1 cds dated the 24.11.1917 when the headquarters was in the Rishon Le Zion area in Palestine.

Note: The Mounted Division Headquarters was located at Yazur, east of Jaffa during the advance which contributed to the occupation of Jerusalem on the 9.12.

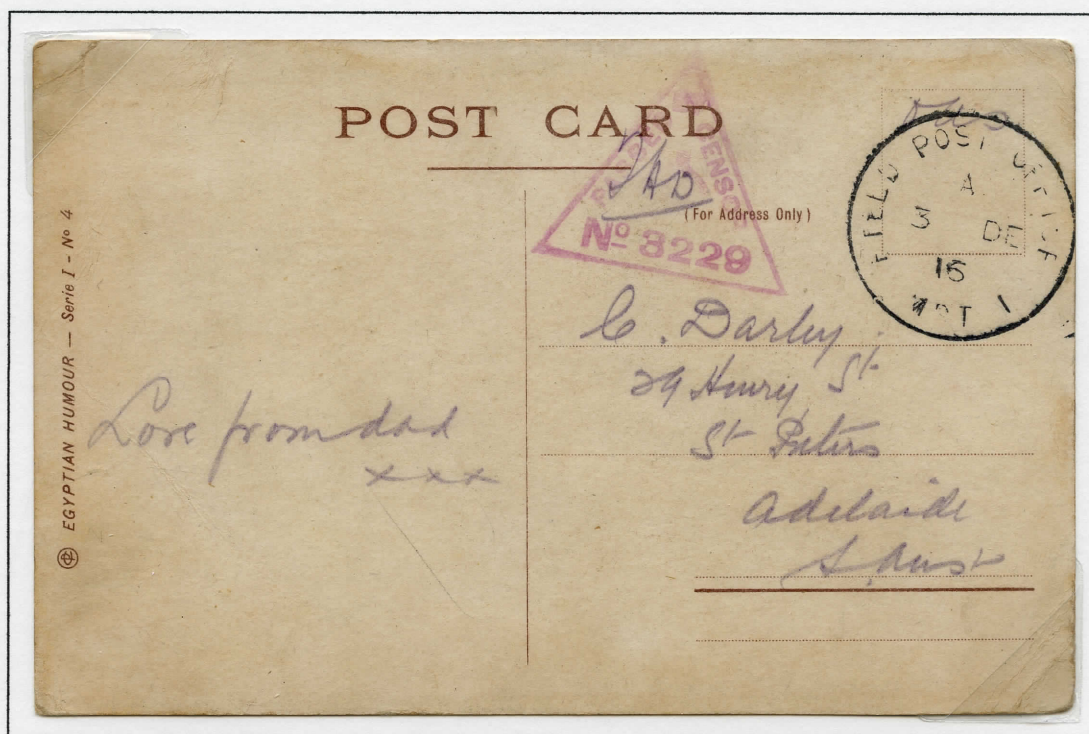
8.2 Divisional Remount and Training Depot

Although most texts on this subject refer to this unit as being the Train Division, it was primarily comprised of the Divisional Remount unit which supplied and provided care for the horses. There were three types of the British "FIELD POST OFFICE/ T.M. 1" datestamp used by the Remount Depot for the Australian Mounted Division. Their usage is detailed from the following locations listed in the table below:

Country	Location	Opened	Closed
Egypt	Kantara	11.1916	19.5.1917
	Moascar	20.5.1917	22.7.1918
Palestine	Jericho	9.1918	27.12.198
Egypt	Moascar	9.2.199	22.7.1919

Field Post Office MDT 1 - Kantara, Egypt

Period of use: November 1916 - 19 May 1917



A postcard addressed to South Australia and cancelled by the Field post office MDT 1 cds dated the 3.12.1916.

Note: The card was written by Major Darley of the 9th Light Horse Regiment who was awarded an Order of the British Empire for his services in the campaign in 1920.

8.2 Divisional Remount and Training Depot

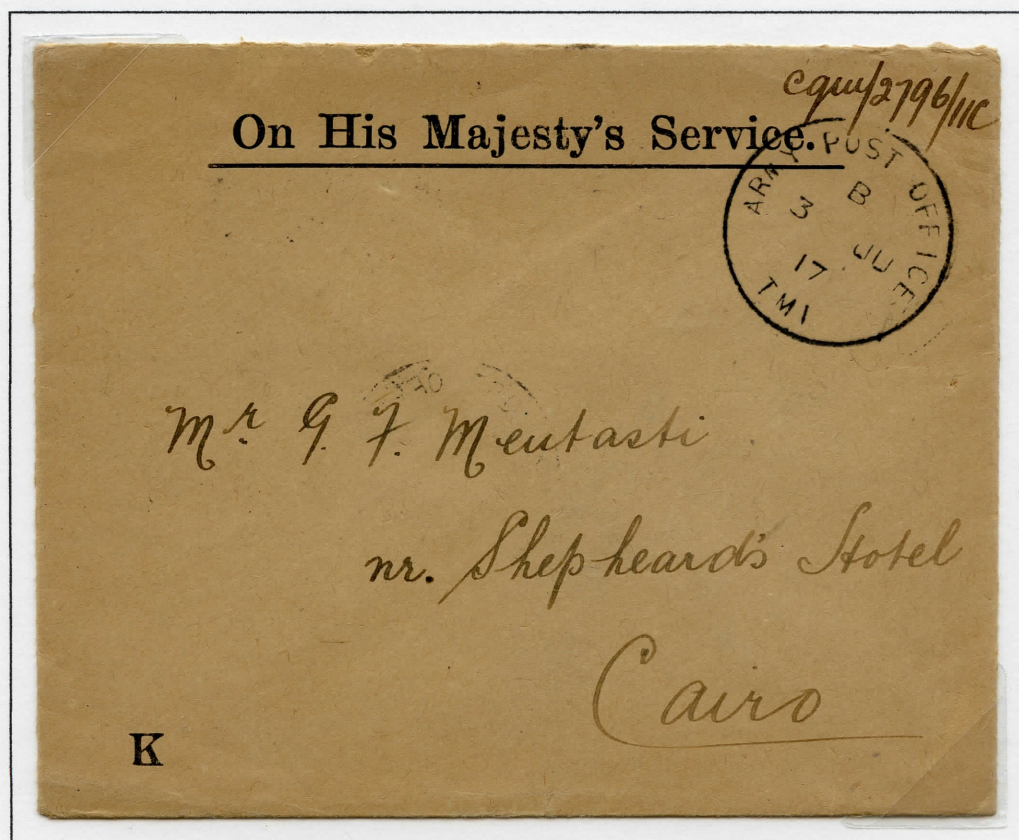
Field Post Office T.M. 1 - Moascar, Egypt

Period of use: 20 May 1917 - 22 July 1918



An envelope addressed to New South Wales and cancelled by the British Field Post Office TM 1 datestamp of the 8.4.1918.

This cds was used when the Remount Unit was stationed at Moascar, Egypt. At the lower left is the British type censor "PASSED/BY/CENSOR/3485" in black.



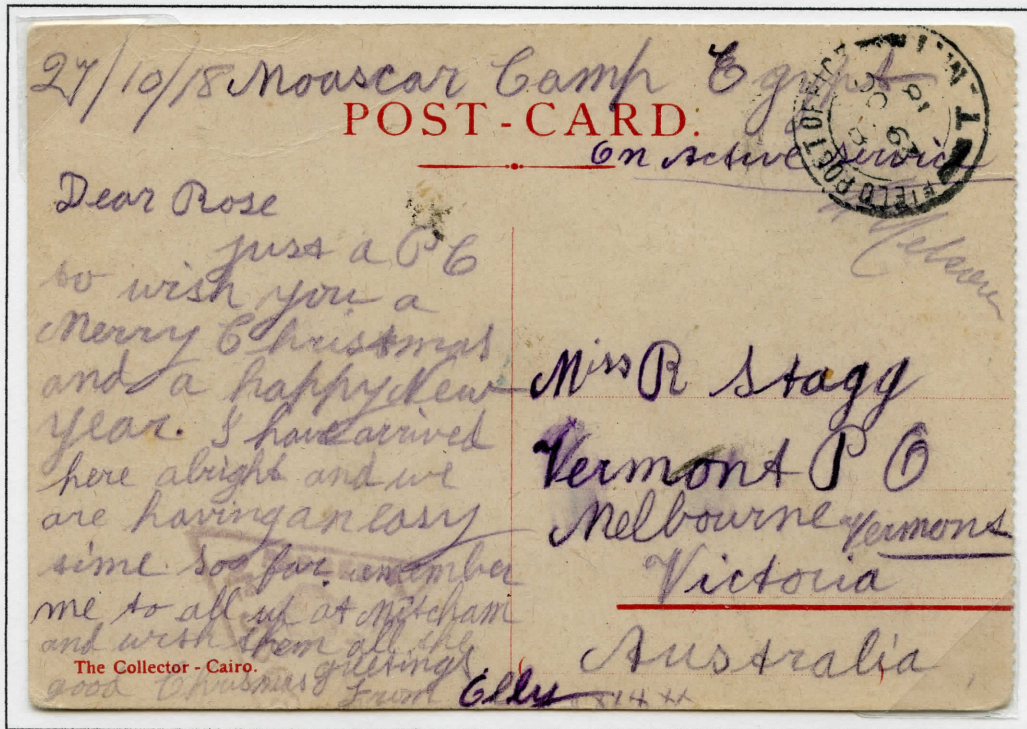
An envelope addressed to Cairo and cancelled by the British Field Post Office TM 1 datestamp of the 3.6.1917.

This cds was used when the Remount Unit was stationed at Moascar, Egypt.

8.2 Divisional Remount and Training Depot

Field Post Office T.M. 1 - Jericho, Palestine

Period of use: September - 27 December 1918



A postcard headed "Moascar Camp" and cancelled by the British Field Post Office TM 1 cds dated the 19.10.1918. This datestamp was used when the Remount unit was stationed at Jericho, Palestine.



A rare British Registration Envelope with an AIF Registration label at the upper left initialled "TM 1" and cancelled by the British Field Post Office TM 1 cds dated December 1918.